

ACTION: Notice of Availability of an Environmental Assessment

SUMMARY: Notice is hereby given that the Rural Utilities Service (RUS), as required by the National Environmental Policy Act is issuing an environmental assessment (EA) in connection with possible impacts related to a project proposed by Central Electric Power Cooperative (Central). The project consists of rebuilding a 69kV transmission line in Callaway, Audrain and Monroe Counties, Missouri. Central has submitted an application to the RUS for funding of the proposal.

FOR FURTHER INFORMATION CONTACT: Marcus Brundage, Environmental Protection Specialist, USDA Rural Development, Rural Utilities Service, 1400 Independence Ave. SW, Washington, DC 20250-1548, email Marcus.Brundage@usda.gov.

Central proposes to rebuild approximately 33.55 miles of 69kV line in existing transmission line right-of-way to replace cumulative damage to wood poles and metal components to four existing 69 kV lines. The line's route would remain in existing utility right-of-way, beginning at the Kingdom City Line Tap and covering line sections that connect with the Auxvasse, Salt River and Mexico Substations before ending at the Santa Fe Substation. The line would remain sited in Callaway, Audrain and Monroe Counties, MO. Central prepared an environmental assessment for RUS that describes the project, assesses the proposed project's environmental impacts, and summarizes as applicable any mitigation measures used to minimize environmental effects. RUS has conducted an independent evaluation of the environmental assessment and believes that it accurately assesses the impacts of the proposed project. No significant impacts are expected as a result of the construction of the project.

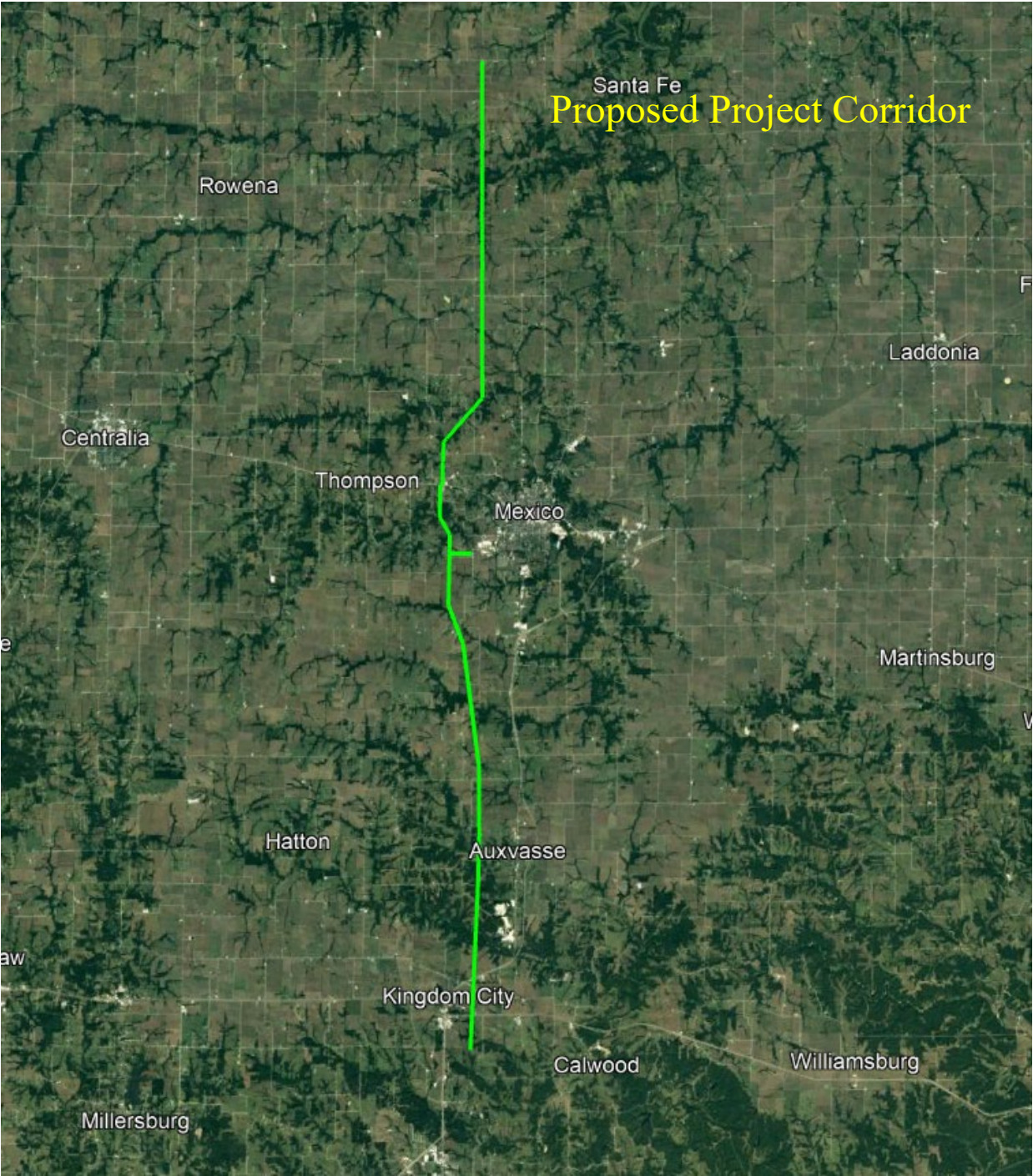
Written questions and comments should be emailed to RUS at the email address provided above. RUS will accept questions and comments on the environmental assessment for 14 days from the first date of publication of this notice. Due to COVID-19, no hard copy comments will be accepted. All comments must be provided electronically.

Copies of the Environmental Assessment and supporting documentation will be available for public review at:

<https://www.rd.usda.gov/resources/environmental-studies/assessments>

Any final action by RUS related to the proposed project will be subject to, and contingent upon, compliance with all relevant Federal environmental laws and regulations and completion of environmental review procedures as prescribed by 7 CFR Part 1970, Environmental Policies and Procedures.

A general location map of the proposal is shown below.



Santa Fe
Proposed Project Corridor

Rowena

Centralia

Thompson

Mexico

Laddonia

Martinsburg

Hatton

Auxvasse

Kingdom City

Calwood

Williamsburg

Millersburg