

## **Appendix H:**

### **Index of Public and Agency Comments by Source and Date**

Item Code	Commenter's Last Name	Commenter's First Name (s)	Individual, Business, Agency, NGO, Tribe	Date Comments Received
<b>Individual</b>				
I-001	Shuler Hamlet	Stephanie		22-Oct-2010
I-002	Archer	Elizabeth		19-Oct-2010
I-003	Bye	Clifford		17-Oct-2010
I-004	Shuler-Rodin	Donna		20-Oct-2010
I-005	Filzen	Tracey		22-Oct-2010
I-006	Foss	Richard		18-Oct-2010
I-007	Johnson	Sandra		29-Sept-2010
I-008	Jones	Burness Edwards		28-Oct-2010
I-009	Leland	Cheves		29-Sept-2010
I-010	Lyday	Jay		26-Oct-2010
I-011	Filzen	Alicia		21-Oct-2010
I-012	Mancill	Richard E.	Mancill, Inc	27-Oct-2010
I-013**	Ransom	Linda	Midway Nursery, Inc	20-Sept-2010
I-014	Rodin	Mike	Jacobs Engineering	29-Sept-2010
I-015	Whitley	Jerry	JW Consulting LLC	6-Oct-2010
I-016	Shuler	David		29-Sept-2010
I-017	Shuler	David		29-Sept-2010
I-018	Shuler	David		6-Oct-2010
I-019	Shuler	Merideth		20-Oct-2010
I-020	Stoney	S.David	Kitchen Table Climate Study Group	29-Sept-2010
I-021	Sutler	Neal M.		18-Oct-2010
I-022	Swenson	M.P.		19-Oct-2010
I-023	Swenson	M.P.		29-Sept-2010
I-024	Thornhill	Gary		30-Sept-2010
I-025	Watson	Anne Knight		29-Sept-2010
I-026	Wearing	Sam & Gwen		29-Sept-2010
I-027	Sisson	John H.		29-Oct-2010
I-028	Anonymous 1			29-Sept-2010
I-029	Anonymous 2			29-Sept-2010
I-030	Anonymous 3			29-Sept-2010
I-031	Anonymous 4			29-Sept-2010
I-032	Anonymous 5			29-Sept-2010
I-033	Anonymous 6			29-Sept-2010

I-034	Anonymous 7			29-Sept-2010
I-035	Anonymous 8			29-Sept-2010
I-036	Sutton	Orlando		29-Sept-2010
I-037	Prevost	Virginia		29-Sept-2010
I-038	Shuler	Hubert		29-Sept-2010
I-039	Shuler	David		29-Sept-2010
I-040	Shuler-Rodin	Donna		29-Sept-2010
I-041	Gaskins	Lawtonette		29-Sept-2010
I-042	Bye	Clifford		29-Sept-2010
I-043	Brubaker	John		27-Oct-2010
I-044			Coastal Observer	29-Sept-2010
I-045	Gaskins	Lawtonette S.		29-Sept-2010
I-046	Hamlet	J.		29-Sept-2010
I-047	Hamlet	Johnnie		29-Sept-2010
I-048	Shuler Hamlet	Stephanie		29-Sept-2010
I-049	Jacobs	Brett		29-Sept-2010
I-050	Jacobs	Kellie		29-Sept-2010
I-051	Jones Sr.	Bryce B.		29-Sept-2010
I-052	Jones	Burness Edward		29-Sept-2010
I-053	Pinckney	Thomas		28-Oct-2010
I-054	Jones	Clyde & Wilma		29-Sept-2010
I-055	Jones	Curtis		29-Sept-2010
I-056	Jones	Dorothy		29-Sept-2010
I-057	Lewin	Melinda		29-Sept-2010
I-058	May	Titus		29-Sept-2010
I-059	Nole Jr.	Albert		29-Sept-2010
I-060	Nole Sr.	Albert		29-Sept-2010
I-061	Nole	Otis E.		29-Sept-2010
I-062	Pinckney	Thomas		29-Sept-2010
I-063	Prevost	Michael	White Oak Forestry Corporation	29-Sept-2010
I-064	Prevost	Virginia		29-Sept-2010
I-065	Rodin	Michael E.		29-Sept-2010
I-066	Rodin	Michael Lawton		29-Sept-2010
I-067	Rutledge	Donald T.	Hampton, Inc.	29-Oct-2010
I-068	Shuler	Mabel P.		29-Sept-2010
I-069	Singleton	James Bernard		29-Sept-2010
I-070	Singleton	Latisha		29-Sept-2010
I-071	Swenson	Trevor		29-Sept-2010
I-072			Petition	No date
I-073*	Morse	Julian		19-Dec-2010
I-074*	Hardwiche	Ed		8-Jan-2011
I-075*	Marshall	Nancy		14-Jan-2011
I-076*	Morse	Julian		9-Jan-2011

<i>I-077*</i>	<i>Prevost</i>	<i>Virginia</i>		<i>13-Jan-2011</i>
<i>I-078*</i>	<i>Sisson</i>	<i>Regana C.</i>		<i>14-Jan-2011</i>
<i>I-079*</i>	<i>Sisson</i>	<i>Regana C.</i>		<i>14-Jan-2011</i>
<b>Non Government Organization (N)</b>				
N-001	Fulcher	James E.	Santee Preservation Society	29-Oct-2010
N-002	Parks	Kate	Coastal Conservation League	25-Oct-2010
<i>N-003*</i>	<i>Brubaker</i>	<i>John</i>	<i>SC Native Plant Society</i>	<i>10-Dec-2010</i>
<i>N-004*</i>	<i>Hanna</i>	<i>Dane</i>	<i>Palmetto Conservation</i>	<i>14-Jan-2011</i>
<i>N-005*</i>	<i>Parks</i>	<i>Kate</i>	<i>Coastal Conservation League</i>	<i>13-Jan-2011</i>
<i>N-006 *</i>	<i>Grant</i>	<i>Reeves</i>	<i>Bulls Bay Overlook Community Association, Inc</i>	<i>14-Jan-2011</i>
<b>Federal (F), State (S), and Local (L) Agencies</b>				
F-001	Herrington	Jay B.	Fish and Wildlife Service	28-Oct-2010
F-002	Bradley	Paul	USFS – Francis Marion and Sumter National Forests	14-Oct-2010
F-003	Youngman	Holland	Charleston District - USCOE	27-Oct-2010
S-004	Davis	Susan	SC Department of Natural Resources	27-Oct-2010
<i>F-005*</i>	<i>Dawsey</i>	<i>Sarah</i>	<i>Fish and Wildlife Service – Cape Romain NWR</i>	<i>3-Jan-2011</i>
<i>L-006*</i>	<i>Evans</i>	<i>Joel</i>	<i>Charleston County Planning Department</i>	<i>4-Jan-2011</i>
<i>S-007*</i>	<i>Holt</i>	<i>Ron</i>	<i>SC Forestry Commission</i>	<i>6-Jan-2011</i>
<i>F-008*</i>	<i>Herrington</i>	<i>Jay B.</i>	<i>Fish and Wildlife Service</i>	<i>10-Jan-2011</i>
<i>S-009*</i>	<i>Davis</i>	<i>Susan F.</i>	<i>SC Department of Natural</i>	<i>13-Jan-2011</i>



			<i>Resources</i>	
<i>S-010*</i>	<i>Barnes, PhD</i>	<i>Jodi</i>	<i>SC Department of Archives and History</i>	<i>12-January-2011</i>

\*Italicized comments indicate those received during the extended scoping period.

\*\*Indicates an information request.

## **Appendix I:**

### **Index of Public and Agency Comments by Category**

<b>Category: Biological Resources (45 records)</b>	
<b>Code</b>	<b>Item name</b>
I-023-006	Swenson, M.P.
I-004-002	Shuler-Rodin, Donna
I-020-003	Stoney, S. David
I-016-003	Shuler, David
I-008-004	Jones, Burness Edwards
I-007-001	Johnson, Sarah
I-006-003	Foss, Richard
I-026-006	Wearing, Sam & Gwen
I-027-003	Sisson, John
I-028-006	Anonymous 1
I-029-006	Anonymous 2
I-030-006	Anonymous 3
I-031-005	Anonymous 4
I-032-006	Anonymous 5
I-033-006	Anonymous 6
I-034-004	Anonymous 7
I-043-005	Brubaker, John A.
I-043-014	Brubaker, John A.
I-045-005	Gaskins, Lawtonette S.
I-046-005	Hamlet, J.
I-047-006	Hamlet, Johnnie
I-048-006	Shuler Hamlet, Stephanie
I-049-006	Jacobs, Brett
I-050-006	Jacobs, Kellie
I-051-006	Jones Sr., Bryce B.
I-052-004	Jones, Burness Edward
I-052-008	Jones, Burness Edward
I-053-003	Pinckney, Thomas
I-054-002	Jones, Clyde & Wilma
I-057-006	Lewin, Melinda
I-058-006	May, Titus
I-059-005	Nole Jr., Albert
I-060-003	Nole Sr, Albert
I-061-005	Nole, Otis E.
I-062-003	Pinckney, Thomas
I-063-004	Prevost, Michael
I-064-004	Prevost, Virginia
I-066-006	Rodin, Michael Lawton
I-068-006	Shuler, Mabel

I-069-006	Singleton, James Bernard
I-070-006	Singleton, Latisha
I-071-006	Swenson, Trevor E.
I-071-009	Swenson, Trevor E.
N-002-004	Coastal Conservation League
<i>N-003-006*</i>	<i>SC Native Plant Society</i>

<b>Category: Construction (6 records)</b>	
<b>Code</b>	<b>Item Name</b>
I-020-004	Stoney, S. David
N-002-007	Coastal Conservation League
S-004-005	SC Department of Natural Resources
<i>N-004-003*</i>	<i>Palmetto Construction</i>
<i>N-006-004*</i>	<i>Bulls Bay Overlook Community Association</i>
<i>S-007-003*</i>	<i>SC Forestry Commission</i>

<b>Category: Cultural and Historic Resources (59 records)</b>	
<b>Code</b>	<b>Item Name</b>
I-023-007	Swenson, M.P.
I-022-009	Swenson, M.P.
I-012-003	Mancill, Richard
I-012-005	Mancill, Richard E.
I-011-008	Filzen, Alicia
I-009-005	Cheves, Leland
I-006-004	Foss, Richard
I-005-007	Filzen, Tracey
I-004-005	Shuler-Rodin, Donna
I-001-005	Shuler Hamlet, Stephanie
I-026-007	Wearing, Sam & Gwen
I-028-007	Anonymous 1
I-029-007	Anonymous 2
I-030-007	Anonymous 3
I-031-006	Anonymous 4
I-031-007	Anonymous 4
I-032-007	Anonymous 5
I-033-007	Anonymous 6
I-034-005	Anonymous 7
I-035-005	Anonymous 8
I-037-002	Prevost, Virginia
I-043-015	Brubaker, John A.
I-044-004	Coastal Observer
I-045-006	Gaskins, Lawtonette S.
I-046-006	Hamlet, J.

I-047-007	Hamlet, Johnnie
I-048-007	Shuler Hamlet, Stephanie
I-048-010	Shuler Hamlet, Stephanie
I-049-008	Jacobs, Brett
I-050-007	Jacobs, Kellie
I-051-007	Jones Sr., Bryce B.
I-052-005	Jones, Burness Edward
I-053-004	Pinckney, Thomas
I-057-007	Lewin, Melinda
I-058-007	May, Titus
I-059-005	Nole Jr., Albert
I-060-004	Nole Sr., Albert
I-061-006	Nole, Otis E.
I-062-004	Pinckney, Thomas
I-062-005	Pinckney, Thomas
I-062-007	Pinckney, Thomas
I-063-005	Prevost, Michael
I-063-007	Prevost, Michael
I-064-005	Prevost, Virginia
I-066-007	Rodin, Michael Lawton
I-066-014	Rodin, Michael Lawton
I-067-002	Rutledge, Donald T.
I-067-008	Rutledge, Donald T.
I-067-009	Rutledge, Donald T.
I-067-012	Rutledge, Donald T.
I-068-007	Shuler, Mabel
I-068-010	Shuler, Mabel
I-068-011	Shuler, Mabel
I-069-007	James Bernard Singleton
I-070-007	Singleton, Latisha
I-071-007	Swenson, Trevor
N-002-024	Coastal Conservation League
<i>N-003-007*</i>	<i>SC Native Plant Society</i>
<i>I-076-009*</i>	<i>Morse, Julian N.</i>

<b>Category: Data Correction/Submittal (9 records)</b>	
<b>Code</b>	<b>Item Name</b>
I-024-001	Thornhill, Gary
I-016-006	Shuler, David
I-043-024	Brubaker, John
I-063-005	Prevost, Michael
I-063-009	Prevost, Michael
F-001-005	Fish and Wildlife Service
F-002-004	USFS – Francis Marion and Sumter National

	Forests
<i>F-008-006*</i>	<i>Fish and Wildlife Service</i>
<i>N-003-012*</i>	<i>SC Native Plant Society</i>

<b>Category: Human Health and Safety (49 records)</b>	
<b>Code</b>	<b>Item Name</b>
I-023-008	Swenson, M.P.
I-007-002	Johnson, Sarah
I-004-011	Shuler-Rodin, Donna
I-026-008	Wearing, Sam & Gwen
I-028-008	Anonymous 1
I-029-008	Anonymous 2
I-030-008	Anonymous 3
I-032-008	Anonymous 5
I-033-008	Anonymous 6
I-045-007	Gaskins, Lawtonette S.
I-045-009	Gaskins, Lawtonette S.
I-046-007	Hamlet, J.
I-047-008	Hamlet, Johnnie
I-048-008	Shuler Hamlet, Stephanie
I-048-009	Shuler Hamlet, Stephanie
I-048-012	Shuler Hamlet, Stephanie
I-049-009	Jacobs, Brett
I-049-012	Jacobs, Brett
I-050-008	Jacobs, Kellie
I-050-013	Jacobs, Kellie
I-051-008	Jones Sr., Bryce B.
I-052-006	Jones, Burness Edward
I-052-008	Jones, Burness Edward
I-054-003	Jones, Clyde & Wilma
I-054-004	Jones, Clyde & Wilma
I-055-002	Jones, Curtis
I-055-004	Jones, Curtis
I-056-002	Jones, Dorothy V.
I-056-003	Jones, Dorothy V.
I-057-008	Lewin, Melinda
I-057-009	Lewin, Melinda
I-057-011	Lewin, Melinda
I-058-008	May, Titus
I-059-007	Nole Jr., Albert
I-065-004	Rodin, Michael E.
I-066-008	Rodin, Michael Lawton
I-066-015	Rodin, Michael Lawton
I-068-008	Shuler, Mabel P.

I-068-013	Shuler, Mabel P.
I-069-008	Singleton, James Bernard
I-069-010	Singleton, James Bernard
I-070-008	Singleton, Latisha
I-070-010	Singleton, Latisha
I-070-011	Singleton, Latisha
I-071-008	Swenson, Trevor
N-001-011	Santee Preservation Society
I-001-003	Shuler Hamlet, Stephanie
I-022-015	Swenson, M.P.
<i>N-006-005*</i>	<i>Bulls Bay Overlook Community Association, Inc.</i>

<b>Category: Land Rights (13 records)</b>	
<b>Code</b>	<b>Item Name</b>
I-003-007	Bye, Clifford
I-012-006	Mancill, Richard E.
I-044-006	Coastal Observer
I-045-010	Gaskins, Lawtonette
I-049-012	Jacobs, Brett
I-064-006	Prevost, Virginia
I-067-003	Rutledge, Donald T.
N-002-029	Coastal Conservation League
F-002-002	USFS – Francis Marion and Sumter National Forests
S-004-016	SC Department of Natural Resources
<i>N-006-003*</i>	<i>Bulls Bay Overlook Community Association, Inc.</i>
<i>F-005-001*</i>	<i>Fish and Wildlife Service – Cape Romain NWR</i>
<i>L-006-001*</i>	<i>Charleston County Planning Department</i>

<b>Category: Land Use (68 records)</b>	
<b>Code</b>	<b>Item Name</b>
I-027-004	Sisson, John
I-023-004	Swenson, M.P.
I-018-006	Shuler, David
I-012-002	Mancill, Richard
I-011-009	Filzen, Alicia
I-008-003	Jones, Burness Edward
I-005-005	Filzen, Tracey
I-003-001	Bye, Clifford
I-026-004	Wearing, Sam & Gwen
I-016-002	Shuler, David

I-016-004	Shuler, David
I-016-005	Shuler, David
I-024-002	Thornhill, Gary
I-028-004	Anonymous 1
I-029-004	Anonymous 2
I-030-004	Anonymous 3
I-031-003	Anonymous 4
I-032-004	Anonymous 5
I-032-009	Anonymous 5
I-033-004	Anonymous 6
I-033-009	Anonymous 6
I-034-003	Anonymous 7
I-034-006	Anonymous 8
I-038-002	Shuler, Hubert
I-040-002	Shuler-Rodin, Donna
I-042-002	Bye, Clifford
I-043-003	Brubaker, John
I-044-003	Coastal Observer
I-044-005	Coastal Observer
I-044-007	Coastal Observer
I-045-003	Gaskins, Lawtonette S.
I-045-008	Gaskins, Lawtonette S.
I-046-003	Hamlet, J.
I-046-008	Hamlet, J.
I-046-004	Hamlet, Johnnie
I-048-011	Hamlet, Johnnie
I-048-004	Shuler Hamlet, Stephanie
I-049-005	Jacobs, Brett
I-050-004	Jacobs, Kellie
I-051-004	Jones Sr., Bryce B.
I-052-003	Jones, Burness Edward
I-057-004	Lewin, Melinda
I-058-004	May, Titus
I-059-004	Nole Jr., Albert
I-059-008	Nole Jr., Albert
I-060-002	Nole Sr., Albert
I-060-006	Nole Sr., Albert
I-060-007	Nole Sr., Albert
I-061-003	Nole, Otis E.
I-061-008	Nole, Otis E.
I-063-002	Prevost, Michael
I-064-002	Prevost, Virginia
I-065-003	Rodin, Michael E.
I-066-004	Rodin, Michael Lawton
I-066-010	Rodin, Michael Lawton



I-067-007	Rutledge, Donald T.
I-068-004	Shuler, Mabel P.
I-068-009	Shuler, Mabel P.
I-069-004	Singleton, James Bernard
I-070-004	Singleton, Latisha
I-070-004	Swenson, Trevor E.
N-002-005	Coastal Conservation League
<i>I-076-005*</i>	<i>Morse, Julian N.</i>
<i>I-076-008*</i>	<i>Morse, Julian N.</i>
<i>I-076-011*</i>	<i>Morse, Julian N.</i>

<b>Category: NEPA Process (30 records)</b>	
<b>Code</b>	<b>Item Name</b>
I-017-002	Shuler, David
I-018-008	Shuler, David
I-018-010	Shuler, David
I-018-011	Shuler, David
I-016-009	Shuler, David
I-036-001	Sutton, Orlando
I-039-002	Shuler, David
I-043-017	Brubaker, John A.
N-001-001	Santee Preservation Society
N-002-003	Coastal Conservation League
N-002-009	Coastal Conservation League
N-002-011	Coastal Conservation League
N-002-014	Coastal Conservation League
N-002-016	Coastal Conservation League
N-002-027	Coastal Conservation League
F-001-009	Fish and Wildlife Service
F-002-001	USFS – Francis Marion and Sumter National Forests
F-002-006	USFS – Francis Marion and Sumter National Forests
F-003-002	Charleston District – US Corps of Engineers
S-004-010	SC Department of Natural Resources
S-004-013	SC Department of Natural Resources
S-004-017	SC Department of Natural Resources
S-004-018	SC Department of Natural Resources
S-004-019	SC Department of Natural Resources
<i>N-003-005*</i>	<i>SC Native Plant Society</i>
<i>S-007-001*</i>	<i>SC Forestry Commission</i>
<i>F-008-009*</i>	<i>Fish and Wildlife Service</i>
<i>I-076-013*</i>	<i>Morse, Julian N.</i>
<i>I-076-015*</i>	<i>Morse, Julian N.</i>

I-077-002*	Prevost, Virginia
------------	-------------------

<b>Category: Project Alternatives (32 records)</b>	
<b>Code</b>	<b>Item Name</b>
I-001-001	Shuler Hamlet, Stephanie
I-002-004	Archer, Elizabeth M.
I-010-003	Lyday, Jay
I-011-011	Filzen, Alicia
I-022-013	Swenson, M.P.
I-023-009	Swenson, M.P.
I-025-002	Watson, Anne Knight
I-025-005	Watson, Anne Knight
I-027-001	Sisson, John H.
I-018-001	Shuler, David
I-043-009	Brubaker, John
I-043-013	Brubaker, John
I-043-020	Brubaker, John
I-043-021	Brubaker, John
I-051-009	Jones Sr., Bryce B.
I-052-010	Jones, Burness Edward
I-053-001	Pinckney, Thomas
I-064-007	Prevost, Virginia
I-066-019	Rodin, Michael Lawton
N-001-004	Santee Preservation Society
N-002-002	Coastal Conservation League
N-002-010	Coastal Conservation League
N-002-035	Coastal Conservation League
F-002-005	USFS – Francis Marion and Sumter National Forests
S-004-011	SC Department of Natural Resources
N-003-001*	SC Native Plant Society
N-003-003*	SC Native Plant Society
N-003-011*	SC Native Plant Society
N-004-001*	Palmetto Conservation
N-006-006*	Bulls Bay Overlook Community Association, Inc.
N-006-007*	Bulls Bay Overlook Community Association, Inc.
F-005-003*	Fish and Wildlife Service- Cape Romain NWR

<b>Category: Proximity to Residence (58 records)</b>	
<b>Code</b>	<b>Item Name</b>
I-023-003	Swenson, M.P.

I-018-002	Shuler, David
I-022-003	Swenson, Squeaky
I-011-001	Filzen, Alicia
I-010-002	Lyday, Jay
I-006-002	Foss, Richard
I-005-001	Filzen, Tracey
I-004-003	Shuler-Rodin, Donna
I-003-005	Bye, Clifford
I-002-002	Archer, Elizabeth M.
I-001-002	Shuler Hamlet, Stephanie
I-026-003	Wearing, Sam & Gwen
I-028-003	Anonymous 1
I-029-003	Anonymous 2
I-030-003	Anonymous 3
I-032-003	Anonymous 5
I-033-003	Anonymous 6
I-034-002	Anonymous 7
I-035-003	Anonymous 8
I-038-001	Shuler, Hubert
I-045-002	Gaskins, Lawtonette S.
I-046-002	Hamlet, J.
I-047-003	Hamlet, Johnnie
I-047-003	Hamlet, Johnnie
I-048-003	Shuler Hamlet, Stephanie
I-048-011	Shuler Hamlet, Stephanie
I-048-004	Jacobs, Brett
I-048-010	Jacobs, Brett
I-048-013	Jacobs, Brett
I-050-003	Jacobs, Kellie
I-050-009	Jacobs, Kellie
I-050-013	Jacobs, Kellie
I-050-003	Jones Sr., Bryce B.
I-051-011	Jones Sr., Bryce B.
I-052-002	Jones, Burness Edward
I-052-007	Jones, Burness Edward
I-054-001	Jones, Clyde & Wilma
I-055-001	Jones, Curtis
I-055-004	Jones, Curtis
I-056-001	Jones, Dorothy B.
I-057-003	Lewin, Melinda
I-057-003	May, Titus

I-057-010	May, Titus
I-062-002	Pinckney, Thomas
I-062-006	Pinckney, Thomas
I-065-002	Rodin, Michael E.
I-065-005	Rodin, Michael E.
I-066-003	Rodin, Michael Lawton
I-066-009	Rodin, Michael Lawton
I-068-003	Shuler, Mabel P.
I-069-003	Singleton, James Bernard
I-069-009	Singleton, James Bernard
I-069-012	Singleton, James Bernard
I-070-003	Singleton, Latisha
I-070-009	Singleton, Latisha
I-070-012	Singleton, Latisha
I-071-003	Swenson, Trevor E.
<i>I-076-002*</i>	<i>Morse, Julian N.</i>

<b>Category: Public Involvement Process (36 records)</b>	
<b>Code</b>	<b>Item Name</b>
I-023-010	Swenson, M.P.
I-022-002	Swenson, M.P.
I-018-007	Shuler, David
I-026-010	Wearing, Sam & Gwen
I-028-010	Anonymous 1
I-029-009	Anonymous 2
I-030-010	Anonymous 3
I-031-008	Anonymous 4
I-032-010	Anonymous 5
I-034-006	Anonymous 7
I-035-007	Anonymous 8
I-043-012	Brubaker, John A.
I-044-008	Coastal Observer
I-045-011	Gaskins, Lawtonette S.
I-046-009	Hamlet, J.
I-047-012	Hamlet, Johnnie
I-048-013	Shuler Hamlet, Stephanie
I-049-015	Jacobs, Brett
I-050-015	Jacobs, Kellie
I-057-014	Lewin, Melinda
I-059-009	Nole Jr., Albert
I-060-008	Nole Sr., Albert
I-061-009	Nole, Otis E.
I-067-013	Rutledge, Donald T.

I-068-014	Shuler, Mabel P.
I-069-013	Singleton, James Bernard
I-070-013	Singleton, Latisha
I-071-012	Swenson, Trevor E.
I-007-003	Johnson, Sandra
I-009-007	Leland, Cheves
N-002-001	Coastal Conservation League
<i>I-073-001*</i>	<i>Morse, Julian</i>
<i>I-074-001*</i>	<i>Hardwiche, Ed</i>
<i>I-074-002*</i>	<i>Hardwiche, Ed</i>
<i>I-075-002*</i>	<i>Marshall, Nancy</i>
<i>I-076-014*</i>	<i>Morse, Julian N.</i>

<b>Category: Purpose and Need (52 records)</b>	
<b>Code</b>	<b>Item Name</b>
I-027-002	Sisson, John
I-020-001	Stoney, S. David
I-011-007	Filzen, Alicia
I-009-001	Cheves, Leland
I-005-004	Filzen, Tracey
I-004-001	Shuler-Rodin, Donna
I-004-009	Shuler-Rodin, Donna
I-002-003	Archer, Elizabeth M.
I-001-008	Shuler Hamlet, Stephanie
I-026-001	Wearing, Sam & Gwen
I-023-001	Swenson, M.P.
I-022-007	Swenson, M.P.
I-022-010	Swenson, M.P.
I-028-001	Anonymous 1
I-029-001	Anonymous 2
I-030-001	Anonymous 3
I-031-001	Anonymous 4
I-032-001	Anonymous 5
I-033-001	Anonymous 6
I-034-001	Anonymous 7
I-035-001	Anonymous 8
I-043-001	Brubaker, John A.
I-043-011	Brubaker, John A.
I-044-001	Coastal Observer
I-047-001	Hamlet, Johnnie
I-048-001	Shuler Hamlet, Stephanie
I-049-002	Jacobs, Brett
I-050-001	Jacobs, Kellie
I-051-001	Jones Sr., Bryce B

I-057-001	Lewin, Melinda
I-058-001	May, Titus
I-058-012	May, Titus
I-059-002	Nole Jr., Albert
I-061-001	Nole, Otis E.
I-064-001	Prevost, Virginia
I-064-009	Prevost, Virginia
I-064-010	Prevost, Virginia
I-065-001	Rodin, Michael E.
I-066-001	Rodin, Michael Lawton
I-066-018	Rodin, Michael Lawton
I-067-005	Rutledge, Donald T.
I-068-001	Shuler, Mabel P.
I-069-001	Singleton, James Bernard
I-070-001	Singleton, Latisha
I-071-001	Swenson, Trevor E.
I-072-001	Petition
N-001-006	Santee Preservation Society
F-001-010	Fish and Wildlife Service
S-004-014	SC Department of Natural Resources
S-004-015	SC Department of Natural Resources
<i>N-004-007*</i>	<i>Palmetto Conservation</i>
<i>F-008-001*</i>	<i>Fish and Wildlife Service</i>

<b>Recreation (5 records)</b>	
<b>Code</b>	<b>Item Name</b>
I-018-005	Shuler, David
I-035-006	Anonymous 8
N-002-025	Coastal Conservation League
S-004-009	SC Department of Natural Resources
<i>N-004-006*</i>	<i>Palmetto Conservation</i>

<b>Category: Route Alternatives (23 records)</b>	
<b>Code</b>	<b>Item Name</b>
I-005-011	Filzen, Tracey
I-009-006	Cheves, Leland
I-012-002	Mancill, Richard E.
I-012-004	Mancill, Richard E.
I-001-010	Shuler Hamlet, Stephanie
I-028-009	Anonymous 1
I-041-001	Gaskins, Lawtonette
I-040-003	Shuler-Rodin, Donna
I-042-001	Bye, Clifford

I-042-004	Bye, Clifford
I-043-022	Brubaker, John A.
I-051-009	Jones Sr., Bryce B.
I-052-010	Jones, Burness Edward
I-052-014	Jones, Burness Edward
I-052-016	Jones, Burness Edward
I-067-004	Rutledge, Donald T.
N-001-014	Santee Preservation Society
N-002-033	Coastal Conservation League
F-002-003	USFS – Francis Marion and Sumter National Forests
<i>I-076-001*</i>	<i>Morse, Julian N.</i>
<i>I-076-004*</i>	<i>Morse, Julian N.</i>
<i>I-076-010*</i>	<i>Morse, Julian N.</i>
<i>S-009-001*</i>	<i>SC Department of Natural Resources</i>

<b>Sub-Category: Belle Isle (4 records)</b>	
<b>Code</b>	<b>Item Name</b>
I-008-001	Jones, Burness Edward
I-063-010	Prevost, Michael
N-001-009	Santee Preservation Society
N-002-018	Coastal Conservation League

<b>Sub-Category: Britton Neck (2 records)</b>	
<b>Code</b>	<b>Item Name</b>
I-063-011	Prevost, Michael
N-002-017	Coastal Conservation League

<b><i>Sub-Category: Commonwealth (9 records)</i></b>	
<b><i>Code</i></b>	<b><i>Item Name</i></b>
<i>I-075-002*</i>	<i>Morse, Julian N.</i>
<i>N-003-002*</i>	<i>SC Native Plant Society</i>
<i>N-005-001*</i>	<i>Coastal Conservation League</i>
<i>N-005-002*</i>	<i>Coastal Conservation League</i>
<i>I-074-001*</i>	<i>Marshall, Nancy</i>
<i>I-075-003*</i>	<i>Morse, Julian N.</i>
<i>I-076-001*</i>	<i>Prevost, Virginia</i>
<i>I-077-001*</i>	<i>Sisson, Regina C.</i>
<i>S-009-002*</i>	<i>SC Department of Natural Resources</i>

<b>Sub-Category: Charity (10 records)</b>
---

<b>Code</b>	<b>Item Name</b>
I-002-001	Archer, Elizabeth
I-003-006	Bye, Clifford
I-003-008	Bye, Clifford
I-027-005	Sisson, John
I-042-001	Bye, Clifford
I-063-014	Prevost, Michael
N-001-015	Santee Preservation Society
N-001-016	Santee Preservation Society
N-002-034	Coastal Conservation League
<i>N-006-001*</i>	<i>Bulls Bay Overlook Community Association, Inc.</i>

<b>Sub-Category: Jamestown (19 records)</b>	
<b>Code</b>	<b>Item Name</b>
I-001-001	Shuler Hamlet, Stephanie
I-001-010	Shuler Hamlet, Stephanie
I-004-011	Shuler-Rodin, Donna
I-006-005	Foss, Richard
I-012-001	Mancill, Richard E.
I-019-001	Shuler, Merideth
I-022-001	Swenson, M.P.
I-029-010	Anonymous 2
I-032-011	Anonymous 5
I-034-007	Anonymous 7
I-040-001	Shuler-Rodin, Donna
I-049-001	Jacobs, Brett
I-050-016	Jacobs, Kellie
I-060-005	Nole Sr., Albert
I-061-007	Nole, Otis E.
I-063-013	Prevost, Michael
I-066-016	Rodin, Michael Lawton
N-002-031	Coastal Conservation League
<i>I-076-006*</i>	<i>Morse, Julian N.</i>

<b>Sub-Category: Honey Hill (4 records)</b>	
<b>Code</b>	<b>Item Name</b>
I-063-012	Prevost, Michael
N-001-012	Santee Preservation Society
N-002-032	Coastal Conservation League
<i>I-076-007*</i>	<i>Morse, Julian N.</i>



<b>Socioeconomic Resources (39 records)</b>	
<b>Code</b>	<b>Item Name</b>
I-001-006	Shuler Hamlet, Stephanie
I-001-007	Shuler Hamlet, Stephanie
I-004-004	Shuler-Rodin, Donna
I-004-010	Shuler-Rodin, Donna
I-005-008	Filzen, Tracey
I-005-010	Filzen, Tracey
I-017-001	Shuler, David
I-018-009	Shuler, David
I-016-010	Shuler, David
I-011-005	Filzen, Alicia
I-026-009	Wearing, Sam & Gwen
I-022-004	Swenson, Squeaky
I-022-006	Swenson, M.P.
I-022-014	Swenson, M.P.
I-033-010	Anonymous 6
I-037-001	Prevost, Virginia
I-039-001	Shuler, David
I-025-001	Watson, Anne Knight
I-043-010	Brubaker, John A.
I-043-016	Brubaker, John A.
I-043-023	Brubaker, John A.
I-051-013	Jones Sr., Bryce B.
I-052-012	Jones, Burness Edward
I-065-006	Rodin, Michael E.
I-065-007	Rodin, Michael E.
I-065-008	Rodin, Michael E.
I-066-011	Rodin, Michael Lawton
I-066-017	Rodin, Michael Lawton
I-068-012	Shuler, Mabel P.
N-001-002	Santee Preservation Society
N-001-005	Santee Preservation Society
N-002-006	Coastal Conservation League
N-002-008	Coastal Conservation League
S-004-012	SC Department of Natural Resources
<i>N-003-004*</i>	<i>SC Native Plant Society</i>
<i>N-006-010*</i>	<i>Bulls Bay Overlook Community Association, Inc.</i>
<i>N-006-011*</i>	<i>Bulls Bay Overlook Community Association, Inc.</i>
<i>N-006-012*</i>	<i>Bulls Bay Overlook Community Association,</i>

	<i>Inc.</i>
<i>I-076-012*</i>	<i>Morse, Julian N.</i>

<b>Threatened and Endangered Species (23 records)</b>	
<b>Code</b>	<b>Item Name</b>
I-004-006	Shuler-Rodin, Donna
I-005-003	Filzen, Tracey
I-008-002	Jones, Edward Burness
I-011-003	Filzen, Alicia
I-026-011	Wearing, Sam & Gwen
I-020-004	Stoney, S. David
I-016-008	Shuler, David
I-043-007	Brubaker, John A.
I-043-019	Brubaker, John A.
I-050-010	Jacobs, Kellie
I-057-012	Lewin, Melinda
I-066-013	Rodin, Michael Lawton
N-001-017	Santee Preservation Society
N-002-012	Coastal Conservation League
N-002-021	Coastal Conservation League
F-001-003	Fish and Wildlife Service
F-001-006	Fish and Wildlife Service
S-004-003	SC Department of Natural Resources
<i>N-003-010*</i>	<i>SC Native Plant Society</i>
<i>N-006-002*</i>	<i>Bulls Bay Overlook Community Association, Inc</i>
<i>S-007-006*</i>	<i>SC Forestry Commission</i>
<i>F-008-003*</i>	<i>Fish and Wildlife Service</i>
<i>F-008-005*</i>	<i>Fish and Wildlife Service</i>

<b>Category: Vegetation (22 records)</b>	
<b>Code</b>	<b>Item Name</b>
I-022-017	Swenson, M.P.
I-018-004	Shuler, David
I-011-006	Filzen, Alicia
I-005-006	Filzen, Tracey
I-001-004	Shuler Hamlet, Stephanie
I-025-002	Watson, Anne Knight
I-042-003	Bye, Clifford
I-009-006	Leland, Cheves

I-043-006	Brubaker, John A.
I-052-013	Jones, Burness Edward
N-002-015	Coastal Conservation League
N-002-020	Coastal Conservation League
N-002-026	Coastal Conservation League
N-002-028	Coastal Conservation League
F-001-001	Fish and Wildlife Service
S-004-001	SC Department of Natural Resources
S-004-006	SC Department of Natural Resources
<i>N-004-004*</i>	<i>Palmetto Conservation</i>
<i>N-006-008*</i>	<i>Bulls Bay Overlook Community Association, Inc.</i>
<i>S-007-005*</i>	<i>SC Forestry Commission</i>
<i>F-008-002*</i>	<i>Fish and Wildlife Service</i>
<i>F-008-008*</i>	<i>Fish and Wildlife Service</i>

<b>Category: Visual/Aesthetic Resources (49 records)</b>	
<b>Code</b>	<b>Item Name</b>
I-023-002	Swenson, M.P.
I-022-012	Swenson, Squeaky
I-020-002	Stoney, S. David
I-016-001	Shuler, David
I-009-002	Cheves, Leland
I-006-001	Foss, Richard
I-005-009	Filzen, Tracey
I-011-010	Filzen, Alicia
I-026-002	Wearing, Sam & Gwen
I-004-008	Shuler-Rodin, Donna
I-028-002	Anonymous 1
I-029-002	Anonymous 2
I-030-002	Anonymous 3
I-030-009	Anonymous 3
I-031-002	Anonymous 4
I-032-002	Anonymous 5
I-033-002	Anonymous 6
I-035-002	Anonymous 7
I-043-002	Brubaker, John A.
I-044-002	Coastal Observer
I-045-001	Gaskins, Lawtonette S.
I-046-001	Hamlet, J.
I-047-002	Hamlet, Johnnie
I-048-002	Shuler Hamlet, Stephanie
I-049-003	Jacobs, Brett

I-050-002	Jacobs, Kellie
I-051-002	Jones Sr., Bryce B.
I-052-001	Jones, Burness Edward
I-053-002	Pinckney, Thomas
I-057-002	Lewin, Melinda
I-058-002	May, Titus
I-059-003	Nole Jr., Albert
I-060-001	Nole Sr., Albert
I-061-002	Nole, Otis E.
I-062-001	Pinckney, Thomas
I-063-001	Prevost, Michael
I-066-002	Rodin, Michael Lawton
I-067-001	Rutledge, Donald T.
I-067-006	Rutledge, Donald T.
I-067-010	Rutledge, Donald T.
I-067-011	Rutledge, Donald T.
I-068-002	Shuler, Mabel P.
I-069-002	Singleton, James Bernard
I-070-002	Singleton, Latisha
I-071-002	Swenson, Trevor E.
N-001-003	Santee Preservation Society
N-002-023	Coastal Conservation League
S-004-008	SC Department of Natural Resources
<i>N-004-002*</i>	<i>Palmetto Conservation</i>

<b>Category: Water Resources and Wetlands (53 records)</b>	
<b>Code</b>	<b>Item Name</b>
I-005-002	Filzen, Tracey
I-009-003	Cheves, Leland
I-003-003	Bye, Clifford
I-003-004	Bye, Clifford
I-001-009	Shuler Hamlet, Stephanie
I-011-002	Filzen, Alicia
I-026-005	Wearing, Sam & Gwen
I-025-004	Watson, Anne Knight
I-023-005	Swenson, M.P.
I-022-011	Swenson, M.P.
I-028-005	Anonymous 1
I-029-005	Anonymous 2
I-030-005	Anonymous 3
I-031-004	Anonymous 4
I-032-005	Anonymous 5
I-033-005	Anonymous 6
I-035-004	Anonymous 8

I-043-004	Brubaker, John A.
I-043-008	Brubaker, John A.
I-043-018	Brubaker, John A.
I-045-004	Gaskins, Lawtonette S.
I-046-004	Hamlet, J.
I-047-005	Hamlet, Johnnie
I-048-005	Shuler Hamlet, Stephanie
I-049-006	Jacobs, Brett
I-050-005	Jacobs, Kellie
I-051-005	Jones Sr., Bryce
I-057-005	Lewin, Melinda
I-058-005	May, Titus
I-058-009	May, Titus
I-058-011	May, Titus
I-061-003	Nole, Otis E.
I-063-003	Prevost, Michael E.
I-064-003	Prevost, Virginia
I-066-005	Rodin, Michael Lawton
I-066-012	Rodin, Michael Lawton
I-068-005	Shuler, Mabel P.
I-069-005	Singleton, James Bernard
I-070-005	Singleton, Latisha
I-071-005	Swenson, Trevor E.
N-001-007	Santee Preservation Society
N-001-013	Santee Preservation Society
N-001-018	Santee Preservation Society
N-001-019	Santee Preservation Society
N-002-019	Coastal Conservation League
F-001-002	Fish and Wildlife Service
F-003-001	Charleston District – US Corps of Engineers
S-004-004	SC Department of Natural Resources
<i>N-003-008*</i>	<i>SC Native Plant Society</i>
<i>N-006-009*</i>	<i>Bulls Bay Overlook Community Association, Inc.</i>
<i>S-007-002*</i>	<i>SC Forestry Commission</i>
<i>S-007-004*</i>	<i>SC Forestry Commission</i>

<b>Category: Wildlife (31 records)</b>	
<b>Code</b>	<b>Item Name</b>
I-011-004	Filzen, Alicia
I-010-003	Lyday, Jay
I-009-004	Cheves, Leland
I-005-012	Filzen, Tracey
I-004-007	Shuler-Rodin, Donna

I-003-002	Bye, Clifford
I-018-003	Shuler, David
I-047-010	Hamlet, Johnnie
I-049-011	Jacobs, Brett
I-050-011	Jacobs, Kellie
I-052-009	Jones, Burness Edward
I-052-015	Jones, Burness Edward
I-054-005	Jones, Clyde & Wilma
I-057-010	Lewin, Melinda
I-057-013	Lewin, Melinda
I-063-008	Prevost, Michael E.
N-001-008	Santee Preservation Society
N-001-010	Santee Preservation Society
N-002-013	Coastal Conservation League
N-002-022	Coastal Conservation League
N-002-030	Coastal Conservation League
F-001-004	Fish and Wildlife Service
S-004-002	SC Department of Natural Resources
S-004-007	SC Department of Natural Resources
F-001-007	Fish and Wildlife Service
F-001-008	Fish and Wildlife Service
<i>N-003-009*</i>	<i>SC Native Plant Society</i>
<i>N-004-005*</i>	<i>Palmetto Conservation</i>
<i>F-005-002*</i>	<i>Fish and Wildlife Service- Cape Romain NWR</i>
<i>F-008-004*</i>	<i>Fish and Wildlife Service</i>
<i>F-008-007*</i>	<i>Fish and Wildlife Service</i>

\*Italicized comments indicate those received during the extended scoping period.

## **Appendix J:**

### **Comment Forms, Letters, Emails, Court Reporter Transcript, and Petition**

## **Individual Comments (I)**



**Orler, Emily - Washington, DC**

---

**From:** Hamletartgallery [hamletartgallery@aol.com]  
**Sent:** Friday, October 22, 2010 3:07 PM  
**To:** McGee, Lauren - Washington, DC  
**Cc:** lgraham.senate.gov@aol.com; mpswenson@coastalobserver.com  
**Subject:** Opposition to 115kv Transmission Line for McClellanville

**Follow Up Flag:** Follow up  
**Flag Status:** Completed

Dear Ms. McGee:

I vehemently oppose the power line's proposed route from the Jamestown area. I was unable to attend the scoping meeting in McClellanville due to the bad weather and the distance to travel, but I want to absolutely oppose the proposed line coming from Jamestown.

I own property and a home that will be affected by the proposed Jamestown route. I will have to pass underneath the proposed line several times a day and do not want my family, my children, and my grandchildren to be exposed to the negative, electromagnetic, and environmental effects of a power line of this magnitude.

My mother owns a farm and this power line will cut a swath of havoc through her land, destroying pine trees and disturbing an old slave graveyard (which will probably have to be relocated) within the proposed power line. This line will devalue the property that has been in my family for generations; you'll effectively be devaluing our heritage and also taking away farming income from my eighty year old mother.

McClellanville has a population of approximately 3,232 people. You are proposing spending \$110 million over thirty years to improve their power outages which equates to approximately 2 hours per year for the McClellanville residents. So you're proposing to spend something over 4 million a year to save 3,000 plus residents from the inconvenience of being without power for 2 hours a year? You really must have more money than accountants, what are you thinking? Why don't you just give those folks \$1500 a year relief on their power bill, bet they would like that a lot more. I could easily withstand 2 hours without power and reduction in my electric bill.

Can't wait for the wetlands folks to hear about this? You'll also be destroying wetlands property as you propose to build this line.

If you decide to come through our area, get ready for plenty of opposition. Using the **existing power lines** from Belle Isle which would be feasible, cost less, and disrupt fewer people for an area that already has the huge mammoth power lines. Why can't you do for once something because it is the right thing to do?

We don't want your power line in our community, on our land and disrupting our lives.

Sincerely,

Stephanie Shuler Hamlet  
843-257-2588  
843-860-9853

501 Lawton Farm Lane  
Jamestown, S.C. 29453

October 19, 2010

Ms. Lauren McGee, Environmental Scientist  
USDA Rural Utilities Service  
Engineering & Environmental Staff  
1400 Independence Avenue, SW, Stop 1571  
Washington, DC 20250

Reference: Notice of Public Scoping and Request for Comment  
McClellanville 115 kV Transmission Line Project

As a Personal Representative for my late Mother, Mabel McCarley, TTEE for the McCarley Trust, I received your notice referenced above and have the following comments:

Neither my brother nor I are in favor of a substation near or any additional power lines crossing our small piece of property along Highway 17 N in the Charity Corridor and next to the Morrison's residence at 8965 Highway 17 N. (see Tax Map 7310000010/11). There is a working line there now owned by South Carolina Electric and Gas. Though some may see this as a low priority because it is forest and agricultural land, it is our desire to consider residential dwelling(s) in the near future.

Wouldn't it be more beneficial with the "Help Keep America Green" concept and have less of an environmental impact, to consider underground lines along the proposed routes? This area was a disaster after Hurricane Hugo.

Thank you for the opportunity to respond. Please continue any future correspondence in this matter to me.

Sincerely,



*for* Elizabeth M. Archer - Co-Personal Representative  
Mabel McCarley  
MCCARLEY TRUST  
149 Stoneridge Road  
Chapin, South Carolina 29036-8004

Cc: Robert J. McCarley, III - Co-Personal Representative

**Orler, Emily - Washington, DC**

---

**From:** Clifford & Diane Bye [byec@msn.com]  
**Sent:** Sunday, October 17, 2010 8:56 AM  
**To:** McGee, Lauren - Washington, DC  
**Subject:** McClellanville 115kV Transmission Line

**Importance:** High

Lauren McGee,  
This will be a first as I've never addressed this project in this manner before. My concerns are with the  
**CHARITY to McCLELLANVILLE MACRO-CORRIDOR**

My name is:  
Clifford M. Bye  
126 Saint James Blvd.  
Goose Creek, SC 29445  
HM Tel : (843) 797-3497  
Cell Tel : (843) 442-2559

Property Location : Berkeley County, SC GIS# 241-00-00-002  
Temporary Addresses: 1941, 1943, 1945, 1947 and 1949 United Drive  
Huger, SC 29450

This may be confusing but this block of property is developed and approved (3/30/07) by Berkeley County for division into five parcels ranging from 4.5 to 6.94 acres.

This land has been cleared, landscaped, planted with grass, 900' driveway with 50' turn-around, septic tank and field installed and approved, water well (190' deep) installed, electric power (200 amp) service installed with temporary 100 amp service box installed.

Preliminary septic sites for the additional 4 lots approved by Berkeley County.

House plans and RV Garage have been engineered by Hunt Engineering Consultants (Tel # (843) 200-9267) in 2008.

Property is listed in MLS by Longbay Properties (843) 729-9775.

The surrounding land is already developed with homes built.

We have owned this property since 1985 and started developing it in "earnest" in 2006. This property has our hearts already installed but with money already invested and the "recession" in place; we are "on-hold" for building our home until a lot is "sold".

I have documentation of all of the above including hundreds of pictures (time stamped) and available for emailing.

I might add other things including:

**Bald Eagles** perching in my trees looking for prey on the cleared land. Still trying to get a picture...but neighbors have seen them, too.

Property borders on a 88 acre **pond** with 1/2 acre pond on home site.

Needless to say that there are **wetlands** leading to the existing 88 acre "Bates pond" (1970's).

**Proximity of surrounding residences.**

I also attended the meetings and asked WHY this new transmission line shouldn't follow the existing 230 kV Santee power line that runs from Cainoy to Honey Hill. Minimal impact as the existing right-of-way would only have to be enlarged.

I hope this expresses my concerns. I'm sure I will re-read this a hundred times and wish I had included more facts.

ANY questions that I can clarify - PLEASE call me on my cell phone.

Sincerely,

Cliff Bye

## Orler, Emily - Washington, DC

---

**From:** McGee, Lauren - Washington, DC  
**Sent:** Thursday, October 21, 2010 3:28 PM  
**To:** D. Rodin  
**Cc:** Orler, Emily - Washington, DC; Bill Rogers; Leon Kolankiewicz; Nathalie Jacque  
**Subject:** RE: Scoping meeting for Power Line to McClellanville by Central Electric Power

Ms. Shuler-Rodin, Thank you for providing your comments. I have copied Ms. Emily Orler of RUS, Mr. Bill Rogers of Central Electric, and Mr. Leon Kolankiewicz & Ms. Nathalie Jacque of Mangi Environmental, who are tracking comments for this project. This email is now part of the official record and will be considered as the project team makes its decision. Again thank you and have a nice day –

Lauren McGee | Environmental Scientist  
Rural Development | Rural Utilities Service (RUS)  
U.S. Department of Agriculture  
Mail Stop 1571 | Rm 2244-S  
1400 Independence Ave, SW | Washington, DC 20250  
Phone: 202-720-1482 | Fax: 202-690-0649  
Email: [lauren.mcgee@wdc.usda.gov](mailto:lauren.mcgee@wdc.usda.gov)  
<http://www.usda.gov/rus/water/ees/envirom.htm>

"Committed to the future of rural communities."

"Estamos dedicados al futuro de las comunidades rurales."

---

**From:** D. Rodin [<mailto:rodind@homesc.com>]  
**Sent:** Wednesday, October 20, 2010 9:41 PM  
**To:** McGee, Lauren - Washington, DC  
**Subject:** Scoping meeting for Power Line to McClellanville by Central Elect Power

Hi,

I was at the September 29th Scoping meeting for the proposed RUS financial assistance to Central Electric Power for constructing a 115kV transmission line to McClellanville, but I arrived in the middle of the first meeting and did not stay for the 2nd. I did speak with you briefly.

I just want to say that I am opposed specifically to the proposed route for the line to run from Jamestown to McClellanville. I am also opposed to spending that kind of money when our economy is in such bad shape to provide power to 3,000-4,000 people. While I do believe that the residents of McClellanville should have reliable power, I don't think that losing power for up to ten hours in a year or in four years necessitates this kind of expenditure.

I also oppose this specific line because:

1--one of the two possible routes from Jamestown would put it right behind my residence. I am concerned about health, environmental, historical, and ecological questions. If it does go behind my residence, I will have a power line in my front yard and then one in my backyard. I say "no". What does that do to the value of my property? Who would buy my house, if I am forced to sell it in the future?

2--that same route will go through my mother's property and it will devalue her property. She intends one day for her property to pass to her children. Which one them do you think will want the part with the power line?

3-that same route will also go through parts of what once was Mt. Moriah plantation and one of the historians we talked to thinks the actual plantation house (and other supporting structures, plots, etc) was in the field that this line will go through or next to.

4-there is a significant number of red cockaded woodpecker nesting sites in this area and other wildlife that will be adversely affected. One of the reasons we built our house in this area was to enjoy and be a part of nature. That will be destroyed.

5-we lose power fairly often and it appears to me that adding McClellanville to the existing facilities here would make out outages more frequent and longer.

6-after looking at the cost estimates, there does not appear to be any cost allocations for the maintenance of the lines and it seems that to maintain the much longer line from Jamestown would contribute significantly to the estimates you already have and pretty much make the line from Jamestown prohibitive at best.

I hope my views will be taken into consideration.

Sincerely,

Donna Shuler-Rodin

1272 French Santee Road

Jamestown, SC 29453

**Orler, Emily - Washington, DC**

---

**From:** tracey filzen [tifilzen04@hotmail.com]  
**Sent:** Friday, October 22, 2010 3:46 PM  
**To:** McGee, Lauren - Washington, DC  
**Subject:** Scoping meeting for Power Line to McClellanville by Central Elect Power

Ms. McGee,

I was not able to attend the September 29th Scoping meeting for the proposed RUS financial assistance to Central Electric Power for constructing a 15kV transmission line to McClellanville, but I am very concerned about the environmental impact to the proposed land disturbance and the effect it will have on my grandmother's property and property that I will one day inherit. I would like to go on record as being opposed to this power line.

As you know the route will go through wetlands, disturbing the natural habitat for the Red Headed Cockaded Woodpecker and other wildlife. I do not understand the reason to run a new power line through two counties where power already exists. From the information I have read, this venture is a waste of money. McClellanville already has power from the lines that run from Charleston and Georgetown. I am not sure why anyone would want to disturb pristine forest land to run an additional power-line to prevent the residents of McClellanville from possibly being without power for 10 hours. I find it to be absurd that it will take three power lines to provide power to one town. With the technological advances we have today is there not a way to restructure the existing lines to do the same thing?

We also need to protect the wildlife, the pristine forest and possible historical areas from destruction. Based on the route of the line, it will split farmland in half and devalue the land. Would you want an ugly power line running through your property? I think not! It would save money and time if you use the existing power line structure and make needed adjustments. If we were to have another Hurricane Hugo, the power line would be destroyed by falling trees. Are there provisions for down lines and maintenance, or is this just build it and see what happens?

Someone should re-evaluate this plan and consider the destruction of pristine forests and the habitat for the red headed cockaded woodpecker. I am sure there are other alternatives to this rather than running it straight through our property.

I hope my views will be taken into consideration.

Tracey Filzen  
5105 Holly Lane  
Morehead City NC 28557

**Thank you for your participation!**

Your comments are vital to the completion of the environmental review process. Please submit this form and any additional comment letters at the meeting location, mailing to the address below, or emailing Lauren McGee of the USDA Rural Utilities Service [lauren.mcgee@wdc.usda.gov](mailto:lauren.mcgee@wdc.usda.gov).

For additional information please visit the USDA RUS Environmental Staff website, and select "Central Electric Power Cooperative, Inc" <http://www.usda.gov/rus/water/ees/eis.htm>.

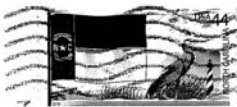
Please submit all comments by October 29, 2010.



Lauren McGee  
1400 Independence Ave. SW  
Mail Stop 1571  
Washington, DC 20250-1571

Tape Here  
(Please do not staple)

20250+1571



RECEIVED  
USDA MAIL CENTER  
2010 OCT 18 AM 11:23  
MAIL HAS BEEN SORTED

**McCellanville 115kV Transmission Line  
Public Scoping Comment Form**

**We need your input!** Public participation is an essential component of the environmental review process. Please fill out the following form to ensure that the review, and ultimately the decision, considers the affected communities' opinions.

Please check the following issues of concern regarding the construction of the transmission line:

- ☐ Project purpose and need
- ☒ Visual/Aesthetic resources
- ☒ Proximity to residence
- ☐ Land use (agriculture, residential, recreation/ tourism)
- ☐ Water resources (floodplains, wetlands, river crossings)
- ☒ Biological resources (wildlife habitat, raptors, endangered species)
- ☒ Historic and cultural sites (landmarks, traditional cultural properties)
- ☐ Human health and safety (electromagnetic fields)
- ☐ Other: \_\_\_\_\_

Which of these resources are of the greatest importance within the project area, in your opinion?

I HAVE A 5.5 ACRE RESIDENCE NEAR  
TOWNSEND. I WOULD NOT LIKE TO HAVE  
THE LINE RUNNING THRU OR NEAR MY  
PROPERTY IF POSSIBLE. YOU SEEM TO BE  
DOING AS MUCH AS POSSIBLE TO AVOID  
IMPACTING AS MANY PEOPLE, PLACES  
& THINGS AS POSSIBLE.



What additional key issues should be addressed when assessing the potential impacts of the project?

---

---

---

---

---

---

If you own property in one of the below proposed corridors, please indicate all the existing uses and provide the property's address:

- ☐ Agriculture/Silviculture  
☐ Commercial  
☐ Conservation Easement  
☐ Industrial  
☒ Residential  
☐ Other: \_\_\_\_\_

Physical Address of Property:

1076 MILLWOOD LOOP DR, JAMESTOWN

Please describe any special uses or circumstances on your property that you would like to be considered in the assessment of the project.

---

---

---

---

---

---

In your opinion, was the project description, purpose, and need for the project adequately explained? If not, what additional information is needed?

YES

---

---

---

---

---

---

Your participation through commenting is essential throughout the entire environmental review process. If you would like to continue to receive information about the project and upcoming opportunities for participation through joining the mailing list, please check the following box and provide your mailing address.

☒ Yes, I would like to join the mailing list to receive information about the McClellanville transmission line project throughout its environmental review process.

**Contact Information**

Name: RICHARD A. FOSS

Affiliation (Optional): NONE

Mailing Address: 1076 MILLWOOD LOOP DR

City: JAMESTOWN State: SC Zip Code: 29453

McClellanville 115kV Transmission Line  
Public Scoping Comment Form

Thank you for your participation!

Your comments are vital to the completion of the environmental review process. Please submit this form and any additional comment letters at the meeting location, mailing to the address below, or emailing Lauren McGee of the USDA Rural Utilities Service [lauren.mcgee@wdc.usda.gov](mailto:lauren.mcgee@wdc.usda.gov).

For additional information please visit the USDA RUS Environmental Staff website, and select "Central Electric Power Cooperative, Inc" <http://www.usda.gov/rus/water/ees/eis.htm>.

Please submit all comments by October 29, 2010.



Place  
Stamp  
Here

Lauren McGee  
1400 Independence Ave. SW  
Mail Stop 1571  
Washington, DC 20250-1571

Tape Here  
(Please do not staple)

McCellanville 115kV Transmission Line  
Public Scoping Comment Form

**We need your input!** Public participation is an essential component of the environmental review process. Please fill out the following form to ensure that the review, and ultimately the decision, considers the affected communities' opinions.

Please check the following issues of concern regarding the construction of the transmission line:

- ☐ Project purpose and need
- ☐ Visual/Aesthetic resources
- ☐ Proximity to residence
- ☐ Land use (agriculture, residential, recreation/ tourism)
- ☐ Water resources (floodplains, wetlands, river crossings)
- ☒ Biological resources (wildlife habitat, raptors, endangered species)
- ☐ Historic and cultural sites (landmarks, traditional cultural properties)
- ☒ Human health and safety (electromagnetic fields)
- ☐ Other: \_\_\_\_\_

Which of these resources are of the greatest importance within the project area, in your opinion?

*Least harm to environment*

What additional key issues should be addressed when assessing the potential impacts of the project?

Seems most areas are covered  
in the "Human Environment"

If you own property in one of the below proposed corridors, please indicate all the existing uses and provide the property's address:

- ☐ Agriculture/Silviculture
- ☐ Commercial
- ☐ Conservation Easement
- ☐ Industrial
- ☒ Residential
- ☐ Other: \_\_\_\_\_

Physical Address of Property:

11144 S. Fraser St, 64awn

Please describe any special uses or circumstances on your property that you would like to be considered in the assessment of the project.

MX Line already runs  
across my back yard

In your opinion, was the project description, purpose, and need for the project adequately explained? If not, what additional information is needed?

Very good details given with  
logics behind them

Your participation through commenting is essential throughout the entire environmental review process. If you would like to continue to receive information about the project and upcoming opportunities for participation through joining the mailing list, please check the following box and provide your mailing address.

- ☒ Yes, I would like to join the mailing list to receive information about the McClellanville transmission line project throughout its environmental review process.

Contact Information

Name: Sandra Johnson

Affiliation (Optional): concerned citizen

Mailing Address: PO Box 2397

City: Georgetown State: SC Zip Code: 29442

McClellanville 115kV Transmission Line  
Public Scoping Comment Form

**From:** [McGee, Lauren - Washington, DC](#)  
**To:** [BURNES JONES](#)  
**Cc:** [Orler, Emily - Washington, DC](#); [Bill Rogers](#); [Leon Kolankiewicz](#); [Nathalie Jacque](#)  
**Subject:** RE: power for mcclellanville s. c.  
**Date:** Thursday, October 28, 2010 3:15:45 PM

---

Mr. Jones, Thank you for your comments. I have copied Ms. Emily Orler of RUS, Mr. Bill Rogers of Central Electric, and Mr. Leon Kolankiewicz & Ms. Nathalie Jacque of Mangi Environmental, who are tracking comments for this project. This email is now part of the official record and will be considered as the project team makes its decision. Again thank you and have a nice day –

Lauren McGee | Environmental Scientist  
Rural Development | Rural Utilities Service (RUS)  
U.S. Department of Agriculture  
Mail Stop 1571 | Rm 2244-S  
1400 Independence Ave, SW | Washington, DC 20250  
Phone: 202-720-1482 | Fax: 202-690-0649  
Email: [lauren.mcgee@wdc.usda.gov](mailto:lauren.mcgee@wdc.usda.gov)  
<http://www.usda.gov/rus/water/ees/enviro.htm>

"Committed to the future of rural communities."  
"Estamos dedicados al futuro de las comunidades rurales."

---

**From:** BURNES JONES [<mailto:banjo22@bellsouth.net>]  
**Sent:** Thursday, October 28, 2010 1:03 PM  
**To:** McGee, Lauren - Washington, DC  
**Subject:** power for mcclellanville s. c.



Good afternoon: I think the corridor to use is from Belle Isle. Highway 17 is perfect to use, following about 100 feet or so along the road. The Santee River crossing can be done with no problem. I own property at the edge of the Jamestown Corridor. I had the opportunity to watch a what I believe to be a Ivory Bill Woodpecker on this property. There is no need to run power lines long distances; destroying the use of peoples homes and wildlife Habitat this long distance. The Coast line of Charleston County is booming with people wanting to build; install the power supply on the Coast. Penney Royal, and lines from Georgetown, Mt. Pleasant or even Charleston can handle this power problem. Please keep me informed on the issues.  
address 2735 Star Drive  
North Charleston S. C.  
Phone 843-797-3523

Thank You  
Burness Edward Jones



**Thank you for your participation!**

Your comments are vital to the completion of the environmental review process. Please submit this form and any additional comment letters at the meeting location, mailing to the address below, or emailing Lauren McGee of the USDA Rural Utilities Service [lauren.mcgee@wdc.usda.gov](mailto:lauren.mcgee@wdc.usda.gov).

For additional information please visit the USDA RUS Environmental Staff website, and select "Central Electric Power Cooperative, Inc" <http://www.usda.gov/rus/water/ees/eis.htm>.

Please submit all comments by October 29, 2010.



Place  
Stamp  
Here

Lauren McGee  
1400 Independence Ave. SW  
Mail Stop 1571  
Washington, DC 20250-1571

**Tape Here**  
(Please do not staple)

**McCellanville 115kV Transmission Line**  
Public Scoping Comment Form

**We need your input!** Public participation is an essential component of the environmental review process. Please fill out the following form to ensure that the review, and ultimately the decision, considers the affected communities' opinions.

Please check the following issues of concern regarding the construction of the transmission line:

- ☒ Project purpose and need
- ☒ Visual/Aesthetic resources
- ☐ Proximity to residence
- ☐ Land use (agriculture, residential, recreation/ tourism)
- ☒ Water resources (floodplains, wetlands, river crossings)
- ☒ Biological resources (wildlife habitat, raptors, endangered species)
- ☒ Historic and cultural sites (landmarks, traditional cultural properties)
- ☐ Human health and safety (electromagnetic fields)
- ☐ Other: \_\_\_\_\_

Which of these resources are of the greatest importance within the project area, in your opinion?

environmental - land, water, plants,  
wildlife

What additional key issues should be addressed when assessing the potential impacts of the project?

Consider re-doing HAM42 as a transmission center sending power up 17 to 2 substations as discussed w/ Tim M.

If you own property in one of the below proposed corridors, please indicate all the existing uses and provide the property's address:

- ☐ Agriculture/Silviculture
- ☐ Commercial
- ☐ Conservation Easement
- ☐ Industrial
- ☐ Residential
- ☐ Other: \_\_\_\_\_

Physical Address of Property: \_\_\_\_\_

Please describe any special uses or circumstances on your property that you would like to be considered in the assessment of the project.

In your opinion, was the project description, purpose, and need for the project adequately explained? If not, what additional information is needed?

Yes - well presented - except for reasons Alternatives were not selected - a brief explanation would have been good to hear -

Your participation through commenting is essential throughout the entire environmental review process. If you would like to continue to receive information about the project and upcoming opportunities for participation through joining the mailing list, please check the following box and provide your mailing address.

- ☒ Yes, I would like to join the mailing list to receive information about the McClellanville transmission line project throughout its environmental review process.

**Contact Information**

Name: Cheves Lebold

Affiliation (Optional): Huguenot Society of SC  
resident

Mailing Address: PO Box 432

City: McClellanville State: SC Zip Code: 29458

email: helhalcyon@tds.net

McClellanville 115kV Transmission Line  
Public Scoping Comment Form

Preferred - states  
paper, time & stamps

**Orler, Emily - Washington, DC**

---

**From:** Jay Lyday [wjlyday@hotmail.com]  
**Sent:** Tuesday, October 26, 2010 3:38 PM  
**To:** McGee, Lauren - Washington, DC  
**Subject:** Central Electric Cooperative, Inc.

William J. Lyday, Jr.  
343 Ashley Avenue  
Charleston, SC 29403  
843-607-3008  
[wjlyday@hotmail.com](mailto:wjlyday@hotmail.com)

October 26, 2010

Lauren McGee  
U.S. Department of Agriculture  
1400 Independence Ave, SW  
Washington, DC 20250  
Phone: 202-720-1482 | Fax: 202-690-0649

RE: Central Electric Cooperative, Jamestown Option

Dear Ms. McGee,

I am writing to officially protest the potential Jamestown to McClellanville route of the proposed Central Electric Cooperative, Inc. transmission line. I believe my family property, located at 1222 French Santee Road, will be adversely and irreparably affected by the current suggested course.

I am of the understanding that this route is considered to be the "lowest risk" but may I ask to whom? It is clearly the greatest risk to me and my family as well as to the wildlife and other natural resources of the Jamestown area in the path of the proposed line.

I urge the powers that be to consider all of the options in this matter to the fullest extent. Massive, uninhabited federal tracts exist close to this route that if utilized would relieve the burden from private land owners. In addition, current Berkeley Electric Cooperative easements exist that seem to be of appropriate size to handle the proposed line.

In closing, I note the quotation on your email, *"Committed to the future of rural communities."* How can this be true for Jamestown? It appears our government is committed to the future of the communities it wants to protect and the others should consider their futures expendable.

I thank you for your time and consideration in this urgent matter.

Sincerely,

W. J. Lyday, Jr.



**Orler, Emily - Washington, DC**

---

**From:** Alicia Filzen [filzenag@yahoo.com]  
**Sent:** Thursday, October 21, 2010 10:23 PM  
**To:** McGee, Lauren - Washington, DC  
**Subject:** Fw: Scoping meeting for Power Line to McClellanville by Central Elect Power  
**Attachments:** smime.p7s  
  
**Follow Up Flag:** Follow up  
**Flag Status:** Completed

Subject: Fwd: Scoping meeting for Power Line to McClellanville by Central Elect Power

Subject: Scoping meeting for Power Line to McClellanville by Central Elect Power

Ms. McGee,

I was not able to attend the September 29th Scoping meeting for the proposed RUS financial assistance to Central Electric Power for constructing a 115kV transmission line to McClellanville, but I am very concerned about the environmental impact to the proposed land disturbance and the effect it will have on my mother's property.

As you know the route will go through wetlands, disturb the natural habitat for the Red Headed Cockaded Woodpecker and other wildlife. I do not understand the reason to run a power line through tow counties when power already exist. From the information I have read, this venture is a waste of money. McClellanville already has power and there lines that run from Charleston and Georgetown. Not sure why anyone would want to disturb pristine forest land to run an additional power-line to prevent the residents of McClellanville possibly being without power for 10 hours.

Are we not here to protect the wildlife, the pristine forest and possibly historical areas from destruction. Based on the route of line, it will split farmland in half and devalue the land. Would you want an ugly power line running through your property. I think not. I still do not understand why a new route has to cut. It would save money and time if you use the exist power line structure. If we had another Hugo, the power line would be destroyed by falling trees. Are there provision for downlines and maintenance or is this just build it and see what happens.

Someone should re-evaluate this plan and consider the destruction of pristine forest and the habitat for the red headed cockaded woodpecker. I could not find an environmental impact statement. Was one done?

I hope my views will be taken into consideration.

Alicia Filzen  
509 Hedrick Blvd  
Morehead City NC 28557

## Orler, Emily - Washington, DC

---

**From:** Richard [richardm@mancill.net]  
**Sent:** Wednesday, October 27, 2010 12:00 PM  
**To:** McGee, Lauren - Washington, DC  
**Subject:** Central Electric Cooperative, Jamestown option

27 October 2010  
Lauren McGee  
U.S. Department of Agriculture  
1400 Independence Avenue, SW  
Washington, DC 20250

Re: Central Electric Cooperative, Jamestown Option

Dear Ms. McGee,

I am opposed to the Jamestown Option for Central Electric Power's 115 KV transmission line to McClellanville. My home and farmland is located at 481 Old Gate Lane, Jamestown, S.C. 29453.

Nobody wants a power line cutting thru their property no matter where they live. Jamestown already has more than their share of roads, railroad tracks, and power lines with easements. There are existing easements that could be used without building a new one that dissects family farms with much history.

I have never seen so much detail about wetlands, alligators, woodpeckers, and National forests. What about people, their private property and their heritage. It seems to me that you would prefer to run lines thru citizens back yards than thru the forest. I would urge you to use the National forest and existing easements near the road.

Our property has significant historical value as it fronts the Santee River. Indians, French settlers, and plantations have all occupied this land. There are 8 limestone "fountains" in our wetland areas. Our thoughts are to one day place a conservation easement on the property to preserve it thru the generations as one large tract. There is no way that conservation easements and 75' transmission right of ways go together.

We treasure our family farm and enjoy the peace and tranquility that it affords. I would urge you not to use the Jamestown option.

Best regards,

Richard E. Mancill  
President  
Mancill, Inc.  
Electrical - Plumbing - HVAC  
3201 Mr. Joe White Avenue  
Myrtle Beach, SC 29577  
[richardm@mancill.net](mailto:richardm@mancill.net)  
(843) 448-1489  
(843) 455-7150

**From:** [Leon Kolankiewicz](#)  
**To:** [Nathalie Jacque](#)  
**Subject:** FW: McClellanville Transmission Line Project  
**Date:** Monday, October 11, 2010 6:01:06 PM

---

---

**From:** McGee, Lauren - Washington, DC [mailto:Lauren.McGee@wdc.usda.gov]  
**Sent:** Monday, October 04, 2010 11:16 AM  
**To:** L Ransom  
**Cc:** George Hoddinott; Bill Rogers; Leon Kolankiewicz  
**Subject:** RE: McClellanville Transmission Line Project

Hi Ms. Ransom,

I am sorry that you were not able to attend the meeting. Some this week/early next week, copies of the public comment form, powerpoint slides, and meeting handouts will be available for public viewing on the RUS website.

I have copied Mr. George Hoddinott, the specialist who ran the mapping model for this project, in this email. George, based on the information provided in Ms. Ransom's email, can you determine if the two Midway Nursery properties are within the macro-corridors.

Thanks,

Lauren McGee | Environmental Scientist  
Rural Development | Rural Utilities Service (RUS)  
U.S. Department of Agriculture  
Mail Stop 1571 | Rm 2244-S  
1400 Independence Ave, SW | Washington, DC 20250  
Phone: 202-720-1482 | Fax: 202-690-0649  
Email: lauren.mcgee@wdc.usda.gov  
<http://www.usda.gov/rus/water/ees/environ.htm>

"Committed to the future of rural communities."

"Estamos dedicados al futuro de las comunidades rurales."

---

**From:** L Ransom [mailto:midwaynurseryinc@gmail.com]  
**Sent:** Thursday, September 30, 2010 6:19 PM  
**To:** McGee, Lauren - Washington, DC  
**Subject:** Re: McClellanville Transmission Line Project

Lauren,

We were not able to attend the meeting. Is there anywhere else we can see the maps with this info? We have property on the North Santee River and in the Kilsock Bay area under the name Midway Nursery or Charles E. Small and in Honey Hill in the name of William R. and Susan S Finch. I do not have the property numbers with me. Can you research it with out

them? Let me know.

Thanks,

Linda S Ransom

On Tue, Sep 21, 2010 at 8:31 AM, McGee, Lauren - Washington, DC

<[Lauren.McGee@wdc.usda.gov](mailto:Lauren.McGee@wdc.usda.gov)> wrote:

Hi Mr. Ransom,

A route for the proposed transmission line has not yet been decided. Numerous corridors, from which a route would be selected, are under consideration.

Section 5 of the macro-corridor study prepared for this project includes maps with better resolution. This study is available for public review on the RUS website, located at: <http://www.usda.gov/rus/water/ees/pdf/SC50MTLmcs0910.pdf>. The file is appropriately 5 MB in size. Unfortunately, the maps in this study do not include parcel boundaries for properties included in each proposed corridor. At the public meeting, maps that provide this information will be on display.

If you or a representative will not be able to attend the public meeting, could you please send me a list of addresses for each of your properties that may be within a corridor. I will have one of the consultants for this project look up the parcel information and let you know if the properties fall within one or more of the corridors under consideration.

Thanks and feel free to call me email me if you any additional questions,

Lauren.

Lauren McGee | Environmental Scientist  
Rural Development | Rural Utilities Service (RUS)  
U.S. Department of Agriculture  
Mail Stop 1571 | Rm 2244-S  
1400 Independence Ave, SW | Washington, DC 20250  
Phone: 202-720-1482 | Fax: 202-690-0649  
Email: [lauren.mcgee@wdc.usda.gov](mailto:lauren.mcgee@wdc.usda.gov)  
<http://www.usda.gov/rus/water/ees/environ.htm>

"Committed to the future of rural communities."

"Estamos dedicados al futuro de las comunidades rurales."

---

**From:** L Ransom [mailto:[midwaynurseryinc@gmail.com](mailto:midwaynurseryinc@gmail.com)]

**Sent:** Monday, September 20, 2010 1:39 PM

**To:** McGee, Lauren - Washington, DC

**Subject:** McClellanville Transmission Line Project

We would like a more detailed map of the route of the transmission Line Project. We want to know how close to our properties the lines are running. Please advise where we can locate a more accurate mapping system.

Thanks,

Midway Nursery, Inc.

L. S. Ransom

843-546-7733

**From:** [Leon Kolankiewicz](#)  
**To:** [Nathalie Jacque](#)  
**Subject:** FW: McClellanville 115kV Project  
**Date:** Monday, October 11, 2010 6:00:49 PM

---

---

**From:** McGee, Lauren - Washington, DC [mailto:[Lauren.McGee@wdc.usda.gov](mailto:Lauren.McGee@wdc.usda.gov)]  
**Sent:** Monday, October 04, 2010 11:16 AM  
**To:** Rodin, Mike  
**Cc:** Bill Rogers; Leon Kolankiewicz  
**Subject:** RE: McClellanville 115kV Project

Thank you Mr. Rodin for submitting your comment. I have copied Mr. Bill Rogers of Central Electric and Mr. Leon Kolankiewicz who are tracking comments. This email is now part of the official record for this project and will be considered as the project team makes its decision. Again thank you for submitting your comment and have a nice day –

Lauren McGee | Environmental Scientist  
Rural Development | Rural Utilities Service (RUS)  
U.S. Department of Agriculture  
Mail Stop 1571 | Rm 2244-S  
1400 Independence Ave, SW | Washington, DC 20250  
Phone: 202-720-1482 | Fax: 202-690-0649  
Email: [lauren.mcgee@wdc.usda.gov](mailto:lauren.mcgee@wdc.usda.gov)  
<http://www.usda.gov/rus/water/ees/envirom.htm>

"Committed to the future of rural communities."  
"Estamos dedicados al futuro de las comunidades rurales."

---

**From:** Rodin, Mike [mailto:[Michael.Rodin@jacobs.com](mailto:Michael.Rodin@jacobs.com)]  
**Sent:** Wednesday, September 29, 2010 10:52 AM  
**To:** McGee, Lauren - Washington, DC  
**Subject:** McClellanville 115kV Project

Ms. McGee,  
I read your Revised Macro-Corridor Study Report with great interest, as I reside in the Jamestown corridor.  
In your economic comparison of the various corridors (table 5.2), there is no mention of the 30-year life cycle cost of right-of-way maintenance.  
This can be a significant differentiator between corridors. At \$10,000 per mile per year, (not out of line with current industry metrics), this amounts to \$300,000 per mile over 30 years.

Mike Rodin  
Project Controls Lead  
Jacobs Engineering  
Charleston, SC  
phone: 843-820-4256

cell: 843-810-3317

---

NOTICE - This communication may contain confidential and privileged information that is for the sole use of the intended recipient. Any viewing, copying or distribution of, or reliance on this message by unintended recipients is strictly prohibited. If you have received this message in error, please notify us immediately by replying to the message and deleting it from your computer.



**Thank you for your participation!**

Your comments are vital to the completion of the environmental review process. Please submit this form and any additional comment letters at the meeting location, mailing to the address below, or emailing Lauren McGee of the USDA Rural Utilities Service [lauren.mcgee@wdc.usda.gov](mailto:lauren.mcgee@wdc.usda.gov).

For additional information please visit the USDA RUS Environmental Staff website, and select "Central Electric Power Cooperative, Inc" <http://www.usda.gov/rus/water/ees/eis.htm>.

Please submit all comments by October 29, 2010.



RECEIVED  
USDA MAIL CENTER

OCT 29 10 12

Lauren McGee  
1400 Independence Ave. SW  
Mail Stop 1571  
Washington, DC 20250-1571

Tape Here  
(Please do not staple)

20250-1571

**McCellanville 115kV Transmission Line  
Public Scoping Comment Form**

**We need your input!** Public participation is an essential component of the environmental review process. Please fill out the following form to ensure that the review, and ultimately the decision, considers the affected communities' opinions.

Please check the following issues of concern regarding the construction of the transmission line:

- ☐ Project purpose and need
- ☐ Visual/Aesthetic resources
- ☒ Proximity to residence FUTURE NEXT TWO YRS
- ☒ Land use (agriculture, residential, recreation/ tourism)
- ☐ Water resources (floodplains, wetlands, river crossings)
- ☒ Biological resources (wildlife habitat, raptors, endangered species)
- ☐ Historic and cultural sites (landmarks, traditional cultural properties)
- ☐ Human health and safety (electromagnetic fields)
- ☐ Other: \_\_\_\_\_

Which of these resources are of the greatest importance within the project area, in your opinion?

POWER LINE WILL CROSS HIGHEST ELEVATION OF  
MY PROPERTY - WHERE MY DAUGHTER PLANS TO  
BUILD HER NEW HOME - APPROX. TWO YRS.

OPEN UP AREAS FOR POACHING MY LAND AND  
RIDING 4-WHEELERS ON IT.



What additional key issues should be addressed when assessing the potential impacts of the project?

LOOKING AT CHART - PRESENTED BY CENTRAL ELECTRIC AT THE MEETING - JAMESTOWN WAS NO. 3 OR 4 WITH FREQ. OF POWER OUTAGES NOT VERY GOOD - RECORD.

If you own property in one of the below proposed corridors, please indicate all the existing uses and provide the property's address:

- ☒ Agriculture/Silviculture  
☐ Commercial  
☐ Conservation Easement  
☐ Industrial  
☒ Residential FUTURE  
☐ Other: \_\_\_\_\_

Physical Address of Property:

184 CAMP DAVID TRAIL JAMESTOWN SC 29453

Please describe any special uses or circumstances on your property that you would like to be considered in the assessment of the project.

I HAVE SOME OF THE SAME ENDANGERED SPECIES ON MY LAND AS FOREST SERVICE AND PLANTATIONS SUCH AS EASTERN WILD TURKEYS, BALD EAGLE, SWALLOW TAILED KITES AND VARIOUS TYPES OF DUCKS. YET US FOREST SERVICE CARRIES A HIGHER VALUE THAN MY LAND.

In your opinion, was the project description, purpose, and need for the project adequately explained? If not, what additional information is needed?

THE REP. FROM CENTRAL STATED THEY DID NOT NEED TO REPLACE OR BUILD SUB-STATION IN JAMESTOWN. YET - BERKELEY CO-OP INC HAS PURCHASED LAND ADJOINING THE SANTEE COOPER TRANSMISSION LINE - NOT TO FAR FROM EXISTING SUBSTATION FOR THE SOLE PURPOSE OF PLACING A SUBSTATION ON THIS PROPERTY. THE COST WOULD ADD APPROX 5 ~~THAT~~ MILLION MORE TO THE COST OF THE JAMESTOWN ROUTE

Your participation through commenting is essential throughout the entire environmental review process. If you would like to continue to receive information about the project and upcoming opportunities for participation through joining the mailing list, please check the following box and provide your mailing address.

- ☒ Yes, I would like to join the mailing list to receive information about the McClellanville transmission line project throughout its environmental review process.

Contact Information

Name: DAVID O. SHULER

Affiliation (Optional):

Mailing Address: PO BOX 120

City: JAMESTOWN State: SC Zip Code: 29453

McClellanville 115kV Transmission Line  
Public Scoping Comment Form

**Thank you for your participation!**

Your comments are vital to the completion of the environmental review process. Please submit this form and any additional comment letters at the meeting location, mailing to the address below, or emailing Lauren McGee of the USDA Rural Utilities Service [lauren.mcgee@wdc.usda.gov](mailto:lauren.mcgee@wdc.usda.gov).

For additional information please visit the USDA RUS Environmental Staff website, and select "Central Electric Power Cooperative, Inc" <http://www.usda.gov/rus/water/ees/eis.htm>.

Please submit all comments by October 29, 2010.



Place  
Stamp  
Here

Lauren McGee  
1400 Independence Ave. SW  
Mail Stop 1571  
Washington, DC 20250-1571

**Tape Here**  
(Please do not staple)

**McCellanville 115kV Transmission Line**  
Public Scoping Comment Form

**We need your input!** Public participation is an essential component of the environmental review process. Please fill out the following form to ensure that the review, and ultimately the decision, considers the affected communities' opinions.

Please check the following issues of concern regarding the construction of the transmission line:

- ☐ Project purpose and need
- ☐ Visual/Aesthetic resources
- ☐ Proximity to residence
- ☐ Land use (agriculture, residential, recreation/ tourism)
- ☐ Water resources (floodplains, wetlands, river crossings)
- ☐ Biological resources (wildlife habitat, raptors, endangered species)
- ☐ Historic and cultural sites (landmarks, traditional cultural properties)
- ☐ Human health and safety (electromagnetic fields)
- ☐ Other: \_\_\_\_\_

Which of these resources are of the greatest importance within the project area, in your opinion?

---

---

---

---

---

---

What additional key issues should be addressed when assessing the potential impacts of the project?

- Jamestown substation: rebuilt/replaced  
↳ ~~letter to Sen. Graham~~  
    & Bill Rogers agreed  
↳ has concerns that MCS has not  
    been updated to capture cost  
    of rebuilding sub.

If you own property in one of the below proposed corridors, please indicate all the existing uses and provide the property's address:

- ☐ Agriculture/Silviculture
- ☐ Commercial
- ☐ Conservation Easement
- ☐ Industrial
- ☐ Residential
- ☐ Other: \_\_\_\_\_

Physical Address of Property: \_\_\_\_\_

Please describe any special uses or circumstances on your property that you would like to be considered in the assessment of the project.

---

---

---

---

---

---

In your opinion, was the project description, purpose, and need for the project adequately explained? If not, what additional information is needed?

---

---

---

---

---

---

Your participation through commenting is essential throughout the entire environmental review process. If you would like to continue to receive information about the project and upcoming opportunities for participation through joining the mailing list, please check the following box and provide your mailing address.

- ☐ Yes, I would like to join the mailing list to receive information about the McClellanville transmission line project throughout its environmental review process.

**Contact Information**

Name: DAVID O. SHULER

Affiliation (Optional): \_\_\_\_\_

Mailing Address: PO BOX 126

City: JAMESTOWN State: SC Zip Code: 29453

McClellanville 115kV Transmission Line  
Public Scoping Comment Form

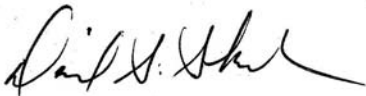
October 6, 2010

Ms. Lauren McGee  
Environmental Scientist  
USDA, Rural Development, Utilities Program  
Engineering and Environmental Staff  
Stop 1571  
1400  
Independence Avenue, SW  
Washington, DC 20250-1571

I am writing to you concerning the proposed McClellanville Transmission Line Project. I have enclosed a letter that I sent to Ms. Stephanie Strength, dated December 29<sup>th</sup>, 2005. The letter I sent to Ms. Strange describes the wildlife habitat and nesting areas located on our property. Allowing the project to come through our property would cause the destruction of all the habitat and nesting areas. The impact would be so great, the loss would be unrecoverable. Basically, we do not want the project to cross our property or surrounding properties for the same reasons the South Carolina Department of Natural Resources doesn't want it to cross the Santee Delta.

I feel that we, as private landowners, should be afforded the same consideration to exclude our property from the project that Central Electric has given to the Santee Delta. Our property and theirs both have many of the same habitats and environmental conditions.

Sincerely,

A handwritten signature in black ink, appearing to read "David S. Shuler", with a stylized, flowing script.

DAVID S. SHULER

December 29, 2005

Stephanie Strength  
Environmental Protection Specialist  
USDA, Rural Development, Utilities Program  
Engineering and Environmental Staff  
Stop 1571  
1400 Independence Avenue, SW  
Washington, DC 20250-1571

I am writing to you in regards to the McClellanville 115kV Transmission Line Project. I understand the Rural Utilities Service is considering several alternatives for this project. This letter is a written request to the Rural Utilities Service to select the alternative to take no action to provide financing assistance to Central Electric or Berkeley Electric Coop if any Micro-corridors that may affect Shulerville, SC or the surrounding area, are selected as the final route for this transmission line project.

I am very concerned about my father's (David O. Shuler) properties in Shulerville, SC which lay in the crosshairs of the Jamestown to McClellanville and the Charity to McClellanville Micro-corridors. Collectively, my father's properties consist of one hundred and twenty acres of the most geographically diverse land found in Berkeley County. These properties are a natural flyways and nesting grounds for migratory birds and the construction of this transmission line would be detrimental to their unique habitat. During the fall and winter months you will find large flocks of Mallards, Wood ducks, Teal and Hooded Mergansers. These ducks use the swamps and old rice fields on the property. Winter also brings droves of Morning Doves to the cornfields. During the spring and summer, ducks raise their young along with the nesting Canadian Geese. In the months of March and April you can see families of Swallow-tail Kites circling the fields in search of food for their young. We manage the property mainly for wildlife, hunting and farming. I believe that putting a transmission line across our property will no doubt have a negative effect on the natural flyways and will upset the nesting seasons. I also know that it will cut the acreage we farm significantly. We also host several community dove shoots each year and we will no longer be able to have these hunts due to the danger of the transmission line. The bottom line is we will no longer be able to use our property for its intended purpose. The transmission line will also open up our property to poachers and other trespassers. For twenty years we have fought off poachers and thieves. We finally got things under control about three years ago and now if the line comes through our property, we are back to square one.

One day I will inherit this property as my father did before me. I intend to pass it to my children in as good or better shape than it is now. If you have never owned a large track of land then it is hard for you to understand how we feel. I have spent many hours

teaching my children how to care for this property, grooming them to carry on our family's legacy.

I attended the meeting held in McClellanville on December 14, 2005. I would just like to say it was not an official public meeting. I feel the forum used to facilitate this "get together" was just a way to control the people who are angry and upset about the project. I also feel that the analysis performed by the Mangi Environmental Group was biased by all accounts. How can you give the Santee Delta a plus fifty points for managing for migratory birds and give our property a minus fifty points when we manage for the same reasons. The Francis Marion National Forest was also given minus points and they not only manage the forest for migratory birds but also a whole list of other threatened and endangered species including plants. The only way to prove that the analysis is not bogus is to select a corridor that crosses the Santee River and runs the project into McClellanville via Highway 17. We already know that your agency turned down Central Electric's first proposal and that the South Carolina Department of Natural Resources stated in the initial meetings that the transmission line would not cross Santee River at Highway 17 because it would interfere with the management of the Santee Delta and damage migratory bird routes. This in itself is enough to bias the results of the analysis. I also would like to call your attention to the cost estimates. I noticed that the cost estimate for the corridor from Jamestown to McClellanville did not include the cost of rebuilding or constructing a new substation in Jamestown. I spoke with Mr. Kidd and Mr. Rogers from Central Electric and during our discussion they said the present substation in Jamestown would not support the proposed transmission line because of its age. They stated that the existing substation would have to be reworked and updated or a new substation would have to be built. Why is this not figured into the cost estimate? I would also like to know why the private landowners have been given one set of information and cost estimates while State and Federal Agencies have received copies of an analysis with totally different results, maps and cost estimates.

I have copies of all the reports on the analysis sent to the Federal Agencies from Mangi Environmental Group. I have a draft copy sent for comment, a copy without cost estimates and a final copy including cost estimates. I compared the final copy with the information on the CDs sent to private landowners. The information on one is not compatible with the other. This really befuddles me and I think that is the whole point. I think Central Electric's strategy is to keep everyone confused. As a Coop member and future landowner, I cannot afford to be confused.

We have formed a grassroots coalition against the project coming through Shulerville, SC. We are prepared to retain legal council and request permission from the U.S. Government to suit the USDA Rural Utilities Service in a class-action lawsuit. This legal action must be taken to contest the validity of the analysis and its acceptance by the Rural Utilities Service.

I cannot believe you would even consider loaning Central Electric a dime for anything. From the start of this whole thing they have approached every landowner with an arrogant posture, nothing short of a playground bully. The whole Coop power system is

a system that any Mafioso would envy. Central Electric is nothing more than muscle for the Coops in our state. Central Electric does all the "dirty work" so the local Coop, in this case Berkeley Electric Coop, can maintain a squeaky clean image. I hope that someday the State of South Carolina will put the Coops under the thumb of the SC Public Service Commission to be governed like privately owned utilities. Georgia and Florida have done this and it cleaned up their Coops unruliness.

I appreciate your time and consideration of this request. If you have and questions please feel free to contact me at: (843) 336-3248 (days) or (843) 761-9797 (eves).

Sincerely,

A handwritten signature in black ink, appearing to read "David Shawn Shuler", with a long horizontal flourish extending to the right.

DAVID SHAWN SHULER  
125 Travis Hill Road  
Moncks Corner, SC 29461

## Orler, Emily - Washington, DC

---

**From:** McGee, Lauren - Washington, DC  
**Sent:** Thursday, October 21, 2010 3:38 PM  
**To:** Orler, Emily - Washington, DC; Bill Rogers; Leon Kolankiewicz; Nathalie Jacque  
**Subject:** FW: Power line (McClellanville)

-----Original Message-----

From: McGee, Lauren - Washington, DC  
Sent: Thursday, October 21, 2010 3:22 PM  
To: 'Meredith Shuler'  
Subject: RE: Power line (McClellanville)

Ms. Shuler, Thank you for your comment. I have copied Ms. Emily Orler of RUS, Mr. Bill Rogers of Central Electric, and Mr. Leon Kolankiewicz & Ms. Nathalie Jacque of Mangi Environmental, who are tracking comments for this project. This email is now a part of the official record and will be considered as the project team makes its decision. Again thanks  
-

Lauren McGee | Environmental Scientist  
Rural Development | Rural Utilities Service (RUS) U.S. Department of Agriculture Mail Stop  
1571 | Rm 2244-S 1400 Independence Ave, SW | Washington, DC 20250  
Phone: 202-720-1482 | Fax: 202-690-0649  
Email: [lauren.mcgee@wdc.usda.gov](mailto:lauren.mcgee@wdc.usda.gov)  
<http://www.usda.gov/rus/water/ees/envIRON.htm>

"Committed to the future of rural communities."  
"Estamos dedicados al futuro de las comunidades rurales."

-----Original Message-----

From: Meredith Shuler [<mailto:meredith.shuler@mwv.com>]  
Sent: Wednesday, October 20, 2010 3:46 PM  
To: McGee, Lauren - Washington, DC  
Subject: Power line

Lauren,

I am opposed to the power line that is planned to run through Jamestown.

Thanks,  
Meredith

This electronic message contains information from MeadWestvaco Corporation or subsidiary companies, which may be confidential, privileged or otherwise protected from disclosure. The information is intended to be used solely by the recipient(s) named. If you are not an intended recipient, be aware that any review, disclosure, copying, distribution or use of this transmission or its contents is prohibited. If you have received this transmission in error, please notify MeadWestvaco immediately at [postmaster@mwv.com](mailto:postmaster@mwv.com).



**Thank you for your participation!**

Your comments are vital to the completion of the environmental review process. Please submit this form and any additional comment letters at the meeting location, mailing to the address below, or emailing Lauren McGee of the USDA Rural Utilities Service [lauren.mcgee@wdc.usda.gov](mailto:lauren.mcgee@wdc.usda.gov).

For additional information please visit the USDA RUS Environmental Staff website, and select "Central Electric Power Cooperative, Inc" <http://www.usda.gov/rus/water/ees/eis.htm>.

Please submit all comments by October 29, 2010.



Place  
Stamp  
Here

Lauren McGee  
1400 Independence Ave. SW  
Mail Stop 1571  
Washington, DC 20250-1571

**Tape Here**  
(Please do not staple)

**McCellanville 115kV Transmission Line**  
Public Scoping Comment Form

**We need your input!** Public participation is an essential component of the environmental review process. Please fill out the following form to ensure that the review, and ultimately the decision, considers the affected communities' opinions.

Please check the following issues of concern regarding the construction of the transmission line:

- ☒ Project purpose and need
- ☒ Visual/Aesthetic resources
- ☐ Proximity to residence
- ☐ Land use (agriculture, residential, recreation/ tourism)
- ☐ Water resources (floodplains, wetlands, river crossings)
- ☒ Biological resources (wildlife habitat, raptors, endangered species)
- ☐ Historic and cultural sites (landmarks, traditional cultural properties)
- ☐ Human health and safety (electromagnetic fields)
- ☐ Other: \_\_\_\_\_

Which of these resources are of the greatest importance within the project area, in your opinion?

*EFFECTS ON BIOLOGICAL RESOURCES*  
*VISUAL*

What additional key issues should be addressed when assessing the potential impacts of the project?

How many red cockaded woodpecker nest trees would be affected?

What portion of the current distribution lines would be removed? Modified?

If you own property in one of the below proposed corridors, please indicate all the existing uses and provide the property's address:

- ☐ Agriculture/Silviculture
- ☐ Commercial
- ☐ Conservation Easement
- ☐ Industrial
- ☐ Residential
- ☐ Other: \_\_\_\_\_

Physical Address of Property: \_\_\_\_\_

Please describe any special uses or circumstances on your property that you would like to be considered in the assessment of the project.

In your opinion, was the project description, purpose, and need for the project adequately explained? If not, what additional information is needed?

YES.

Your participation through commenting is essential throughout the entire environmental review process. If you would like to continue to receive information about the project and upcoming opportunities for participation through joining the mailing list, please check the following box and provide your mailing address.

- ☒ Yes, I would like to join the mailing list to receive information about the McClellanville transmission line project throughout its environmental review process.

**Contact Information**

Name: S. DAVID STONEY  
Affiliation (Optional): DIRECTOR, KITCHEN TABLE CLIMATE STOCK  
Mailing Address: POB 523 Group  
City: McClellanville State: SC Zip Code: 29458

McClellanville 115KV Transmission Line  
Public Scoping Comment Form

**Thank you for your participation!**

Your comments are vital to the completion of the environmental review process. Please submit this form and any additional comment letters at the meeting location, mailing to the address below, or emailing Lauren McGee of the USDA Rural Utilities Service [lauren.mcgee@wdc.usda.gov](mailto:lauren.mcgee@wdc.usda.gov).

For additional information please visit the USDA RUS Environmental Staff website, and select "Central Electric Power Cooperative, Inc" <http://www.usda.gov/rus/water/ees/eis.htm>.

Please submit all comments by October 29, 2010.



Lauren McGee  
1400 Independence Ave. SW  
Mail Stop 1571  
Washington, DC 20250-1571

Tape Here  
(Please do not staple)



**McCellanville 115kV Transmission Line  
Public Scoping Comment Form**

**We need your input!** Public participation is an essential component of the environmental review process. Please fill out the following form to ensure that the review, and ultimately the decision, considers the affected communities' opinions.

Please check the following issues of concern regarding the construction of the transmission line:

- ☐ Project purpose and need
- ☐ Visual/Aesthetic resources
- ☐ Proximity to residence
- ☐ Land use (agriculture, residential, recreation/ tourism)
- ☐ Water resources (floodplains, wetlands, river crossings)
- ☐ Biological resources (wildlife habitat, raptors, endangered species)
- ☐ Historic and cultural sites (landmarks, traditional cultural properties)
- ☐ Human health and safety (electromagnetic fields)
- ☐ Other: \_\_\_\_\_

Which of these resources are of the greatest importance within the project area, in your opinion?

---

---

---

---

---

---

---

What additional key issues should be addressed when assessing the potential impacts of the project?

---

---

---

---

---

---

If you own property in one of the below proposed corridors, please indicate all the existing uses and provide the property's address:

- ☐ Agriculture/Silviculture  
☐ Commercial  
☐ Conservation Easement  
☐ Industrial  
☒ Residential  
☐ Other: \_\_\_\_\_

Physical Address of Property:

1402 River Rd. McClellanville, S.C.  
29458

Please describe any special uses or circumstances on your property that you would like to be considered in the assessment of the project.

---

---

---

---

---

---

In your opinion, was the project description, purpose, and need for the project adequately explained? If not, what additional information is needed?

---

---

---

---

---

---

Your participation through commenting is essential throughout the entire environmental review process. If you would like to continue to receive information about the project and upcoming opportunities for participation through joining the mailing list, please check the following box and provide your mailing address.

- ☒ Yes, I would like to join the mailing list to receive information about the McClellanville transmission line project throughout its environmental review process.

Contact Information

Name: NEAL M. SUTLER

Affiliation (Optional):

Mailing Address: 1333 ERCKMANN DR.

City: MT. PLEASANT State: S.C. Zip Code: 29464

McClellanville 115kV Transmission Line  
Public Scoping Comment Form

## Orler, Emily - Washington, DC

---

**From:** Squeaky Swenson [coastalobserverpub@sc.rr.com]  
**Sent:** Tuesday, October 19, 2010 1:27 PM  
**To:** McGee, Lauren - Washington, DC  
**Subject:** Re: Scoping meetings for Central Electric for McClellanville 115kv Transmission Line

Thanks Ms. McGee. I have to tell you that I had a chance to look up the population of McClellanville and it's a whopping 3,235.

On Oct 19, 2010, at 1:07 PM, McGee, Lauren - Washington, DC wrote:

> Thank you Ms. Swenson for providing your comments. I have copied Ms.  
> Emily Orler of RUS, Mr. Bill Rogers of Central Electric, and Mr. Leon  
> Kolankiewicz & Ms. Nathalie Jacque of Mangi Environmental, who are  
> tracking comments for this project. This email is now part of the  
> official record and will be considered as the project team makes its  
> decision. Again thank you for submitting this email. I look forward  
> to also receiving your letter via mail. Have a nice day -  
>  
>  
> Lauren McGee | Environmental Scientist Rural Development | Rural  
> Utilities Service (RUS) U.S. Department of Agriculture Mail Stop 1571  
> | Rm 2244-S 1400 Independence Ave, SW | Washington, DC 20250  
> Phone: 202-720-1482 | Fax: 202-690-0649  
> Email: [lauren.mcgee@wdc.usda.gov](mailto:lauren.mcgee@wdc.usda.gov)  
> <http://www.usda.gov/rus/water/ees/envIRON.htm>  
>  
> "Committed to the future of rural communities."  
> "Estamos dedicados al futuro de las comunidades rurales."  
>  
>  
>  
>  
> -----Original Message-----  
> From: Squeaky Swenson [<mailto:coastalobserverpub@sc.rr.com>]  
> Sent: Tuesday, October 19, 2010 1:00 PM  
> To: McGee, Lauren - Washington, DC  
> Subject: Scoping meetings for Central Electric for McClellanville  
> 115kv Transmission Line  
>  
> Hello:  
>  
> I just want to go on record as opposing the power line listed above  
> going through the Jamestown, S.C. community. There are so many  
> problems with the concept that I don't really even know where to  
> begin.  
>  
> First of all, you held a scoping meeting in McClellanville which  
> required many of the people who will be affected by the power line to  
> travel 20 to 30 miles one way. Many of the people in the Jamestown  
> community are elderly and were unable to attend. My mother owns  
> property, property that will someday pass to me and my family and she  
> was unable to attend because of the distance. Shame on you!!!  
>

> Secondly, you'll be cutting right through her farm with this power  
> line. Not only will you destroy the value of property that has been in  
> my family for generations, you'll effectively devalue part of her  
> farming income by cutting a 75 foot swath through her property.  
>  
> Thirdly, exactly what is the population of McClellanville? You are  
> proposing spending \$110 million over thirty years to improve power to  
> how many residents? If the population of McClellanville is over 5,000,  
> I'd be surprised. So what you're proposing is that you spend something  
> \$220,000 per person to improve the power, based on 5,000 residents. I  
> live in Pawleys Island with a population of 10,000 and we still have  
> power outages. So I just can't figure out your math on this one. I was  
> hoping to someday move to my Mother's, so I guess my future is not  
> something that is being considered. I could build a house for  
> \$220,000, for goodness sake.  
>  
> Fourthly, who has done any research about any historical parcels that  
> will be decimated by your action? There are former rice plantations,  
> cotton plantations, Indian burial grounds right in the path of this  
> monstrosity. Plus the French Huguenot monument is right on the river.  
> That's a monument dedicated to the French Huguenots who built a small  
> village in Jamestown, S.C. in the 1600s. There was even a trading post  
> and revolutionary war road right smack in the middle of the proposed  
> track.  
>  
> Fifthly, I have never heard from a single McClellanville resident a  
> single complaint about power outages and I've been making some calls  
> to people I know.  
>  
> Sixthly, you'll be cutting through wetlands on my Mom's property.  
> Talk about affecting the environment.  
>  
> Seventhly, what about the visual impact? Those huge power lines are a  
> scourge on the eye. Why can't they be run underground? I am sure that  
> the obvious answer is that it will cost too much money. Well, here's a  
> thought - all those administrative costs that are paid to Central  
> Electric need to be cut by about 30%. Use the money that's being paid  
> in the cost of salaries to pay for it.  
>  
> Eighthly, you'll be in close proximity to my other siblings' homes.  
> What about the danger of electromagnetic fields. Has anyone considered  
> that?  
>  
> Ninthly, what about the impact on wildlife? Our poor animals are  
> losing habitat every day in S.C. What about them?  
>  
> All in all, I've got to say that there is no upside to running this  
> power line through the Jamestown route.  
>  
> Hopefully, you'll read my comments, but just to make sure, I'll be  
> sending via the mail.  
>  
> I thank you for your time.  
>  
> M.P. Swenson  
> 843-237-8438  
> 843-237-8179

>  
> P.O. Box 905  
> Pawleys Island, S.C. 29585

Thank you for your participation!

Your comments are vital to the completion of the environmental review process. Please submit this form and any additional comment letters at the meeting location, mailing to the address below, or emailing Lauren McGee of the USDA Rural Utilities Service [lauren.mcgee@wdc.usda.gov](mailto:lauren.mcgee@wdc.usda.gov).

For additional information please visit the USDA RUS Environmental Staff website, and select "Central Electric Power Cooperative, Inc" <http://www.usda.gov/rus/water/ees/eis.htm>.

Please submit all comments by October 29, 2010.



Place  
Stamp  
Here

Lauren McGee  
1400 Independence Ave. SW  
Mail Stop 1571  
Washington, DC 20250-1571

Tape Here  
(Please do not staple)

**McCellanville 115kV Transmission Line  
Public Scoping Comment Form**

**We need your input!** Public participation is an essential component of the environmental review process. Please fill out the following form to ensure that the review, and ultimately the decision, considers the affected communities' opinions.

Please check the following issues of concern regarding the construction of the transmission line:

- ☒ Project purpose and need
- ☒ Visual/Aesthetic resources
- ☒ Proximity to residence
- ☒ Land use (agriculture, residential, recreation/ tourism)
- ☒ Water resources (floodplains, wetlands, river crossings)
- ☒ Biological resources (wildlife habitat, raptors, endangered species)
- ☒ Historic and cultural sites (landmarks, traditional cultural properties)
- ☒ Human health and safety (electromagnetic fields)
- ☐ Other: \_\_\_\_\_

Which of these resources are of the greatest importance within the project area, in your opinion?

All have a #1 priority



What additional key issues should be addressed when assessing the potential impacts of the project?

Why can't project go underground?

\_\_\_\_\_  
\_\_\_\_\_  
\_\_\_\_\_  
\_\_\_\_\_

If you own property in one of the below proposed corridors, please indicate all the existing uses and provide the property's address:

- ☐ Agriculture/Silviculture
- ☐ Commercial
- ☐ Conservation Easement
- ☐ Industrial
- ☐ Residential
- ☐ Other: \_\_\_\_\_

Physical Address of Property:

Lanton Farm Road  
Jonestown, SC

Please describe any special uses or circumstances on your property that you would like to be considered in the assessment of the project.

This my mother's property and I will  
some day own a portion of it.  
I would like to build a house  
there - along with my son.

\_\_\_\_\_  
\_\_\_\_\_

In your opinion, was the project description, purpose, and need for the project adequately explained? If not, what additional information is needed?

No - poorly done

\_\_\_\_\_  
\_\_\_\_\_  
\_\_\_\_\_  
\_\_\_\_\_

Your participation through commenting is essential throughout the entire environmental review process. If you would like to continue to receive information about the project and upcoming opportunities for participation through joining the mailing list, please check the following box and provide your mailing address.

- ☒ Yes, I would like to join the mailing list to receive information about the McClellanville transmission line project throughout its environmental review process.

Contact Information

Name: M. P. Swenson

Affiliation (Optional): \_\_\_\_\_

Mailing Address: P.O. Box 905

City: Pawleys Island State: SC Zip Code: 29585

McClellanville 115kV Transmission Line  
Public Scoping Comment Form

**From:** Leon Kolankiewicz  
**To:** Nathalie Jacque  
**Subject:** P&W: McClellanville Transmission Line - Thornhill Farm  
**Date:** Monday, October 11, 2010 6:01:19 PM

---

**From:** McGee, Lauren - Washington, DC [mailto:Lauren.McGee@wdc.usda.gov]  
**Sent:** Monday, October 04, 2010 11:16 AM  
**To:** Gary Thornhill  
**Cc:** Bill Rogers; Leon Kolankiewicz  
**Subject:** RE: McClellanville Transmission Line - Thornhill Farm

Mr. Thornhill, Thank you for submitting this new information. I have copied Mr. Bill Rogers of Central Electric and Mr. Leon Kolankiewicz of Mangi Environmental, who are tracking comments. This email is now part of the official record for this project and will be considered as the project team makes its decision. Again thank you for submitting this email and have a nice day -

Lauren McGee | Environmental Scientist  
Rural Development | Rural Utilities Service (RUS)  
U.S. Department of Agriculture  
Mail Stop 1571 | Rm 2244-S  
1400 Independence Ave, SW | Washington, DC 20250  
Phone: 202-720-1482 | Fax: 202-690-0649  
Email: lauren.mcgee@wdc.usda.gov  
<http://www.usda.gov/rus/water/ees/environ.htm>

"Committed to the future of rural communities."  
"Estamos dedicados al futuro de las comunidades rurales."

---

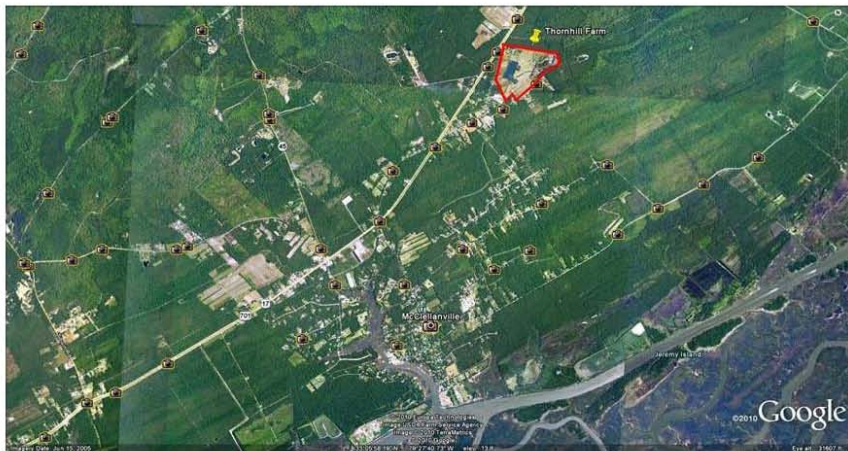
**From:** Gary Thornhill [mailto:gthorn@gmail.com]  
**Sent:** Thursday, September 30, 2010 1:00 PM  
**To:** McGee, Lauren - Washington, DC  
**Subject:** McClellanville Transmission Line - Thornhill Farm

Lauren,

My name is Gary Thornhill and on September 29 I attended the public presentation in McClellanville, SC regarding the transmission line proposal. I thought the presentation was very well done, and I welcome the new transmission line that will improve the reliability of McClellanville's power grid.

I am writing to provide you with additional information about property that I own in McClellanville. Specifically, what I believe you refer to as "projected future development".

I own a 100-acre parcel in McClellanville. The street address of this property is 10882 Highway 17 North in McClellanville. It is located on the east side of Highway 17 North, and is referred to among the locals as "Thornhill Farm". It is the parcel outlined in red in the photo below.



I have no doubt that my property has been designated as either agricultural or undeveloped when it was plugged into the impact/risk calculations that are used to route transmission lines. However I wanted to let you know that the long-term plan for Thornhill Farm is NOT to have it remain in its current configuration. My wife and I have dedicated Thornhill Farm to serve those challenged by disabilities and special needs. (See our website at [www.thornhillfarm.org](http://www.thornhillfarm.org) for more info.) The long-term dream for Thornhill Farm is to have group homes on it so those with special needs can live and work on the farm. Another aspect of the dream is to construct a summer camp on the farm, modeled after an already-successful camp operating in Georgia called Camp Twin Lakes ([www.campthwinlakes.org](http://www.campthwinlakes.org)).

It is also possible that Thornhill Farm may one day acquire adjacent parcels to expand the footprint of the current farm. (Possible adjacent parcels are highlighted in red in the photo below.)



It is my sincerest hope that the projected future development of Thornhill Farm (with roads, homes, multipurpose buildings, impervious parking, recreation center, swimming pool area, and even a roadside storefront) is taken into consideration when routing the power line. I would greatly appreciate it if said power line does NOT run through, or in front of, this property. With luck Thornhill Farm could one day be a place that hundreds of people visit on a regular basis. Part of its appeal will be to provide an "out in the country" summer camp experience to children challenged by illness and special needs, and transmission lines do not exactly fit into this vision.

Thanks in advance for whatever consideration you and your team can give to this additional information about the projected future development of Thornhill Farm.

Sincerely,

Gary Thornhill  
 350 Ralston Creek Street  
 Daniel Island, SC 29492  
 843-224-2301 (cell)  
[gtthorn@gmail.com](mailto:gtthorn@gmail.com)

POBox 53  
558 Pinckney Street  
McClellanville, SC 29458  
September 29, 2010

Ms Lauren McGee  
USDA Rural Utilities Service  
1400 Independence Avenue, SW  
Stop 1571  
Washington, DC 20250

Attention:

A Modest Proposal

I wrote the following letter before I came to the scoping session at the McClellanville elementary school and saw the graph show how often the service to this area is interrupted. Even though I get power from SCE&G, I know their power is even more undependable. I hate that, but I also hate running enough power through the Francis Marion Forest to attract lots of development and vacation homes and congestion and mess. So, I still believe what I wrote earlier, I'm just sobered by the desire to have more dependable electricity, just not so much of it that lots more people come.

My thoughts:

Berkeley Electric is proposing to spend \$10-\$16 Million dollars to construct a 115 kV transmission line through the woods or over the river to provide better service to that part of McClellanville that receives power from their cooperative.

This is my proposal: Take, say, \$12 Million of those dollars and add it to your fund to weatherize houses and to subsidize local wind and solar projects. Net metering would provide power to the local houses and businesses without the trauma to the environment that high power lines risk. Significantly reducing demand would serve us much better than bringing in vastly more power. We live downriver from Berkeley's power plants and already we can't eat the fish from the rivers because of the arsenic and other heavy metals that come from coal-fired power plants. We need to be able to breathe the air and to drink the water. We can learn to use less energy.

Sincerely,

  
Anne Knight Watson

Thank you for your participation!

Your comments are vital to the completion of the environmental review process. Please submit this form and any additional comment letters at the meeting location, mailing to the address below, or emailing Lauren McGee of the USDA Rural Utilities Service [lauren.mcgee@wdc.usda.gov](mailto:lauren.mcgee@wdc.usda.gov).

For additional information please visit the USDA RUS Environmental Staff website, and select "Central Electric Power Cooperative, Inc" <http://www.usda.gov/rus/water/eis/eis.htm>.

Please submit all comments by October 29, 2010.



Place  
Stamp  
Here

Lauren McGee  
1400 Independence Ave. SW  
Mail Stop 1571  
Washington, DC 20250-1571

Tape Here  
(Please do not staple)

McCellanville 115kV Transmission Line  
Public Scoping Comment Form

**We need your input!** Public participation is an essential component of the environmental review process. Please fill out the following form to ensure that the review, and ultimately the decision, considers the affected communities' opinions.

Please check the following issues of concern regarding the construction of the transmission line:

- ☒ Project purpose and need
- ☒ Visual/Aesthetic resources
- ☒ Proximity to residence
- ☒ Land use (agriculture, residential, recreation/ tourism)
- ☒ Water resources (floodplains, wetlands, river crossings)
- ☒ Biological resources (wildlife habitat, raptors, endangered species)
- ☒ Historic and cultural sites (landmarks, traditional cultural properties)
- ☒ Human health and safety (electromagnetic fields)
- ☒ Other: land value

Which of these resources are of the greatest importance within the project area, in your opinion?

Human health + safety, proximity to residence  
water resource, historical + cultural site, biological  
resources, property value.

What additional key issues should be addressed when assessing the potential impacts of the project?

The health to the future generations of human & endangered species

If you own property in one of the below proposed corridors, please indicate all the existing uses and provide the property's address:

- ☐ Agriculture/Silviculture
- ☐ Commercial
- ☐ Conservation Easement
- ☐ Industrial
- ☒ Residential
- ☐ Other: \_\_\_\_\_

Physical Address of Property:

1692 Mt Zion Ave + Powell Rd + Hwy 17

Please describe any special uses or circumstances on your property that you would like to be considered in the assessment of the project.

My property is surrounded by the wetland which is habitat to endangered species (Tule Wren, Woodpecker etc). I am concerned about the Cultural Sites.

In your opinion, was the project description, purpose, and need for the project adequately explained? If not, what additional information is needed?

I am very disappointed that the wrong address of the meeting was given out. The above was not clearly explained. Why should we ~~be~~ the environment have to loose so much for the very few. Keep in my everybody don't have or want access to the computer. My community was developed by former slaves. Please don't bring those line through this area we ~~are~~ love.

Your participation through commenting is essential throughout the entire environmental review process. If you would like to continue to receive information about the project and upcoming opportunities for participation through joining the mailing list, please check the following box and provide your mailing address.

- ☒ Yes, I would like to join the mailing list to receive information about the McClellanville transmission line project throughout its environmental review process.

Contact Information

Name: Sam + Gwen Weaving

Affiliation (Optional): \_\_\_\_\_

Mailing Address: 1692 Mt Zion Ave

City: Georgetown State: SC Zip Code: 29440

McClellanville 115kV Transmission Line  
Public Scoping Comment Form



**From:** [McGee, Lauren - Washington, DC](#)  
**To:** [John Sisson Jr.](#)  
**Cc:** [Orler, Emily - Washington, DC](#); [Bill Rogers](#); [Leon Kolankiewicz](#); [Nathalie Jacque](#)  
**Subject:** RE: McClellanville 115kV Transmission Line  
**Date:** Friday, October 29, 2010 4:15:44 PM

---

Thank for your comments. I have copied Ms. Emily Orler of RUS, Mr. Bill Rogers of Central Electric, and Mr. Leon Kolankiewicz & Ms. Nathalie Jacque of Mangi Environmental, who are tracking comments for this project. This email is now part of the official record and will be considered as the project team makes its decision. Again thank you and have a nice weekend -

Lauren McGee | Environmental Scientist  
Rural Development | Rural Utilities Service (RUS)  
U.S. Department of Agriculture  
Mail Stop 1571 | Rm 2244-S  
1400 Independence Ave, SW | Washington, DC 20250  
Phone: 202-720-1482 | Fax: 202-690-0649  
Email: [lauren.mcgee@wdc.usda.gov](mailto:lauren.mcgee@wdc.usda.gov)  
<http://www.usda.gov/rus/water/ees/envIRON.htm>

"Committed to the future of rural communities."  
"Estamos dedicados al futuro de las comunidades rurales."

-----Original Message-----

From: John Sisson Jr. [<mailto:johnsissonjr@tds.net>]  
Sent: Friday, October 29, 2010 3:27 PM  
To: McGee, Lauren - Washington, DC  
Subject: McClellanville 115kV Transmission Line

Dear Lauren,

I attended the public scoping meeting at St. James-Santee Elementary School in September and was impressed by the thoroughness of the environmental review process and of the MCS. I was, however, disappointed that the option of taking no action and/or pursuing alternative energy sources and promoting energy conservation was taken off the table. Before taking any action that will irrevocably change the natural environment in which we live, we must assess what is lost in the name of progress. When the representative of the Central Electric Power Cooperative showed a map of its' existing power transmission lines throughout South Carolina and pointed out the blank area surrounding McClellanville I thought that an indication not of a deficiency but of an asset: namely that this is one of the few remaining places in this world relatively untouched by us, where wilderness to some extent still exists. There is no doubt that electric service in this area is not as good as in others, but that is a small price to pay for the privilege of living in a place where the natural world predominates. So please bring the alternative of not building a transmission line back into the discussion.

However, if a transmission line is to be built, I would probably favor the Charity 4 corridor because it largely parallels existing infrastructure.

Thank you for taking my comments. We would like to continue receiving information about the project.

Sincerely, John H. Sisson, Jr.  
Regana C. Sisson  
971 Pinckney St.  
McClellanville, SC 29458

Thank you for your participation!

Your comments are vital to the completion of the environmental review process. Please submit this form and any additional comment letters at the meeting location, mailing to the address below, or emailing Lauren McGee of the USDA Rural Utilities Service [lauren.mcgee@wdc.usda.gov](mailto:lauren.mcgee@wdc.usda.gov).

For additional information please visit the USDA RUS Environmental Staff website, and select "Central Electric Power Cooperative, Inc" <http://www.usda.gov/rus/water/eis/eis.htm>.

Please submit all comments by October 29, 2010.



Place  
Stamp  
Here

Lauren McGee  
1400 Independence Ave. SW  
Mail Stop 1571  
Washington, DC 20250-1571

Tape Here  
(Please do not staple)

McCellanville 115kV Transmission Line  
Public Scoping Comment Form

**We need your input!** Public participation is an essential component of the environmental review process. Please fill out the following form to ensure that the review, and ultimately the decision, considers the affected communities' opinions.

Please check the following issues of concern regarding the construction of the transmission line:

- ☒ Project purpose and need
- ☒ Visual/Aesthetic resources
- ☒ Proximity to residence
- ☒ Land use (agriculture, residential, recreation/ tourism)
- ☒ Water resources (floodplains, wetlands, river crossings)
- ☒ Biological resources (wildlife habitat, raptors, endangered species)
- ☒ Historic and cultural sites (landmarks, traditional cultural properties)
- ☒ Human health and safety (electromagnetic fields)
- ☐ Other: \_\_\_\_\_

Which of these resources are of the greatest importance within the project area, in your opinion?

*Land of the project area*



What additional key issues should be addressed when assessing the potential impacts of the project?

---

---

---

---

---

---

If you own property in one of the below proposed corridors, please indicate all the existing uses and provide the property's address:

- ☐ Agriculture/Silviculture  
☐ Commercial  
☐ Conservation Easement  
☐ Industrial  
☐ Residential  
☐ Other: \_\_\_\_\_

Physical Address of Property: \_\_\_\_\_

Please describe any special uses or circumstances on your property that you would like to be considered in the assessment of the project.

*Widening of the existing Right of Way  
Along Hwy 45*

---

---

---

---

---

In your opinion, was the project description, purpose, and need in the project adequately explained? If not, what additional information is needed?

*No Not enough information  
to send 10 miles for so few  
people are*

---

---

---

---

Your participation through commenting is essential throughout the entire environmental review process. If you would like to continue to receive information about the project and upcoming opportunities for participation through joining the mailing list, please check the following box and provide your mailing address.

- ☐ Yes, I would like to join the mailing list to receive information about the McClellanville transmission line project throughout its environmental review process.

**Contact Information**

Name: \_\_\_\_\_

Affiliation (Optional): \_\_\_\_\_

Mailing Address: \_\_\_\_\_

City: \_\_\_\_\_ State: \_\_\_\_\_ Zip Code: \_\_\_\_\_

McClellanville 115kV Transmission Line  
Public Scoping Comment Form

Thank you for your participation!

Your comments are vital to the completion of the environmental review process. Please submit this form and any additional comment letters at the meeting location, mailing to the address below, or emailing Lauren McGee of the USDA Rural Utilities Service [lauren.mcgee@wdc.usda.gov](mailto:lauren.mcgee@wdc.usda.gov).

For additional information please visit the USDA RUS Environmental Staff website, and select "Central Electric Power Cooperative, Inc" <http://www.usda.gov/rus/water/ees/eis.htm>.

Please submit all comments by October 29, 2010.



Place  
Stamp  
Here

Lauren McGee  
1400 Independence Ave. SW  
Mail Stop 1571  
Washington, DC 20250-1571

Tape Here  
(Please do not staple)

**We need your input!** Public participation is an essential component of the environmental review process. Please fill out the following form to ensure that the review, and ultimately the decision, considers the affected communities' opinions.

*We don't want the line in Jamestown*

Please check the following issues of concern regarding the construction of the transmission line:

- ☒ Project purpose and need
- ☒ Visual/Aesthetic resources
- ☒ Proximity to residence
- ☒ Land use (agriculture, residential, recreation/ tourism)
- ☒ Water resources (floodplains, wetlands, river crossings)
- ☒ Biological resources (wildlife habitat, raptors, endangered species)
- ☒ Historic and cultural sites (landmarks, traditional cultural properties)
- ☒ Human health and safety (electromagnetic fields)
- ☐ Other: \_\_\_\_\_

Which of these resources are of the greatest importance within the project area, in your opinion?

*Human Health*

What additional key issues should be addressed when assessing the potential impacts of the project?

That power line is going  
to be ugly - would you want  
to live near one?

If you own property in one of the below proposed corridors, please indicate all the existing uses and provide the property's address:

- ☐ Agriculture/Silviculture
- ☐ Commercial
- ☐ Conservation Easement
- ☐ Industrial
- ☐ Residential
- ☐ Other: \_\_\_\_\_

Physical Address of Property: \_\_\_\_\_

Please describe any special uses or circumstances on your property that you would like to be considered in the assessment of the project.

\_\_\_\_\_  
\_\_\_\_\_  
\_\_\_\_\_  
\_\_\_\_\_  
\_\_\_\_\_  
\_\_\_\_\_

In your opinion, was the project description, purpose, and need for the project adequately explained? If not, what additional information is needed?

No - this people gave a  
sales pitch at the meeting -  
they didn't even let us ask  
questions

Your participation through commenting is essential throughout the entire environmental review process. If you would like to continue to receive information about the project and upcoming opportunities for participation through joining the mailing list, please check the following box and provide your mailing address.

- ☐ Yes, I would like to join the mailing list to receive information about the McClellanville transmission line project throughout its environmental review process.

**Contact Information**

Name: \_\_\_\_\_

Affiliation (Optional): \_\_\_\_\_

Mailing Address: \_\_\_\_\_

City: \_\_\_\_\_ State: \_\_\_\_\_ Zip Code: \_\_\_\_\_

McClellanville 115kV Transmission Line  
Public Scoping Comment Form

Thank you for your participation!

Your comments are vital to the completion of the environmental review process. Please submit this form and any additional comment letters at the meeting location, mailing to the address below, or emailing Lauren McGee of the USDA Rural Utilities Service [lauren.mcgee@wdc.usda.gov](mailto:lauren.mcgee@wdc.usda.gov).

For additional information please visit the USDA RUS Environmental Staff website, and select "Central Electric Power Cooperative, Inc" <http://www.usda.gov/rus/water/eis/eis.htm>.

Please submit all comments by October 29, 2010.



Lauren McGee  
1400 Independence Ave. SW  
Mail Stop 1571  
Washington, DC 20250-1571

Tape Here  
(Please do not staple)

Place  
Stamp  
Here

McCellanville 115kV Transmission Line  
Public Scoping Comment Form

**We need your input!** Public participation is an essential component of the environmental review process. Please fill out the following form to ensure that the review, and ultimately the decision, considers the affected communities' opinions.

Please check the following issues of concern regarding the construction of the transmission line:

- ☒ Project purpose and need
- ☒ Visual/Aesthetic resources
- ☒ Proximity to residence
- ☒ Land use (agriculture, residential, recreation/ tourism)
- ☒ Water resources (floodplains, wetlands, river crossings)
- ☒ Biological resources (wildlife habitat, raptors, endangered species)
- ☒ Historic and cultural sites (landmarks, traditional cultural properties)
- ☒ Human health and safety (electromagnetic fields)

☐ Other: \_\_\_\_\_

Which of these resources are of the greatest importance within the project area, in your opinion?

*Sort of agriculture recreation use*  
*the visual impact is the*  
*major*

What additional key issues should be addressed when assessing the potential impacts of the project?

*Visual effect of transmission line  
is very ugly*

If you own property in one of the below proposed corridors, please indicate all the existing uses and provide the property's address:

- ☐ Agriculture/Silviculture
- ☐ Commercial
- ☐ Conservation Easement
- ☐ Industrial
- ☐ Residential
- ☐ Other: \_\_\_\_\_

Physical Address of Property: \_\_\_\_\_

Please describe any special uses or circumstances on your property that you would like to be considered in the assessment of the project.

\_\_\_\_\_  
\_\_\_\_\_  
\_\_\_\_\_  
\_\_\_\_\_  
\_\_\_\_\_  
\_\_\_\_\_

In your opinion, was the project description, purpose, and need for the project adequately explained? If not, what additional information is needed?

*No more information is needed  
Can the expected cost of system  
for long term use of the property*

Your participation through commenting is essential throughout the entire environmental review process. If you would like to continue to receive information about the project and upcoming opportunities for participation through joining the mailing list, please check the following box and provide your mailing address.

- ☐ Yes, I would like to join the mailing list to receive information about the McClellanville transmission line project throughout its environmental review process.

**Contact Information**

Name: \_\_\_\_\_

Affiliation (Optional): \_\_\_\_\_

Mailing Address: \_\_\_\_\_

City: \_\_\_\_\_ State: \_\_\_\_\_ Zip Code: \_\_\_\_\_

McClellanville 115kV Transmission Line  
Public Scoping Comment Form

Thank you for your participation!

Your comments are vital to the completion of the environmental review process. Please submit this form and any additional comment letters at the meeting location, mailing to the address below, or emailing Lauren McGee of the USDA Rural Utilities Service [lauren.mcgee@wdc.usda.gov](mailto:lauren.mcgee@wdc.usda.gov).

For additional information please visit the USDA RUS Environmental Staff website, and select "Central Electric Power Cooperative, Inc" <http://www.usda.gov/rus/water/eis/eis.htm>.

Please submit all comments by October 29, 2010.



Lauren McGee  
1400 Independence Ave. SW  
Mail Stop 1571  
Washington, DC 20250-1571

Tape Here  
(Please do not staple)

Place  
Stamp  
Here

**McCellanville 115kV Transmission Line**  
Public Scoping Comment Form

**We need your input!** Public participation is an essential component of the environmental review process. Please fill out the following form to ensure that the review, and ultimately the decision, considers the affected communities' opinions.

Please check the following issues of concern regarding the construction of the transmission line:

- ☒ Project purpose and need
- ☒ Visual/Aesthetic resources
- ☒ Proximity to residence
- ☒ Land use (agriculture, residential, recreation/ tourism)
- ☒ Water resources (floodplains, wetlands, river crossings)
- ☒ Biological resources (wildlife habitat, raptors, endangered species)
- ☒ Historic and cultural sites (landmarks, traditional cultural properties)
- ☐ Human health and safety (electromagnetic fields)
- ☐ Other: \_\_\_\_\_

Which of these resources are of the greatest importance within the project area, in your opinion?

*Historic*

What additional key issues should be addressed when assessing the potential impacts of the project?

History + culture of area  
area will be compromised

If you own property in one of the below proposed corridors, please indicate all the existing uses and provide the property's address:

- ☐ Agriculture/Silviculture
- ☐ Commercial
- ☐ Conservation Easement
- ☐ Industrial
- ☐ Residential
- ☐ Other: \_\_\_\_\_

Physical Address of Property: \_\_\_\_\_

Please describe any special uses or circumstances on your property that you would like to be considered in the assessment of the project.

In your opinion, was the project description, purpose, and need for the project adequately explained? If not, what additional information is needed?

No - we did not get  
enough info

Your participation through commenting is essential throughout the entire environmental review process. If you would like to continue to receive information about the project and upcoming opportunities for participation through joining the mailing list, please check the following box and provide your mailing address.

- ☐ Yes, I would like to join the mailing list to receive information about the McClellanville transmission line project throughout its environmental review process.

**Contact Information**

Name: \_\_\_\_\_

Affiliation (Optional): \_\_\_\_\_

Mailing Address: \_\_\_\_\_

City: \_\_\_\_\_ State: \_\_\_\_\_ Zip Code: \_\_\_\_\_

McClellanville 115kV Transmission Line  
Public Scoping Comment Form

Thank you for your participation!

Your comments are vital to the completion of the environmental review process. Please submit this form and any additional comment letters at the meeting location, mailing to the address below, or emailing Lauren McGee of the USDA Rural Utilities Service [lauren.mcgee@wdc.usda.gov](mailto:lauren.mcgee@wdc.usda.gov).

For additional information please visit the USDA RUS Environmental Staff website, and select "Central Electric Power Cooperative, Inc" <http://www.usda.gov/rus/water/ees/eis.htm>.

Please submit all comments by October 29, 2010.



Place  
Stamp  
Here

Lauren McGee  
1400 Independence Ave. SW  
Mail Stop 1571  
Washington, DC 20250-1571

Tape Here  
(Please do not staple)

McCellanville 115kV Transmission Line  
Public Scoping Comment Form

**We need your input!** Public participation is an essential component of the environmental review process. Please fill out the following form to ensure that the review, and ultimately the decision, considers the affected communities' opinions.

*Oppose through Jamestown*

Please check the following issues of concern regarding the construction of the transmission line:

- ☒ Project purpose and need
- ☒ Visual/Aesthetic resources
- ☒ Proximity to residence
- ☒ Land use (agriculture, residential, recreation/ tourism)
- ☒ Water resources (floodplains, wetlands, river crossings)
- ☒ Biological resources (wildlife habitat, raptors, endangered species)
- ☒ Historic and cultural sites (landmarks, traditional cultural properties)
- ☒ Human health and safety (electromagnetic fields)
- ☐ Other: \_\_\_\_\_

Which of these resources are of the greatest importance within the project area, in your opinion?

---

---

---

---

---

---



What additional key issues should be addressed when assessing the potential impacts of the project?

The needs of property owners  
are being ignored.

If you own property in one of the below proposed corridors, please indicate all the existing uses and provide the property's address:

- ☐ Agriculture/Silviculture
- ☐ Commercial
- ☐ Conservation Easement
- ☐ Industrial
- ☐ Residential
- ☐ Other: \_\_\_\_\_

Physical Address of Property: \_\_\_\_\_

Please describe any special uses or circumstances on your property that you would like to be considered in the assessment of the project.

Farm land - you will cause  
me to lose money

In your opinion, was the project description, purpose, and need for the project adequately explained? If not, what additional information is needed?

No  
They only held one meeting  
and I couldn't go -

Your participation through commenting is essential throughout the entire environmental review process. If you would like to continue to receive information about the project and upcoming opportunities for participation through joining the mailing list, please check the following box and provide your mailing address.

- ☐ Yes, I would like to join the mailing list to receive information about the McClellanville transmission line project throughout its environmental review process.

**Contact Information**

Name: \_\_\_\_\_

Affiliation (Optional): \_\_\_\_\_

Mailing Address: \_\_\_\_\_

City: \_\_\_\_\_ State: \_\_\_\_\_ Zip Code: \_\_\_\_\_

McClellanville 115kV Transmission Line  
Public Scoping Comment Form

Thank you for your participation!

Your comments are vital to the completion of the environmental review process. Please submit this form and any additional comment letters at the meeting location, mailing to the address below, or emailing Lauren McGee of the USDA Rural Utilities Service [lauren.mcgee@wdc.usda.gov](mailto:lauren.mcgee@wdc.usda.gov).

For additional information please visit the USDA RUS Environmental Staff website, and select "Central Electric Power Cooperative, Inc" <http://www.usda.gov/rus/water/ees/eis.htm>.

Please submit all comments by October 29, 2010.



Place  
Stamp  
Here

Lauren McGee  
1400 Independence Ave. SW  
Mail Stop 1571  
Washington, DC 20250-1571

Tape Here  
(Please do not staple)

**McCellanville 115kV Transmission Line**  
Public Scoping Comment Form

**We need your input!** Public participation is an essential component of the environmental review process. Please fill out the following form to ensure that the review, and ultimately the decision, considers the affected communities' opinions.

Please check the following issues of concern regarding the construction of the transmission line:

- ☒ Project purpose and need
- ☒ Visual/Aesthetic resources
- ☒ Proximity to residence
- ☒ Land use (agriculture, residential, recreation/ tourism)
- ☒ Water resources (floodplains, wetlands, river crossings)
- ☒ Biological resources (wildlife habitat, raptors, endangered species)
- ☒ Historic and cultural sites (landmarks, traditional cultural properties)
- ☒ Human health and safety (electromagnetic fields)
- ☒ Other: \_\_\_\_\_

Which of these resources are of the greatest importance within the project area, in your opinion?

Land Use

What additional key issues should be addressed when assessing the potential impacts of the project?

Land Use

If you own property in one of the below proposed corridors, please indicate all the existing uses and provide the property's address:

- ☐ Agriculture/Silviculture
- ☐ Commercial
- ☐ Conservation Easement
- ☐ Industrial
- ☐ Residential
- ☒ Other: \_\_\_\_\_

Physical Address of Property: \_\_\_\_\_

Please describe any special uses or circumstances on your property that you would like to be considered in the assessment of the project.

Cause a danger to lively hood  
of families - family way of life -  
for generations to come

In your opinion, was the project description, purpose, and need for the project adequately explained? If not, what additional information is needed?

N/A

Your participation through commenting is essential throughout the entire environmental review process. If you would like to continue to receive information about the project and upcoming opportunities for participation through joining the mailing list, please check the following box and provide your mailing address.

- ☐ Yes, I would like to join the mailing list to receive information about the McClellanville transmission line project throughout its environmental review process.

**Contact Information**

Name: \_\_\_\_\_ N/A

Affiliation (Optional): \_\_\_\_\_

Mailing Address: \_\_\_\_\_

City: \_\_\_\_\_ State: \_\_\_\_\_ Zip Code: \_\_\_\_\_

McClellanville 115kV Transmission Line  
Public Scoping Comment Form

Thank you for your participation!

Your comments are vital to the completion of the environmental review process. Please submit this form and any additional comment letters at the meeting location, mailing to the address below, or emailing Lauren McGee of the USDA Rural Utilities Service [lauren.mcgee@wdc.usda.gov](mailto:lauren.mcgee@wdc.usda.gov).

For additional information please visit the USDA RUS Environmental Staff website, and select "Central Electric Power Cooperative, Inc" <http://www.usda.gov/rus/water/eis/eis.htm>.

Please submit all comments by October 29, 2010.



Lauren McGee  
1400 Independence Ave. SW  
Mail Stop 1571  
Washington, DC 20250-1571

Tape Here  
(Please do not staple)

Place  
Stamp  
Here

McCellanville 115kV Transmission Line  
Public Scoping Comment Form

**We need your input!** Public participation is an essential component of the environmental review process. Please fill out the following form to ensure that the review, and ultimately the decision, considers the affected communities' opinions.

*Oppose line going through Jamestown*

Please check the following issues of concern regarding the construction of the transmission line:

- ☒ Project purpose and need
- ☐ Visual/Aesthetic resources
- ☒ Proximity to residence
- ☒ Land use (agriculture, residential, recreation/ tourism)
- ☐ Water resources (floodplains, wetlands, river crossings)
- ☒ Biological resources (wildlife habitat, raptors, endangered species)
- ☒ Historic and cultural sites (landmarks, traditional cultural properties)
- ☐ Human health and safety (electromagnetic fields)
- ☐ Other: \_\_\_\_\_

Which of these resources are of the greatest importance within the project area, in your opinion?

*The only reason for this project  
is to service future development  
in Arvendale — and to put money  
in the pockets of Central Electric*

What additional key issues should be addressed when assessing the potential impacts of the project?

---

---

---

---

---

---

If you own property in one of the below proposed corridors, please indicate all the existing uses and provide the property's address:

- ☒ Agriculture/Silviculture  
☐ Commercial  
☐ Conservation Easement  
☐ Industrial  
☐ Residential  
☐ Other: \_\_\_\_\_

Physical Address of Property:

---

Please describe any special uses or circumstances on your property that you would like to be considered in the assessment of the project.

---

---

---

---

---

---

In your opinion, was the project description, purpose, and need for the project adequately explained? If not, what additional information is needed?

*No - just meeting*

---

---

---

---

---

---

Your participation through commenting is essential throughout the entire environmental review process. If you would like to continue to receive information about the project and upcoming opportunities for participation through joining the mailing list, please check the following box and provide your mailing address.

- ☐ Yes, I would like to join the mailing list to receive information about the McClellanville transmission line project throughout its environmental review process.

**Contact Information**

Name: \_\_\_\_\_

Affiliation (Optional): \_\_\_\_\_

Mailing Address: \_\_\_\_\_

City: \_\_\_\_\_ State: \_\_\_\_\_ Zip Code: \_\_\_\_\_

McClellanville 115kV Transmission Line  
Public Scoping Comment Form

Thank you for your participation!

Your comments are vital to the completion of the environmental review process. Please submit this form and any additional comment letters at the meeting location, mailing to the address below, or emailing Lauren McGee of the USDA Rural Utilities Service [lauren.mcgee@wdc.usda.gov](mailto:lauren.mcgee@wdc.usda.gov).

For additional information please visit the USDA RUS Environmental Staff website, and select "Central Electric Power Cooperative, Inc" <http://www.usda.gov/rus/water/ees/eis.htm>.

Please submit all comments by October 29, 2010.



Lauren McGee  
1400 Independence Ave. SW  
Mail Stop 1571  
Washington, DC 20250-1571

Tape Here  
(Please do not staple)

Place  
Stamp  
Here

McCellanville 115kV Transmission Line  
Public Scoping Comment Form

**We need your input!** Public participation is an essential component of the environmental review process. Please fill out the following form to ensure that the review, and ultimately the decision, considers the affected communities' opinions.

Please check the following issues of concern regarding the construction of the transmission line:

- ☒ Project purpose and need
- ☒ Visual/Aesthetic resources
- ☒ Proximity to residence
- ☒ Land use (agriculture, residential, recreation/ tourism)
- ☒ Water resources (floodplains, wetlands, river crossings)
- ☒ Biological resources (wildlife habitat, raptors, endangered species)
- ☒ Historic and cultural sites (landmarks, traditional cultural properties)
- ☒ Human health and safety (electromagnetic fields)
- ☐ Other: \_\_\_\_\_

Which of these resources are of the greatest importance within the project area, in your opinion?

*Project purpose + need -*  
*Clearly the McCellanville*  
*community does not have enough*  
*power outages to require this*  
*kind of project*

What additional key issues should be addressed when assessing the potential impacts of the project?

Destroy good hunting  
property

If you own property in one of the below proposed corridors, please indicate all the existing uses and provide the property's address:

- ☐ Agriculture/Silviculture
- ☐ Commercial
- ☐ Conservation Easement
- ☐ Industrial
- ☐ Residential
- ☐ Other: \_\_\_\_\_

Physical Address of Property: \_\_\_\_\_

Please describe any special uses or circumstances on your property that you would like to be considered in the assessment of the project.

\_\_\_\_\_  
\_\_\_\_\_  
\_\_\_\_\_  
\_\_\_\_\_  
\_\_\_\_\_  
\_\_\_\_\_

In your opinion, was the project description, purpose, and need for the project adequately explained? If not, what additional information is needed?

No - We don't want this  
project in Jamestown. They  
did not hold a public hearing for  
us —

Your participation through commenting is essential throughout the entire environmental review process. If you would like to continue to receive information about the project and upcoming opportunities for participation through joining the mailing list, please check the following box and provide your mailing address.

- ☐ Yes, I would like to join the mailing list to receive information about the McClellanville transmission line project throughout its environmental review process.

Contact Information

Name: \_\_\_\_\_

Affiliation (Optional): \_\_\_\_\_

Mailing Address: \_\_\_\_\_

City: \_\_\_\_\_ State: \_\_\_\_\_ Zip Code: \_\_\_\_\_

McClellanville 115kV Transmission Line  
Public Scoping Comment Form

Transcript of Central Electric Power Cooperative, Inc.

1 corridors shows the benefits and costs or risks  
2 associated with each route alternative.

3               So that's the end of my presentation.  
4 Was I going to take any questions now? I think  
5 what we were going to do at this point was give  
6 people the opportunity to continue to look around  
7 at the different stations that we have here, to  
8 come up to our court reporter and deliver oral  
9 comments if you wish her to record them, or we have  
10 comment forms in a couple of places around the room  
11 where you can write your comments down.

12               We really need to have the comments  
13 written down to formulate this record of the  
14 scoping process, and -- so we can respond to them  
15 in the EIS. The whole point of your making these  
16 comments is to allow us to decide what needs to be  
17 studied in the EIS; that is, what the scope of it  
18 is. Thank you, everyone.

19

20                               P U B L I C   C O M M E N T S

21

22               MR. ORLANDO SUTTON: My concern is I  
23 don't understand why that Mangi Environmental did  
24 not accept the national forest value plus 50.  
25 Because I recommended that -- our team recommended

Clark & Associates, Inc.  
843.762.6294



## Transcript of Central Electric Power Cooperative, Inc.

1 that on two or three different occasions. So some  
2 they accepted and some they did not. Why that was  
3 not accepted -- because based on the earlier  
4 analysis and things that we have been doing --  
5 looking at in terms of the evaluations, it had the  
6 same -- what's the word I'm looking for here,  
7 values I feel like, you know. Or even more  
8 important TPC, those other types of extrinsic  
9 values that some of those others have are plus 50.  
10 I think that it should have received plus 50.

11 MS. VIRGINIA PREVOST: My question  
12 is, our power doesn't come from Berkeley Electric  
13 or Central Electric. It comes from SCE&G. So how  
14 will all of this affect SCE&G customers? We  
15 already have a similar substation in  
16 McClellanville. Does the fact that we will have  
17 another substation in McClellanville -- will our  
18 power rates go up? We don't know. We just need  
19 clarification about the relationship with SCE&G and  
20 all of the proposed power lines and what it will do  
21 in terms of our electric power being provided. The  
22 expense as well as the environmental impacts.

23 MR. HUBERT SHULER: When they  
24 originally surveyed the lines that join my  
25 property -- when it turns and goes next to 45, we

Transcript of Central Electric Power Cooperative, Inc.

1 want to make sure that the line gets shifted all  
2 the way to the edge of our property line instead of  
3 splitting it and leaving us a separate parcel on  
4 both sides. If it goes through that way, that's  
5 the only comment. If it goes through Tagger  
6 Corner, they will see me again.

7 MR. DAVID SHULER: I have already given  
8 Lauren a -- I just want to put on the record that  
9 in July of 2006, I contacted Senator Lindsey Graham  
10 and asked a question about the substation at  
11 Jamestown because we are having so much problems  
12 with power shutdowns, coming back on line four or  
13 five hours later. He in turn contacted Mr. William  
14 Rogers, which is some big wheel at Central Electric  
15 Power Cooperative. I think he's the president or  
16 something. He agreed with me. In correspondence  
17 back to Senator Lindsey, that they -- it needed to  
18 be rebuilt or replace the substation. So that  
19 substation is going to cost around \$5.7 million  
20 based on these statements. That has not been added  
21 in with the Jamestown route. So if you add that  
22 in, the Jamestown route is over 15 million rather  
23 than 9 million. And I would just like to know why  
24 that's not been recorded anywhere in these  
25 documents showing that they need to build a new

Clark & Associates, Inc.  
843.762.6294

## Transcript of Central Electric Power Cooperative, Inc.

1 substation in Jamestown.

2 MS. VIRGINIA PREVOST: In the  
3 cultural stuff, there's no consideration of the  
4 existing portion of the Old King's Highway, which  
5 is still dirt. And that needs to be looked at as a  
6 cultural, slash, historical consideration. And it  
7 runs from Hampton Plantation down to 45 and  
8 actually crosses 45 and comes back out on Highway  
9 17 South right around the school here, right around  
10 St. James Santee School. And that's all dirt.  
11 It's part of the original King's Highway that used  
12 to go all the way from Washington, DC to who knows  
13 where, and it needs to be looked at for cultural  
14 resource.

15 MS. DONNA SHULER-RODIN: I just  
16 want to say I am not in favor of it coming from  
17 Jamestown. I think that's too far, and it's twice  
18 the land as some of the other places. That's mine.

19 MS. LAWTONETTE GASKINS: It makes  
20 more sense to go down 17 because they already have  
21 that access. The lines are already there.

22 MS. DONNA SHULER-RODIN: And I  
23 second that, too.

24 MS. LAWTONETTE GASKINS: There are  
25 existing right-of-ways, and, you know, it's

Clark & Associates, Inc.  
843.762.6294

Transcript of Central Electric Power Cooperative, Inc.

1 straighter. Looks like it would be a better idea  
2 all the way around. But I don't live there, so --

3 MR. CLIFFORD BYE: I want to know  
4 why they are not following the existing Charity  
5 power line going to Honey Hill instead of selecting  
6 other corridors to go to. It can't possibly have  
7 the same impact if -- even if you condemned another  
8 50 feet on the existing power line to where it  
9 would not impact less land than what they're doing  
10 by taking a new route -- or a highway, any highway,  
11 but not across private land and across national  
12 forest and everything else. There is an existing  
13 Santee Cooper right-of-way, all they need to do is  
14 follow that line.

15 (The meeting was concluded at  
16 9:00 p.m.)

17  
18  
19  
20  
21  
22  
23  
24  
25

Transcript of Central Electric Power Cooperative, Inc.


REPORTER'S CERTIFICATE

1  
2  
3  
4  
5  
6  
7  
8  
9  
10  
11  
12  
13  
14  
15  
16  
17  
18  
19  
20  
21  
22  
23  
24  
25

I, DARAH L. NEKOLA, Registered Professional Reporter and Notary Public in and for the State of South Carolina at Large, do hereby certify that I correctly reported the within-entitled matter and that the foregoing is a full, true and correct transcription of my shorthand notes of the testimony and/or other oral proceedings had in the said matter.

I further certify that I am neither related to nor counsel for any party to the cause pending or interested in the events thereof.

Witness my hand, I have hereunto affixed my official seal this 4th day of October, 2010, at Charleston, Charleston County, South Carolina.

  
DARAH L. NEKOLA

Registered Professional

Reporter

My commission expires 1/7/2018

**Thank you for your participation!**

Your comments are vital to the completion of the environmental review process. Please submit this form and any additional comment letters at the meeting location, mailing to the address below, or emailing Lauren McGee of the USDA Rural Utilities Service [lauren.mcgee@wdc.usda.gov](mailto:lauren.mcgee@wdc.usda.gov).

For additional information please visit the USDA RUS Environmental Staff website, and select "Central Electric Power Cooperative, Inc" <http://www.usda.gov/rus/water/ees/eis.htm>.

Please submit all comments by October 29, 2010.



CHARLESTON SC 294

10:10 PM 2 T



Lauren McGee  
1400 Independence Ave. SW  
Mail Stop 1571  
Washington, DC 20250-1571

Tape Here  
(Please do not staple)

20250-1571



**McCellanville 115kV Transmission Line  
Public Scoping Comment Form**

**We need your input!** Public participation is an essential component of the environmental review process. Please fill out the following form to ensure that the review, and ultimately the decision, considers the affected communities' opinions.

Please check the following issues of concern regarding the construction of the transmission line:

- ☒ Project purpose and need
- ☒ Visual/Aesthetic resources
- ☐ Proximity to residence
- ☒ Land use (agriculture, residential, recreation/ tourism)
- ☒ Water resources (floodplains, wetlands, river crossings)
- ☒ Biological resources (wildlife habitat, raptors, endangered species)
- ☐ Historic and cultural sites (landmarks, traditional cultural properties)
- ☐ Human health and safety (electromagnetic fields)
- ☒ Other: Natural Ecological Communities

Which of these resources are of the greatest importance within the project area, in your opinion?

Other: Natural Ecological Communities. This is a specific component of "Biological Resources" that would consider all important ecosystems not just wetlands and endangered species and in particular do more to protect the Francis Marion National Forest, presently degraded by Central Electric ROWs.

What additional key issues should be addressed when assessing the potential impacts of the project?

Minimize environmental degradation by selecting construction of self contained McClellanville substation. Investigate Central Electric/Berkley Electric (BE) political influence in this matter on local residents, in particular residents of Awendaw. BE essentially runs Awendaw and is coercing residents even in area churches to sign petition in support of transmission line which they do not understand and will not benefit from.

If you own property in one of the below proposed corridors, please indicate all the existing uses and provide the property's address:

- ☒ Agriculture/Silviculture
- ☐ Commercial
- ☒ Conservation Easement
- ☐ Industrial
- ☒ Residential
- ☐ Other: \_\_\_\_\_

Physical Address of Property:

600 Flatfield Farm Rd, Awendaw, SC 29429

Please describe any special uses or circumstances on your property that you would like to be considered in the assessment of the project.

My current BE electrical service is excellent.

In your opinion, was the project description, purpose, and need for the project adequately explained? If not, what additional information is needed?

Well explained in general,

Explanation of funding, in particular "no cost to you" scenario, evasive, deceptive, and unacceptable.

Your participation through commenting is essential throughout the entire environmental review process. If you would like to continue to receive information about the project and upcoming opportunities for participation through joining the mailing list, please check the following box and provide your mailing address.

- ☒ Yes, I would like to join the mailing list to receive information about the McClellanville transmission line project throughout its environmental review process.

Contact Information

Name: John A. Brubaker

Affiliation (Optional):

Mailing Address: 600 Flatfield Farm Rd.

City: Awendaw State: SC Zip Code: 29429

McClellanville 115kV Transmission Line  
Public Scoping Comment Form

**Orler, Emily - Washington, DC**

---

**From:** brubakerj tds.net [brubakerj@tds.net]  
**Sent:** Wednesday, October 27, 2010 9:42 PM  
**To:** McGee, Lauren - Washington, DC  
**Subject:** Comment, McClellanville 115kV Transmission Line  
**Attachments:** JB\_McGee\_102710.doc; FLbay\_102610\_2.jpg

Public Scoping Comment, McClellanville 115kV Transmission Line below and attached w/supporting photo.

Dear Ms. McGee:

Please consider the following comments regarding the proposed McClellanville 115kV Transmission line.

None of the Alternative Transmission Line Route Corridors under consideration are acceptable. Although dismissed as too costly, I contend that if the Purpose and Need to have more reliable electrical service provided by Berkeley Electric to a few hundred residents of the small rural community of McClellanville is justified, the only affordable alternative is the establishment of an on-site generating plant. That may not presently be estimated as the lowest cost alternative in dollars, but when values are attached to specific components of the area's natural and historical heritage and social justice issues the cost of the proposed corridors skyrocket far beyond the costs presently assigned to them.

Although much of their data is dated, Mangi Environmental Group, Inc. appropriately describes the area's natural and historical heritage in their "Macro-Corridor Study Report" and "2007 Summary Report/Environmental Decision" prepared for Central Electric Power Cooperative (CEPCI) and USDA Rural Development – Utilities Programs (RUS). It is appreciated that RUS confirms the sensitive nature of the area and has elevated the required study from an EA to an EIS. It is inconsistent, however, that the study weights important environmental and cultural elements, i.e. Endangered Species, in considering corridor alternatives, however, no dollar value is assigned the demise of those elements in the cost analysis. In fact the richest wetlands are assigned the lowest property value. Failing to appropriately assign values to and include those values in the tally are the fatal flaw of the documents noted above. This is the Seewee to Santee Corridor. This is a Class I air and water quality environ surrounded by the Francis Marion National Forest, Cape Romain National Wildlife Refuge, Santee Coastal Reserve, and the Santee River and its delta. The values of the corridor are in its natural and cultural heritage, not the reliability of common amenities like electricity.

CEPCI has existing power line corridors through the Francis Marion National Forest (FMNF). These corridors already give CEPCI license to significant acreage in the FMNF which, unfortunately, are generally degraded in comparison to adjacent systems. They constitute attractive nuisances illegally frequented by ATV riders who seem to delight in turning important wetlands that occur throughout into mud holes. Please see the attached recent photo of one of those wetlands near Florida Bay just east of Halfway Creek Road. This was a breeding site for Gopher Frogs (*Rana areolata*), a species of federal concern, and considered by many to be the most magnificent pitcher plant bog in the FMNF. As the photograph shows, it's been destroyed, and could likely not be restored even if the ATV menace that did the damage could be abated. The USDA Forest Service does not have a law enforcement staff to police these corridors, and CEPCI has shown no interest in fencing, gating, or otherwise securing and patrolling those existing corridors through this rare and important ecosystem. USDA Forest Service maintenance is compromised by CEPCI in other ways. The FMNF is a fire dependant ecosystem. If necessary prescribed fires managed by the Forest Service inadvertently damage a CEPCI power pole, the Forest Service is obliged to pay many thousands of dollars in restitution. Clearly, CEPCI corridors have proved to be incompatible with this important natural resource. Existing corridors might be reassessed. No additional corridors should be considered.



Is it possible that the Purpose and Need for this improved service could be satisfied by individual emergency generators for the few households that desire it for a fraction of the requested millions of dollars of public funds? Should your decision be to move forward with this extravagant RUS funding for a transmission line, then the only possible route would be to run it in the existing SCE&G ROW along Seewee Road. That route is not among the corridors presently under consideration, but it should be at the top of the list.

There is a consideration that might fall under environmental justice associated with this review. In the opinion of many, Berkeley Electric wields extraordinary political power over Awendaw political affairs. That is relevant to this issue in that at least one Berkeley Electric official has been soliciting signatures or letters of support from Awendaw residents, reportedly at area churches in particular, who have little if any understanding of the issue. Our electrical service in Awendaw is quite satisfactory, and this new loop is not intended to improve it. RUS needs to be aware of the reason so many Awendaw residents have signed-on in support of a new Central Electric corridor, but one that is NIMBY.

Thank you for taking the time to consider my concerns.

Sincerely,

John A. Brubaker  
600 Flatfield Farm Road  
Awendaw, SC 29429  
(843) 928-4001  
[brubakerj@tds.net](mailto:brubakerj@tds.net)

John A. Brubaker  
600 Flatfield Farm Road  
Awendaw, SC 29429  
(843) 928-4001  
[brubakerj@tds.net](mailto:brubakerj@tds.net)

October 27, 2010

Lauren McGee  
1400 Independence Ave. SW  
Mail Stop 1571  
Washington, DC 20250-1571  
[lauren.mcgee@wdc.usda.gov](mailto:lauren.mcgee@wdc.usda.gov)

**RE: Public Scoping Comment, McClellanville 115kV Transmission Line**

Dear Ms. McGee:

Please consider the following comments regarding the proposed McClellanville 115kV Transmission line.

None of the Alternative Transmission Line Route Corridors under consideration are acceptable. Although dismissed as too costly, I contend that if the Purpose and Need to have more reliable electrical service provided by Berkeley Electric to a few hundred residents of the small rural community of McClellanville is justified, the only affordable alternative is the establishment of an on-site generating plant. That may not presently be estimated as the lowest cost alternative in dollars, but when values are attached to specific components of the area's natural and historical heritage and social justice issues the cost of the proposed corridors skyrocket far beyond the costs presently assigned to them.

Although much of their data is dated, Mangi Environmental Group, Inc. appropriately describes the area's natural and historical heritage in their "Macro-Corridor Study Report" and "2007 Summary Report/Environmental Decision" prepared for Central Electric Power Cooperative (CEPCI) and USDA Rural Development – Utilities Programs (RUS). It is appreciated that RUS confirms the sensitive nature of the area and has elevated the required study from an EA to an EIS. It is inconsistent, however, that the study weights important environmental and cultural elements, i.e. Endangered Species, in considering corridor alternatives, however, no dollar value is assigned the demise of those elements in the cost analysis. In fact the richest wetlands are assigned the lowest property value. Failing to appropriately assign values to and include those values in the tally are the fatal flaw of the documents noted above. This is the Seewee to Santee Corridor. This is a Class I air and water quality environ surrounded by the Francis Marion National Forest, Cape Romain National Wildlife Refuge, Santee Coastal Reserve, and the Santee River and its delta. The values of the corridor are in its natural and cultural heritage, not the reliability of common amenities like electricity.

CEPCI has existing power line corridors through the Francis Marion National Forest (FMNF). These corridors already give CEPCI license to significant acreage in the FMNF which, unfortunately, are generally degraded in comparison to adjacent systems. They constitute attractive nuisances illegally frequented by ATV riders who seem to delight in turning important wetlands that occur throughout into mud holes. Please see the attached recent photo of one of those wetlands near Florida Bay just east of Halfway Creek Road. This was a breeding site for Gopher Frogs (*Rana areolata*), a species of federal concern, and considered by many to be the most magnificent pitcher plant bog in the FMNF. As the photograph shows, it's been destroyed, and could likely not be restored even if the ATV menace that did the damage could be abated. The USDA Forest Service does not have a law enforcement staff to police these corridors, and CEPCI has shown no interest in fencing, gating, or otherwise securing and patrolling those existing corridors through this rare and important ecosystem. USDA Forest Service maintenance is compromised by CEPCI in other ways. The FMNF is a fire dependant ecosystem. If necessary prescribed fires managed by the Forest Service inadvertently damage a CEPCI power pole, the Forest Service is obliged to pay many thousands of dollars in restitution. Clearly, CEPCI corridors have proved to be incompatible with this important natural resource. Existing corridors might be reassessed. No additional corridors should be considered.

Is it possible that the Purpose and Need for this improved service could be satisfied by individual emergency generators for the few households that desire it for a fraction of the requested millions of dollars of public funds? Should your decision be to move forward with this extravagant RUS funding for a transmission line, then the only possible route would be to run it in the existing SCE&G ROW along Seewee Road. That route is not among the corridors presently under consideration, but it should be at the top of the list.

There is a consideration that might fall under environmental justice associated with this review. In the opinion of many, Berkeley Electric wields extraordinary political power over Awendaw political affairs. That is relevant to this issue in that at least one Berkeley Electric official has been soliciting signatures or letters of support from Awendaw residents, reportedly at area churches in particular, who have little if any understanding of the issue. Our electrical service in Awendaw is quite satisfactory, and this new loop is not intended to improve it. RUS needs to be aware of the reason so many Awendaw residents have signed-on in support of a new Central Electric corridor, but one that is NIMBY.

Thank you for taking the time to consider my concerns.

Sincerely,

John A. Brubaker



