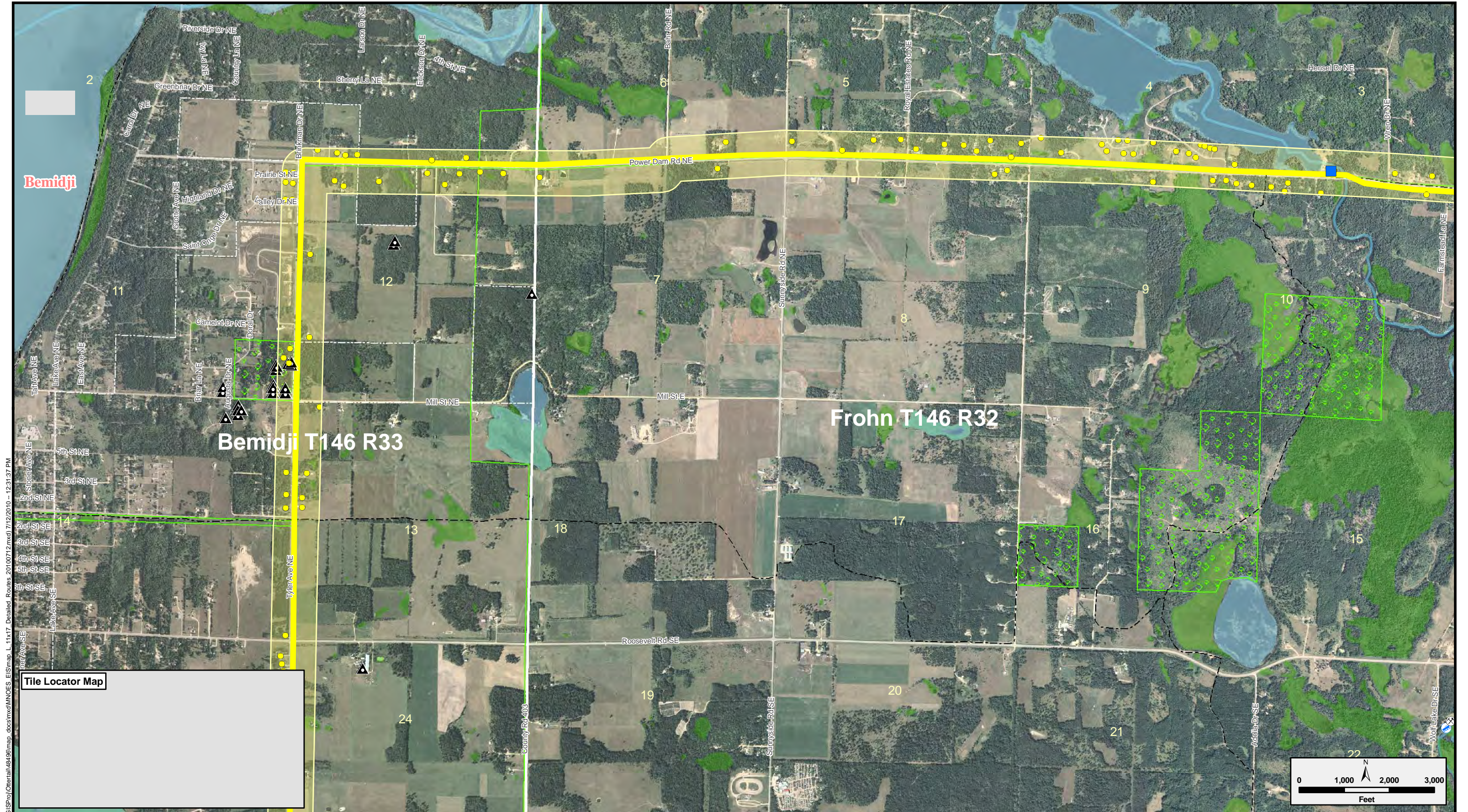


Map Document: (\\npa-gis-fila\GISProj\Cherrail\48496map.docx\mxd\MOES\_EIS\map\_L\_11x17\_Detailed\_Routes\_20100712.mxd) 7/12/2010 - 12:31:37 PM



Map Document: (\\nsps-gis-fila\GISProj\Chertail\48496\map\_docs\mxd\MNOES\_EIS\map\_L\_1x17\_Detailed\_Routes\_20100712.mxd) 7/12/2010 -- 12:31:37 PM



#### Route Alternatives

- Route 1
- Route 2
- Route 3
- Route 4
- Alternate Route Segment

#### Route ROW Alternatives

- Route 1
- Route 2
- Route 3
- Route 4

- Project Endpoints
- Breaker Station
- Proposed Substation

#### Existing Transmission Lines

- 69 kV
- 115 kV
- 230 kV

- Leach Lake Reservation
- Proposed Pipelines
- Existing Pipeline
- Communication Tower
- Existing Substation

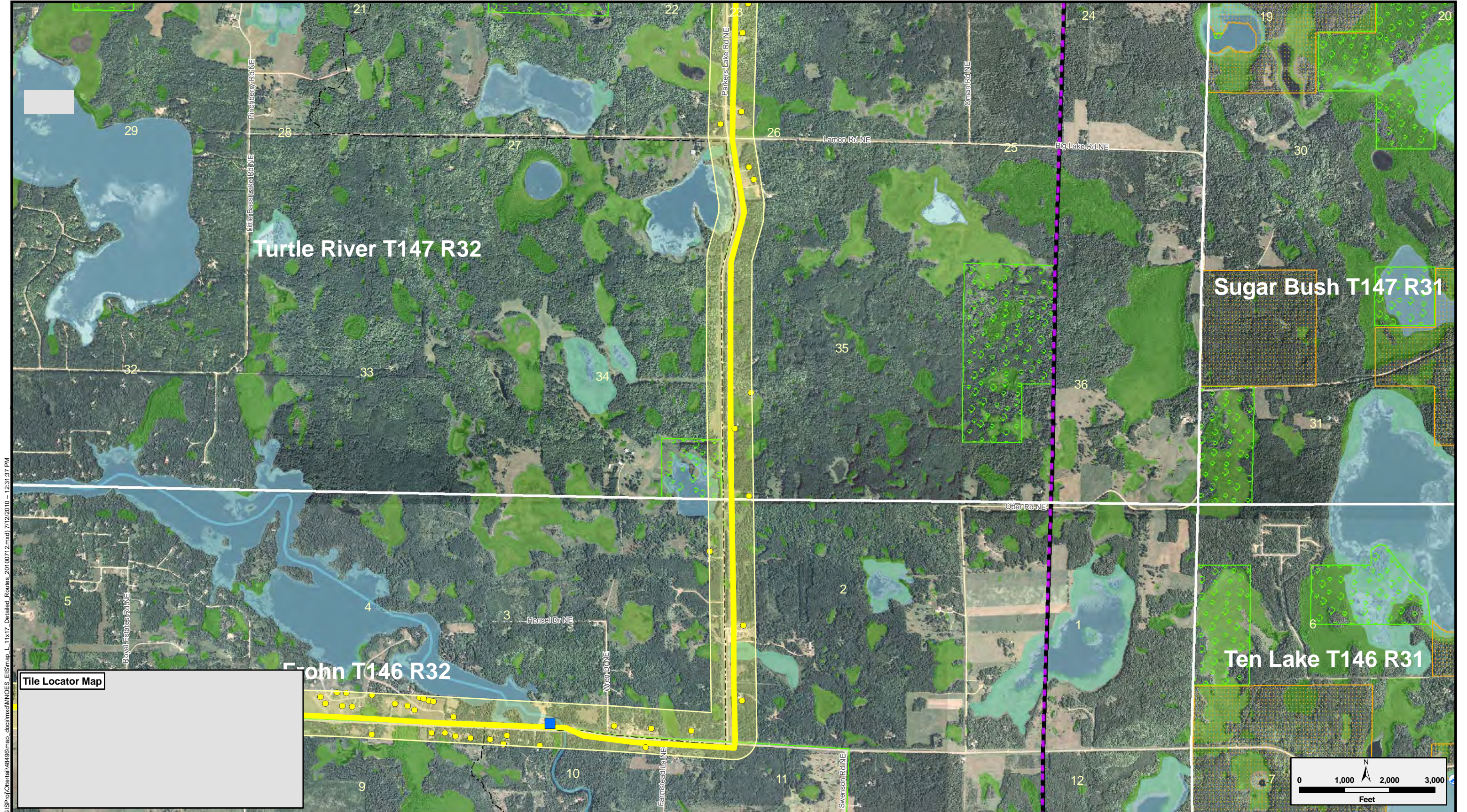
#### Natural Resource Areas

- Wildlife Management Area
- Chippewa National Forest
- MN State Forest
- MN DNR SNA

#### Hydrology

- NWI Wetland
- PWI Wetland
- PWI Stream

- Snowmobile
- Recreational Trails
- Water Access
- Residence
- Gravel Pit



Map Document: (\\nps-gis-fila\GIS\proj\Cherrail\48496\map\_docs\mxd\MNOES\_EIS\map\_L\_1x17\_Detailed\_Routes\_20100712.mxd) 7/12/2010 -- 12:31:37 PM

Tile Locator Map



Route Alternatives

- Route 1
- Route 2
- Route 3
- Route 4
- Alternate Route Segment

Route ROW Alternatives

- Route 1
- Route 2
- Route 3
- Route 4

- Project Endpoints
- Breaker Station
- Proposed Substation

Existing Transmission Lines

- 69 kV
- 115 kV
- 230 kV

- Leech Lake Reservation
- Proposed Pipelines
- Existing Pipeline
- Communication Tower
- Existing Substation

Natural Resource Areas

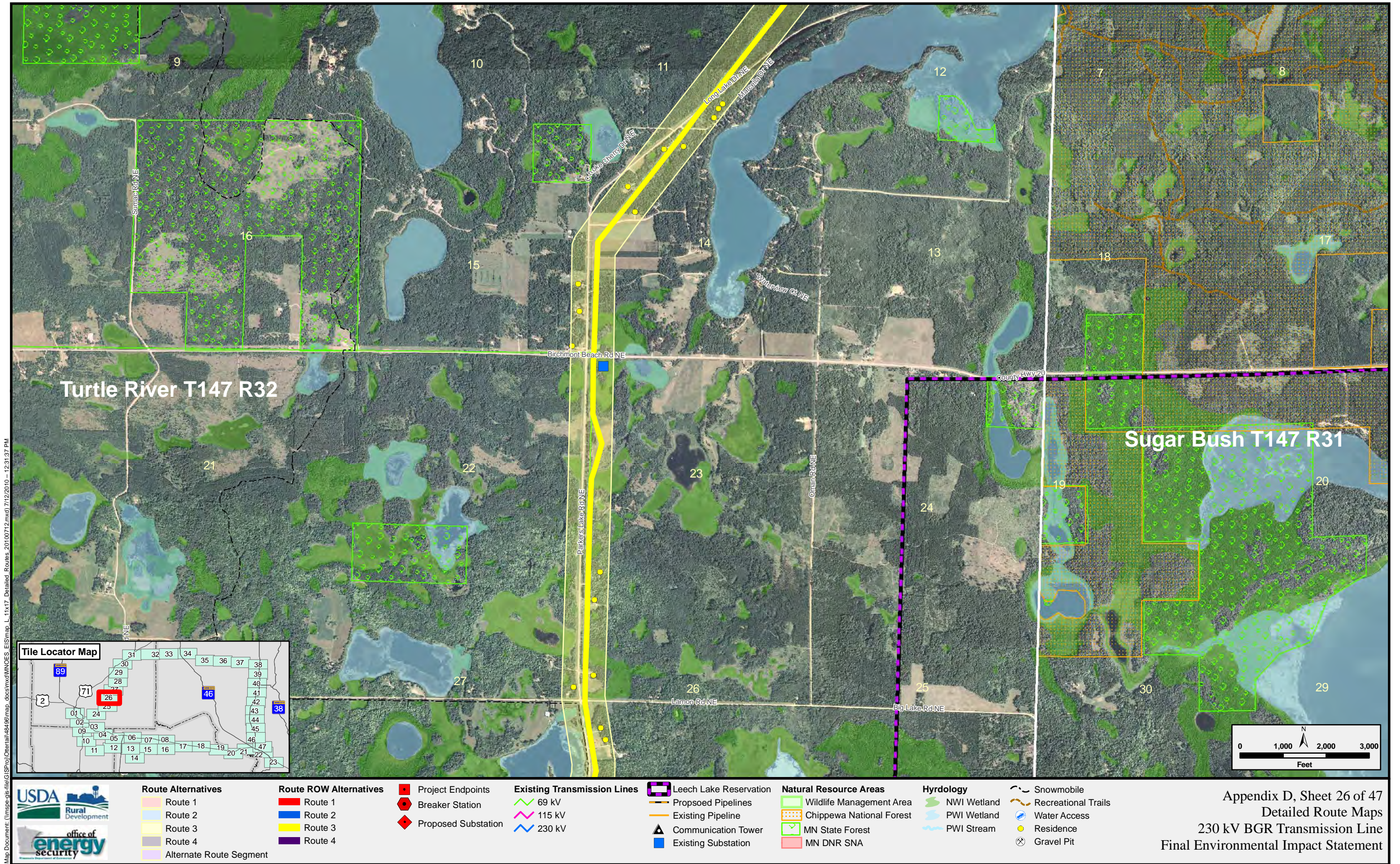
- Wildlife Management Area
- Chippewa National Forest
- MN State Forest
- MN DNR SNA

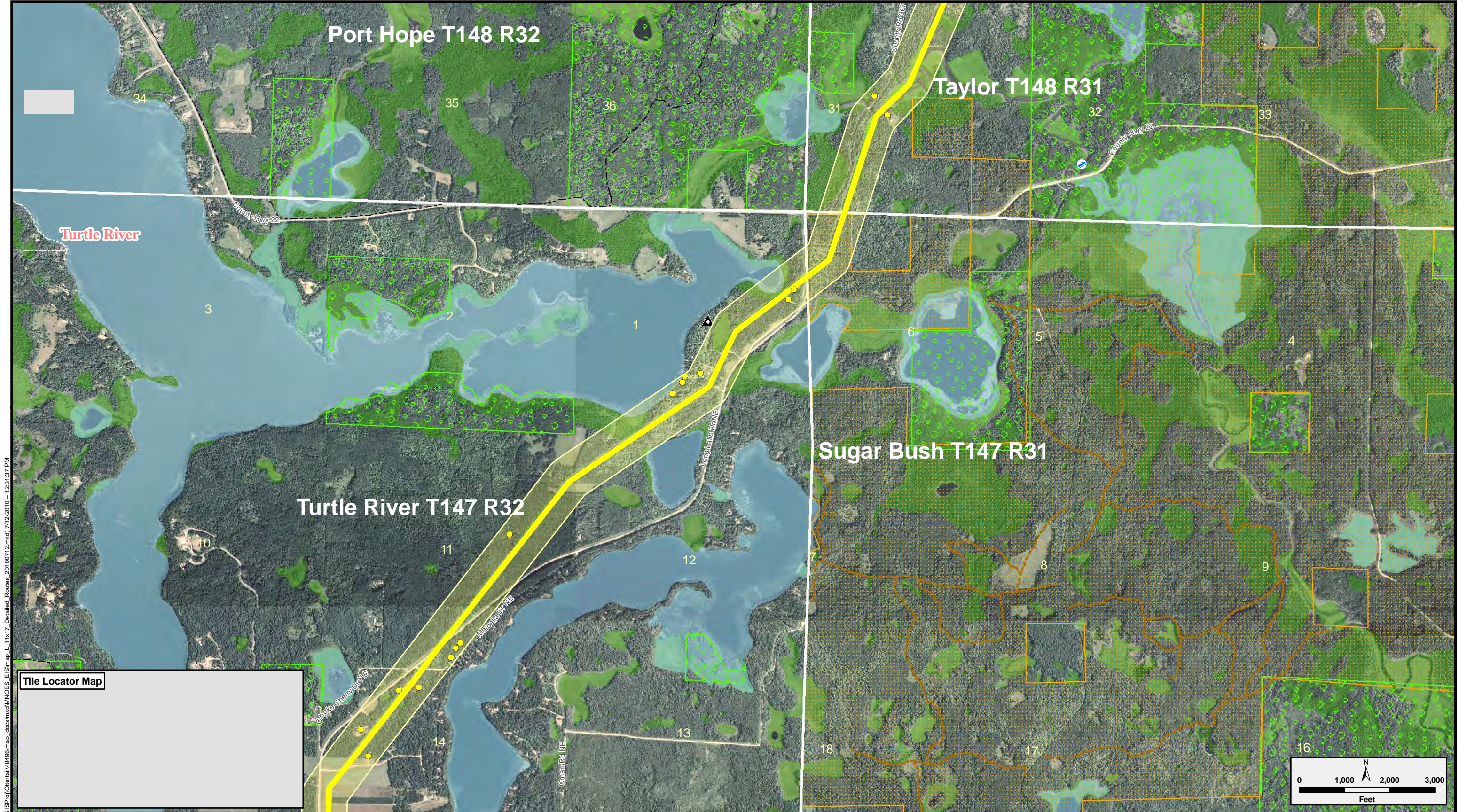
Hydrology

- NWI Wetland
- PWI Wetland
- PWI Stream

- Snowmobile
- Recreational Trails
- Water Access
- Residence
- Gravel Pit

Map Document: (\\usgs-gis-fila\GIS\proj\Cherrail\48496\map\_docs\mxd\MNOES\_EIS\map\_L\_1x17\_Detailed\_Routes\_20100712.mxd) 7/12/2010 - 12:31:37 PM





Map Document: (\\usps-gis-fila\GISProj\Chertail\48496\map\_docs\mxd\MNOES\_EIS\map\_L\_1x17\_Detailed\_Routes\_20100712.mxd) 7/12/2010 - 12:31:37 PM

Tile Locator Map



**Route Alternatives**

- Route 1
- Route 2
- Route 3
- Route 4
- Alternate Route Segment

**Route ROW Alternatives**

- Route 1
- Route 2
- Route 3
- Route 4

- Project Endpoints
- Breaker Station
- Proposed Substation

**Existing Transmission Lines**

- 69 kV
- 115 kV
- 230 kV

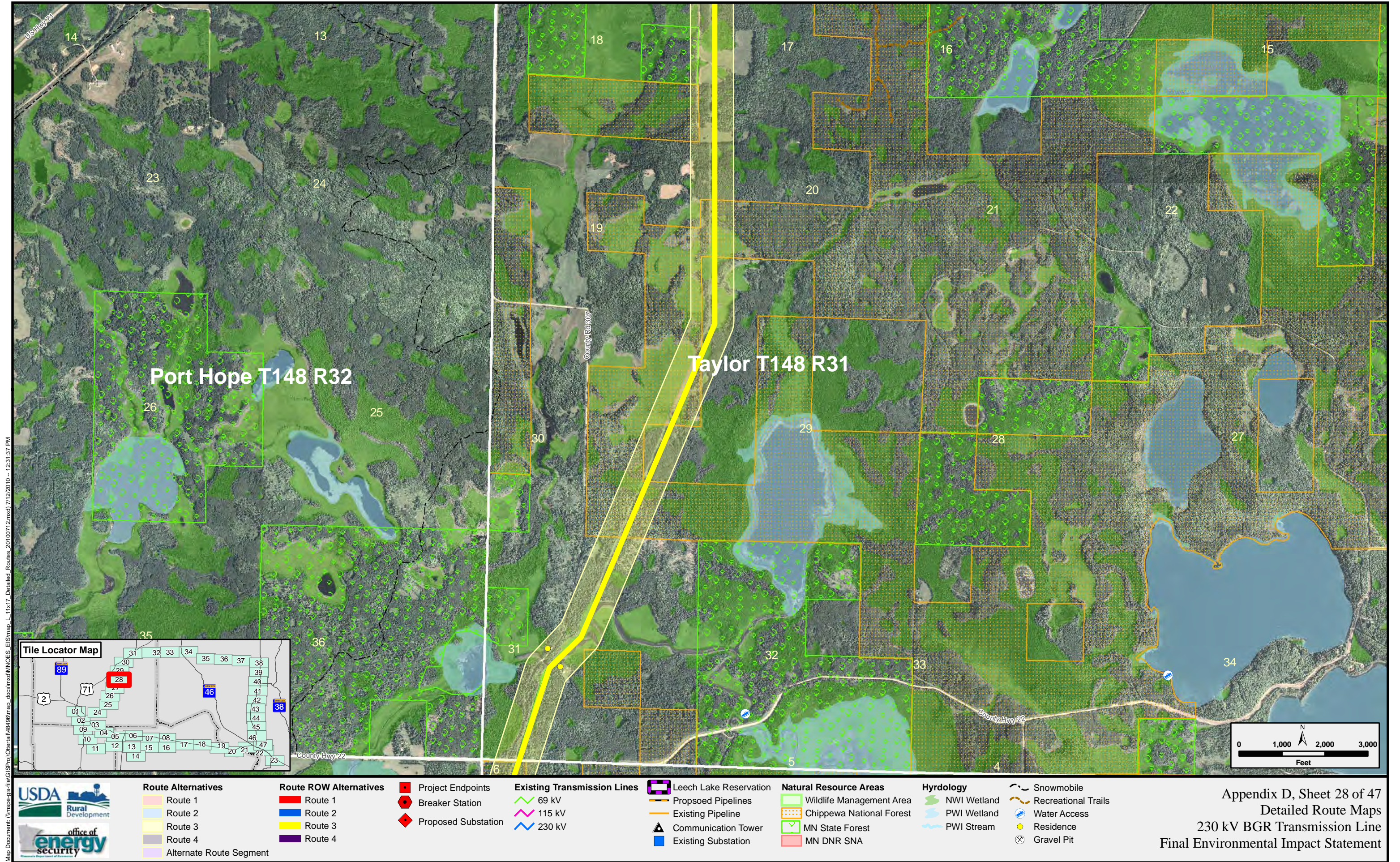
- Leach Lake Reservation
- Proposed Pipelines
- Existing Pipeline
- Communication Tower
- Existing Substation

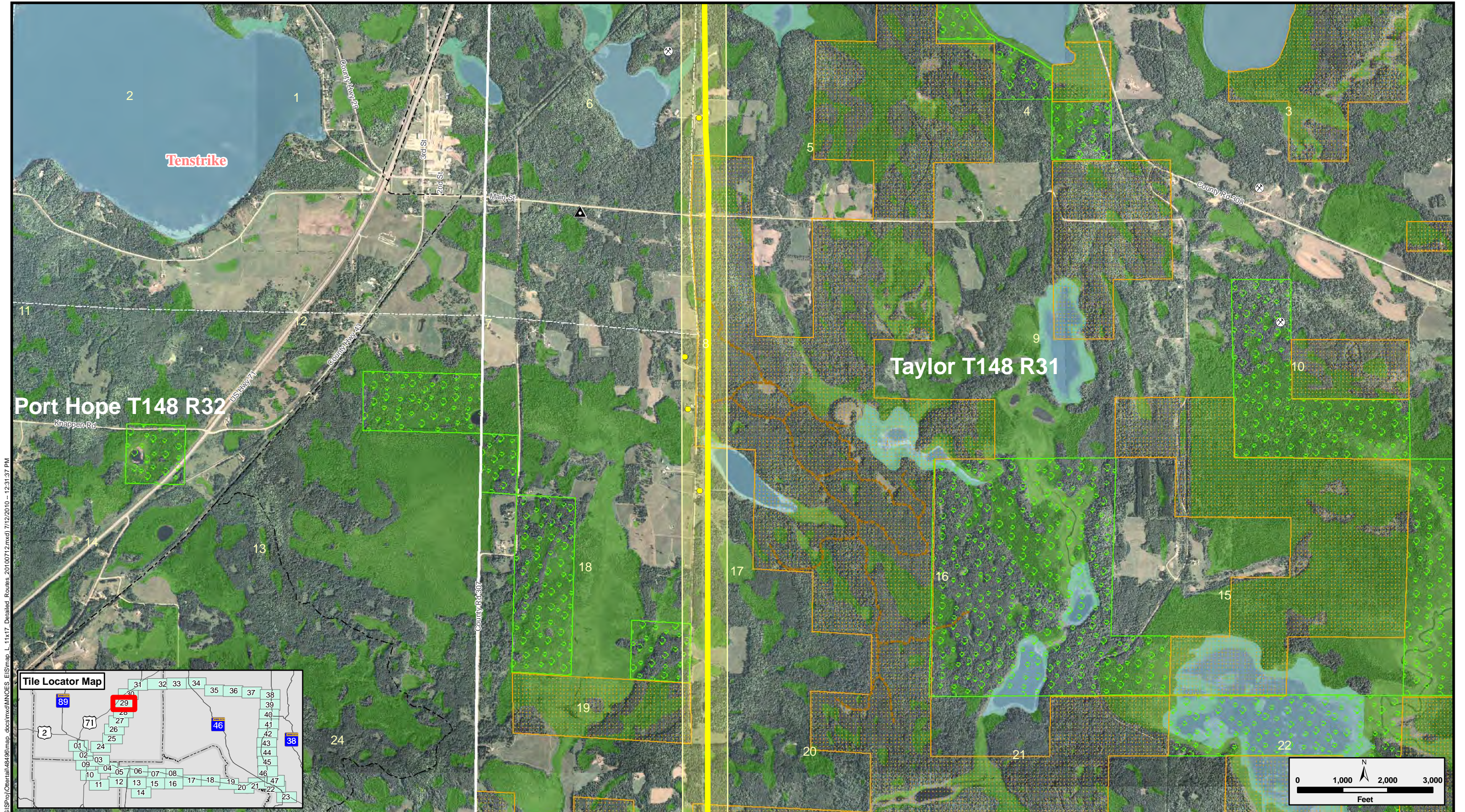
- Natural Resource Areas
- Wildlife Management Area
- Chippewa National Forest
- MN State Forest
- MN DNR SNA

**Hydrology**

- NWI Wetland
- PWI Wetland
- PWI Stream

- Snowmobile
- Recreational Trails
- Water Access
- Residence
- Gravel Pit





Map Document: \\nps-gis-fila\GISProj\Chertail\48496map.docx\mxd\MNOES\_EIS\Map\_L\_1x17\_Detailed\_Routes\_20100712.mxd 7/12/2010 - 12:31:37 PM



#### Route Alternatives

- Route 1
- Route 2
- Route 3
- Route 4
- Alternate Route Segment

#### Route ROW Alternatives

- Route 1
- Route 2
- Route 3
- Route 4

- Project Endpoints
- Breaker Station
- Proposed Substation

#### Existing Transmission Lines

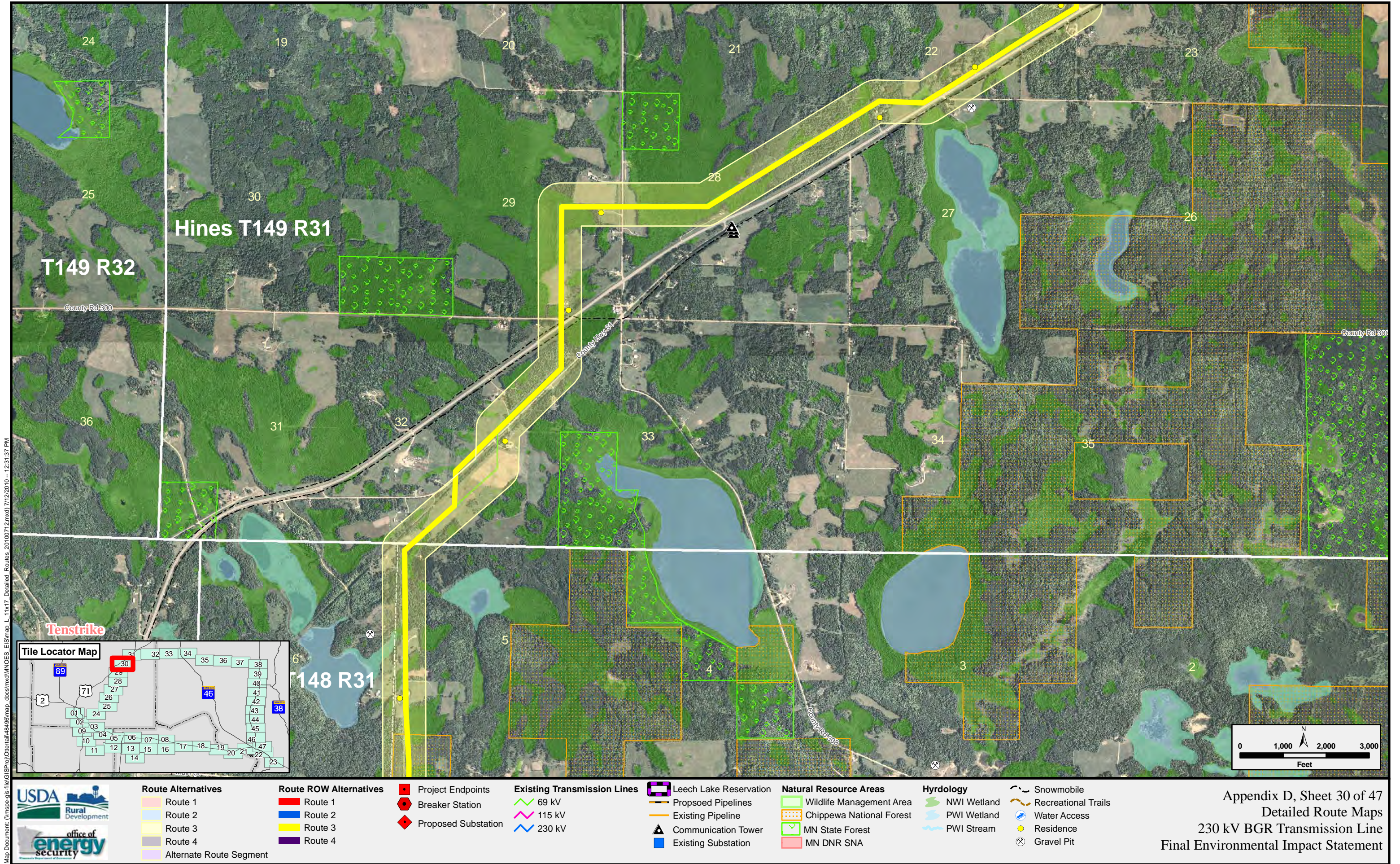
- 69 kV
- 115 kV
- 230 kV

- Leach Lake Reservation
- Proposed Pipelines
- Existing Pipeline
- Communication Tower
- Existing Substation

- Natural Resource Areas
- Wildlife Management Area
- Chippewa National Forest
- MN State Forest
- MN DNR SNA

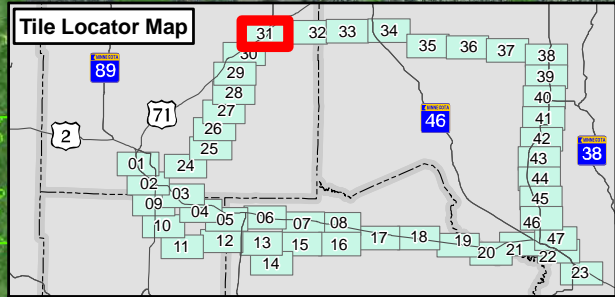
- Hydrology
- NWI Wetland
- PWI Wetland
- PWI Stream



- Snowmobile
- Recreational Trails
- Water Access
- Residence
- Gravel Pit





Map Document: (\\npa-gis-fila\GISProj\Chertail\48496map.docx\mxd\MOES EIS\map\_L\_1x177\_Details Routes 20100712.mxd) 7/12/2010 - 12:31:37 PM





**Route Alternatives**

- Route 1
- Route 2
- Route 3
- Route 4
- Alternate Route Segment

**Route ROW Alternatives**

- Route 1
- Route 2
- Route 3
- Route 4

**Project Endpoints**

- Breaker Station
- Proposed Substation

**Existing Transmission Lines**

- 69 kV
- 115 kV
- 230 kV

**Leach Lake Reservation**

- Proposed Pipelines
- Existing Pipeline

**Communication Tower**

- Existing Substation

**Natural Resource Areas**

- Wildlife Management Area
- Chippewa National Forest
- MN State Forest
- MN DNR SNA

**Hydrology**

- NWI Wetland
- PWI Wetland
- PWI Stream

**Snowmobile**

- Recreational Trails
- Water Access
- Residence
- Gravel Pit

Appendix D, Sheet 31 of 47  
Detailed Route Maps  
230 kV BGR Transmission Line  
Final Environmental Impact Statement



Map Document: (\\npa-gis-fila\GIS\proj\Chertail\48496\map.docx\mxd\MOES\_EIS\map\_L\_1x177\_Details\_Routes\_20100712.mxd) 7/12/2010 - 12:31:37 PM



#### Route Alternatives

- Route 1
- Route 2
- Route 3
- Route 4
- Alternate Route Segment

#### Route ROW Alternatives

- Route 1
- Route 2
- Route 3
- Route 4

- Project Endpoints
- Breaker Station
- Proposed Substation

#### Existing Transmission Lines

- 69 kV
- 115 kV
- 230 kV

- Leach Lake Reservation
- Proposed Pipelines
- Existing Pipeline
- Communication Tower
- Existing Substation

#### Natural Resource Areas

- Wildlife Management Area
- Chippewa National Forest
- MN State Forest
- MN DNR SNA

#### Hydrology

- NWI Wetland
- PWI Wetland
- PWI Stream

- Snowmobile
- Recreational Trails
- Water Access
- Residence
- Gravel Pit



Map Document: (\\npa-gis-fila\GISProj\Chertall\48496\map\_docs\mxd\MNOES\_EIS\map\_L\_1x177\_Detailed\_Routes\_20100712.mxd) 7/12/2010 -- 12:31:37 PM



**Route Alternatives**

- Route 1
- Route 2
- Route 3
- Route 4
- Alternate Route Segment

**Route ROW Alternatives**

- Route 1
- Route 2
- Route 3
- Route 4

- Project Endpoints
- Breaker Station
- Proposed Substation

**Existing Transmission Lines**

- 69 kV
- 115 kV
- 230 kV

- Leech Lake Reservation
- Proposed Pipelines
- Existing Pipeline
- Communication Tower
- Existing Substation

**Natural Resource Areas**

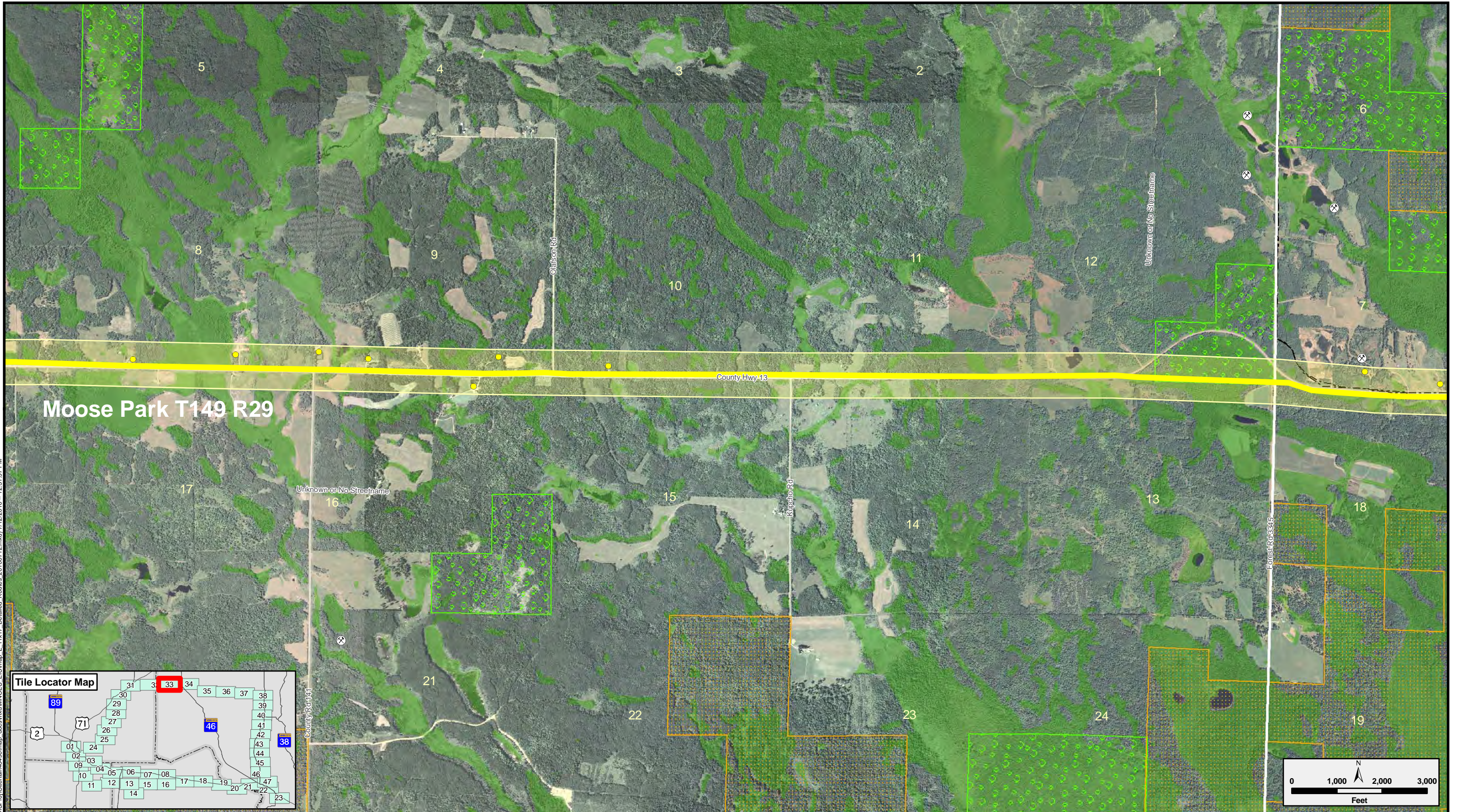
- Wildlife Management Area
- Chippewa National Forest
- MN State Forest
- MN DNR SNA

**Hyrdology**

- NWI Wetland
- PWI Wetland
- PWI Stream

- Snowmobile
- Recreational Trails
- Water Access
- Residence
- Gravel Pit

Map Document: (\\nps-gis-fila\GIS\proj\Cherrail\48496\map\_docs\mxd\MNOES\_EIS\map\_L\_1x17\_Detailed\_Routes\_20100712.mxd) 7/12/2010 -- 12:31:37 PM



**Route Alternatives**

- Route 1
- Route 2
- Route 3
- Route 4
- Alternate Route Segment

**Route ROW Alternatives**

- Route 1
- Route 2
- Route 3
- Route 4

- Project Endpoints
- Breaker Station
- Proposed Substation

**Existing Transmission Lines**

- 69 kV
- 115 kV
- 230 kV

- Leech Lake Reservation
- Proposed Pipelines
- Existing Pipeline
- Communication Tower
- Existing Substation

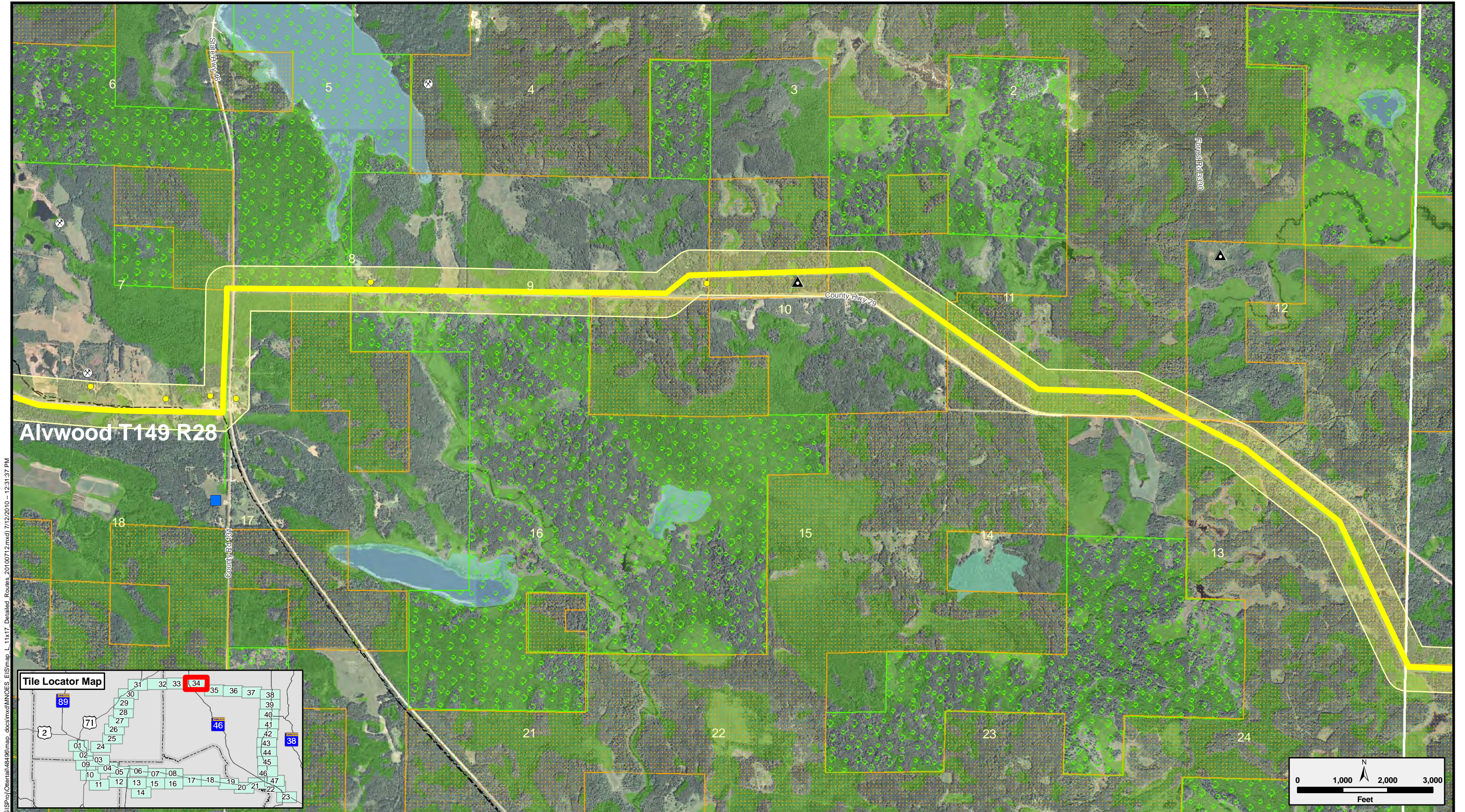
**Natural Resource Areas**

- Wildlife Management Area
- Chippewa National Forest
- MN State Forest
- MN DNR SNA

**Hyrdology**

- NWI Wetland
- PWI Wetland
- PWI Stream

- Snowmobile
- Recreational Trails
- Water Access
- Residence
- Gravel Pit



Map Document: (\\npa-gis-fila\GISProj\Overall\48496map.docx)MHOES-ElS\map\_L-1x17-Detailed\_Routes\_20100712.mxd 7/12/2010 - 12:31:37 PM



**Route Alternatives**

- Route 1
- Route 2
- Route 3
- Route 4
- Alternate Route Segment

**Route ROW Alternatives**

- Route 1
- Route 2
- Route 3
- Route 4

- Project Endpoints
- Breaker Station
- Proposed Substation

**Existing Transmission Lines**

- 69 kV
- 115 kV
- 230 kV

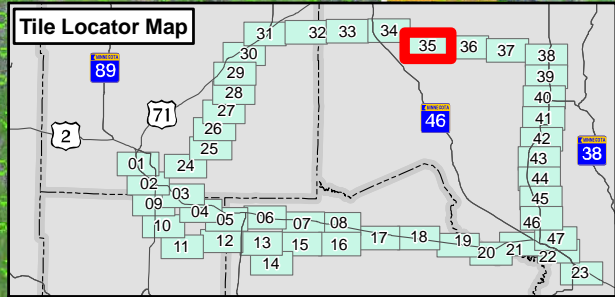
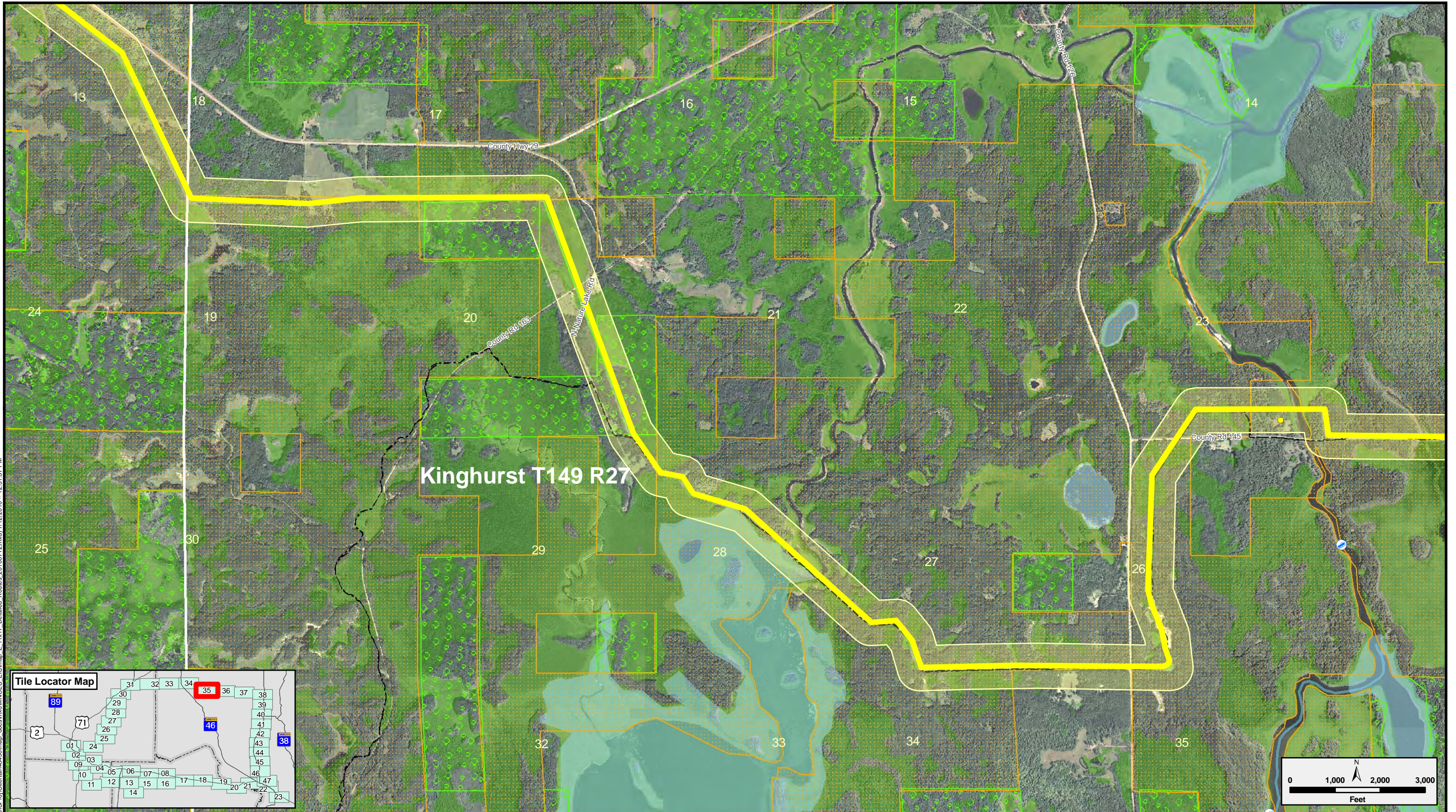
- Leech Lake Reservation
- Proposed Pipelines
- Existing Pipeline
- Communication Tower
- Existing Substation

- Natural Resource Areas**
- Wildlife Management Area
  - Chippewa National Forest
  - MN State Forest
  - MN DNR SNA

- Hyrdology**
- NWI Wetland
  - PWI Wetland
  - PWI Stream

- Snowmobile
- Recreational Trails
- Water Access
- Residence
- Gravel Pit

Map Document: (\\npa-gis-fila\GISProj\Cherrail\48496map.docx\mxd\MNOES\_EIS\map\_L\_1x177\_Detailed\_Routes\_20100712.mxd) 7/12/2010 -- 12:31:37 PM



**Route Alternatives**

- Route 1
- Route 2
- Route 3
- Route 4
- Alternate Route Segment

**Route ROW Alternatives**

- Route 1
- Route 2
- Route 3
- Route 4

**Project Endpoints**

- Breaker Station
- Proposed Substation

**Existing Transmission Lines**

- 69 kV
- 115 kV
- 230 kV

**Leach Lake Reservation**

- Proposed Pipelines
- Existing Pipeline
- Communication Tower
- Existing Substation

**Natural Resource Areas**

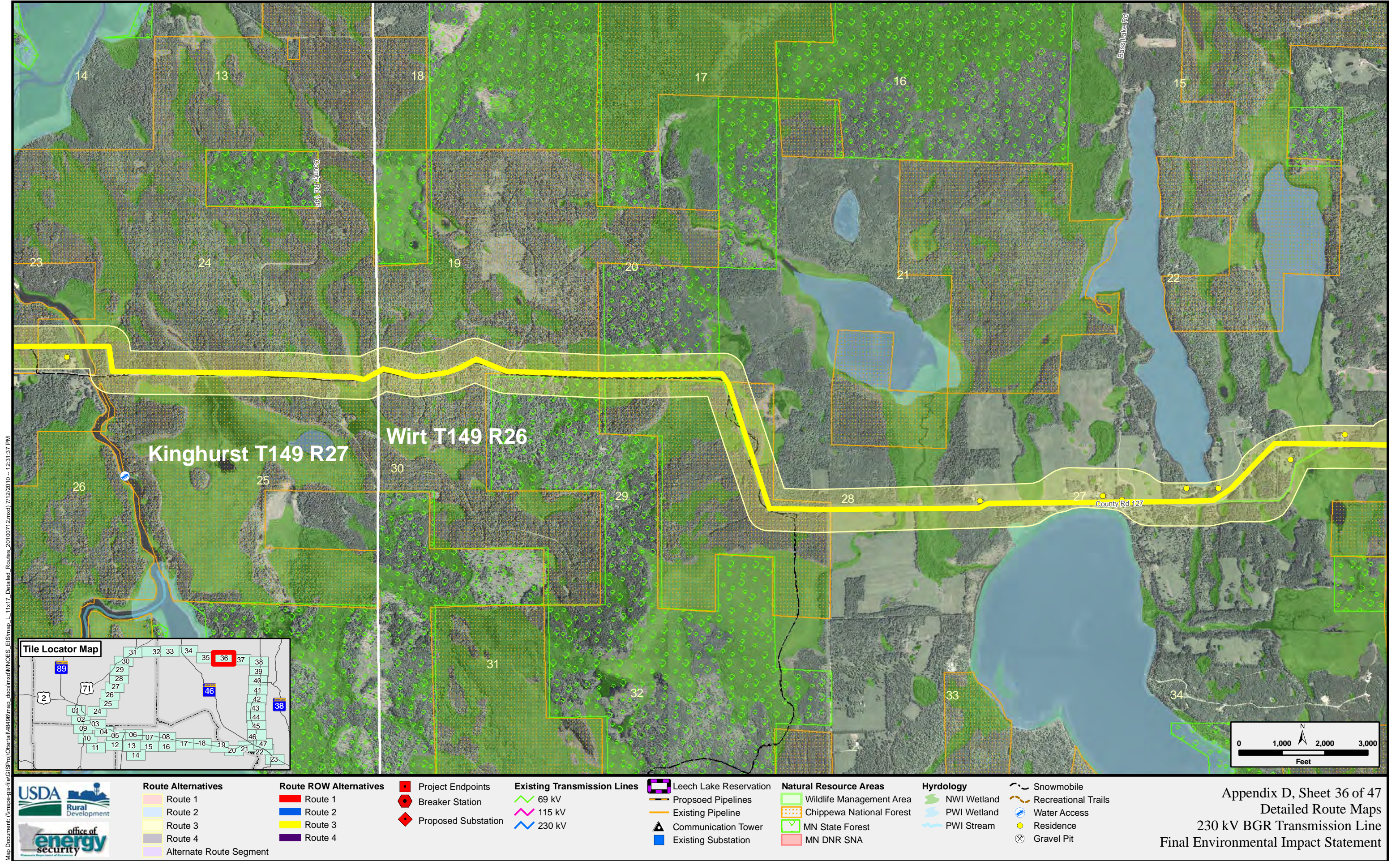
- Wildlife Management Area
- Chippewa National Forest
- MN State Forest
- MN DNR SNA

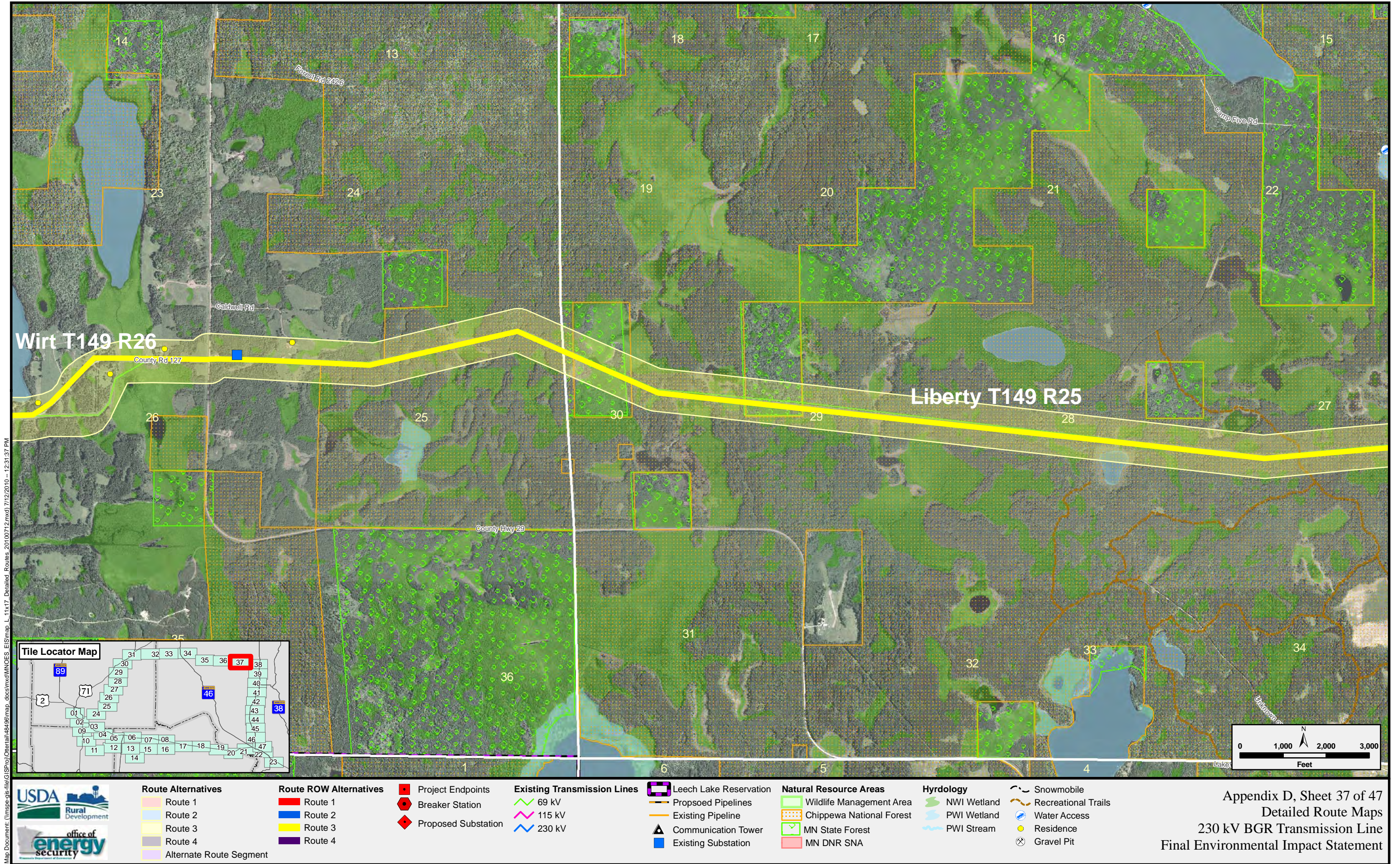
**Hyrdology**

- NWI Wetland
- PWI Wetland
- PWI Stream

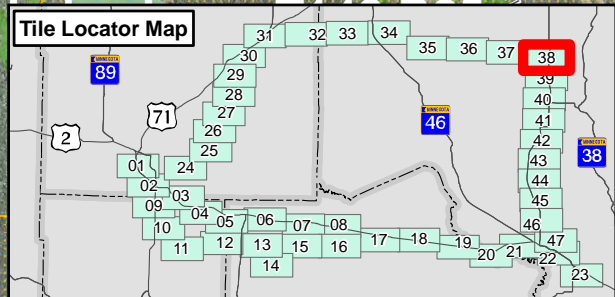
**Snowmobile**

- Recreational Trails
- Water Access
- Residence
- Gravel Pit





Map Document: \\nps-gis-fila\GIS\proj\Cherrail\48496map.docx\mxd\MOES\_EIS\map\_L\_1x17\_Detailed\_Routes\_20100712.mxd 7/12/2010 - 12:31:37 PM



**Route Alternatives**

- Route 1
- Route 2
- Route 3
- Route 4
- Alternate Route Segment

**Route ROW Alternatives**

- Route 1
- Route 2
- Route 3
- Route 4

- Project Endpoints
- Breaker Station
- Proposed Substation

**Existing Transmission Lines**

- 69 kV
- 115 kV
- 230 kV

- Leach Lake Reservation
- Proposed Pipelines
- Existing Pipeline
- Communication Tower
- Existing Substation

**Natural Resource Areas**

- Wildlife Management Area
- Chippewa National Forest
- MN State Forest
- MN DNR SNA

**Hydrology**

- NWI Wetland
- PWI Wetland
- PWI Stream

- Snowmobile
- Recreational Trails
- Water Access
- Residence
- Gravel Pit