

WELCOME

Cardinal-Hickory Creek 345-kV Transmission Line Project
Environmental Impact Statement (EIS)
Public Meeting



Committed to the future of rural communities.

Sponsored by:

**U.S. Department of Agriculture (USDA)
Rural Utilities Service (RUS)**

Cardinal-Hickory Creek 354-kV Transmission Line Project Environmental Impact Statement (EIS) Public Scoping Meetings

Scoping Period: The scoping period will close on January 6, 2017. A series of public meetings is being held throughout the project area to provide you with information and solicit your comments and input.

Draft EIS Public Comment Period: After the Draft EIS is published, you will have a 45-day opportunity to provide comments and input again.

Final EIS Comment Period: After the Final EIS is released, you have a 30-day opportunity to comment on the selected alternative.

For more information contact:
Dennis Rankin, Project Manager
USDA, Rural Utilities Service
Phone: (202) 720-1953
Email: dennis.rankin@wdc.usda.gov



Committed to the future of rural communities.

The NEPA Process

Notice of Intent Published
In the Federal Register

Public Scoping Period
(current step)

Formulation of Alternatives

Preparation of the
Draft EIS

Notice of Availability
of the Draft EIS (Fall 2017)

45-day Draft EIS
Public Comment Period

Preparation of the
Final EIS

Notice of Availability
of the Final EIS (Summer 2018)

30-day Final EIS
Public Comment Period

Record of Decision
Published

RUS review of financial and engineering
processes can proceed.

Cardinal-Hickory Creek 345-kV Transmission Line Project Environmental Impact Statement (EIS)

How to Participate

Public involvement is an essential part of the process. With public involvement and environmental analysis, the National Environmental Policy Act (NEPA) process will support the USDA RUS and other federal agencies in making informed decisions.

Three Ways to Provide Comments

1. Submit written comments at the meeting, using comment forms
2. Email your comments to: comments@CardinalHickoryCreekEIS.us
3. Mail your written comments to:

SWCA Environmental Consultants
Attn: Cardinal-Hickory Creek EIS
200 Bursca Drive
Suite 207
Bridgeville, PA 15017



Committed to the future of rural communities.

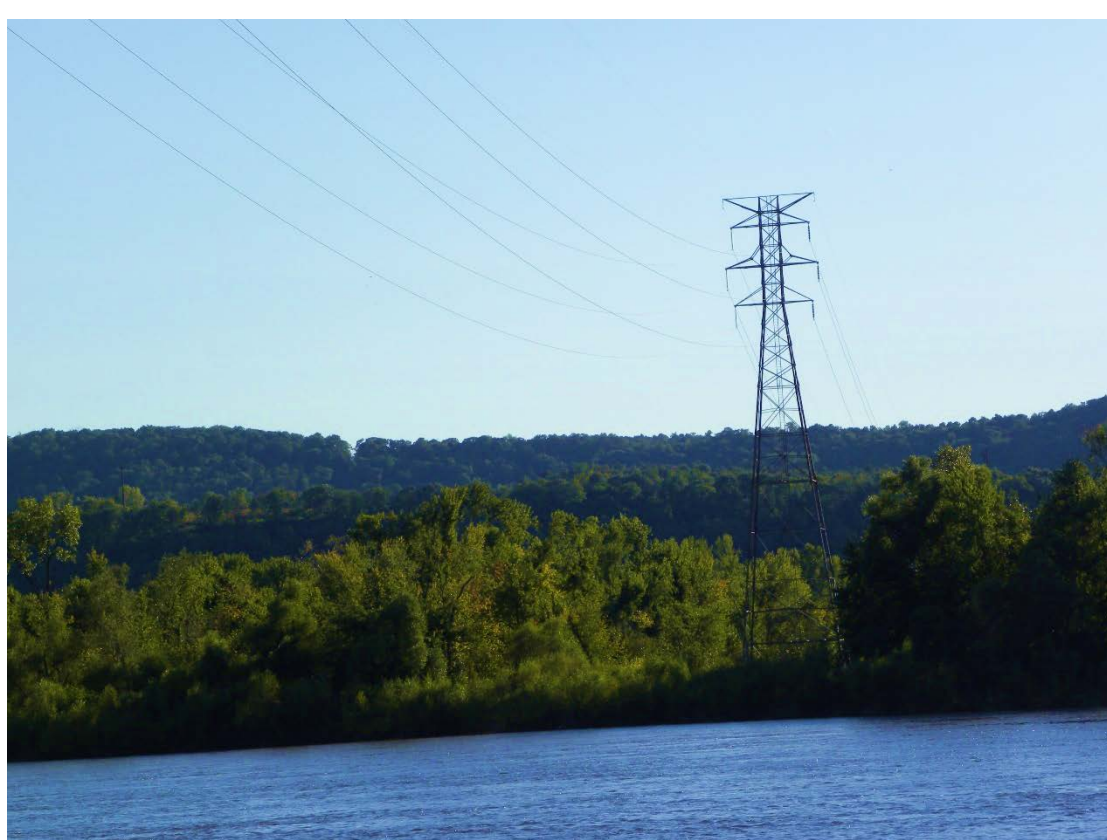
Cardinal-Hickory Creek 345-kV Transmission Line Project Environmental Impact Statement (EIS)

Preliminary Resource Issues

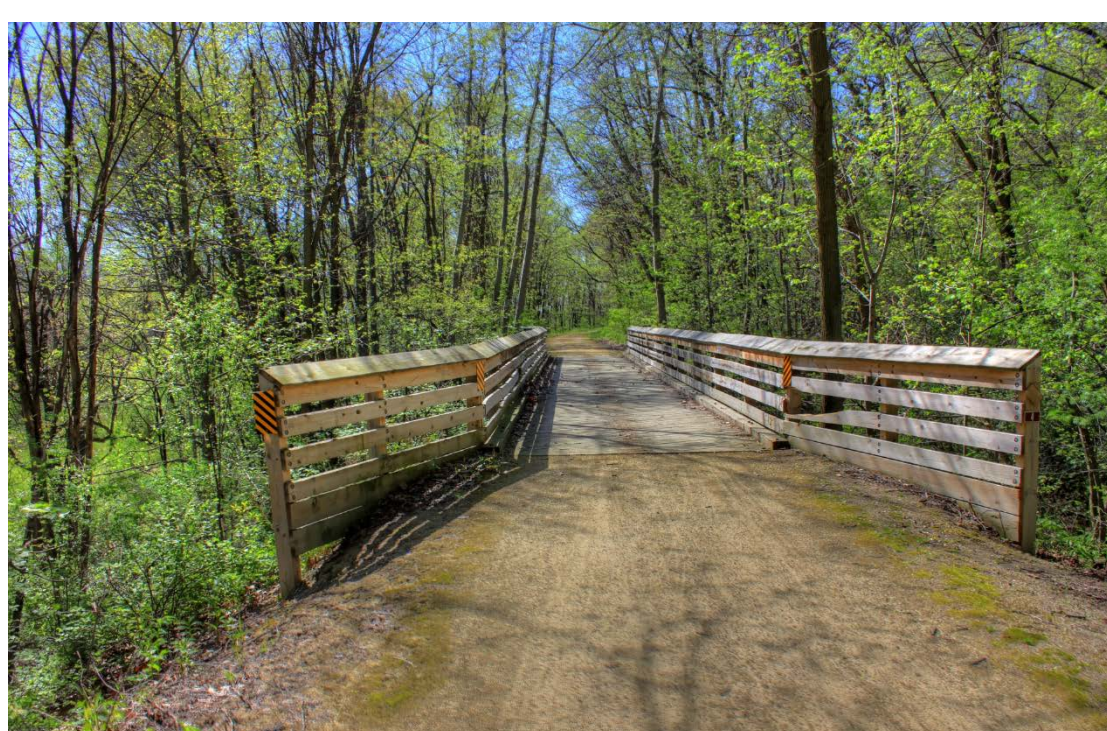
The RUS and other federal agencies will prepare an EIS to comply with NEPA. The EIS will evaluate the project's potential effects on environmental resources, such as:

- Geology and Soils
- Vegetation
- Wetlands
- Wildlife
- Special Status Species
- Surface Water and Groundwater
- Cultural and Historic Resources
- Floodplains
- Paleontology
- Air Quality
- Noise
- Land Use
- Farmland
- Transportation
- Socioeconomics
- Environmental Justice
- Visual Resources
- Health and Safety

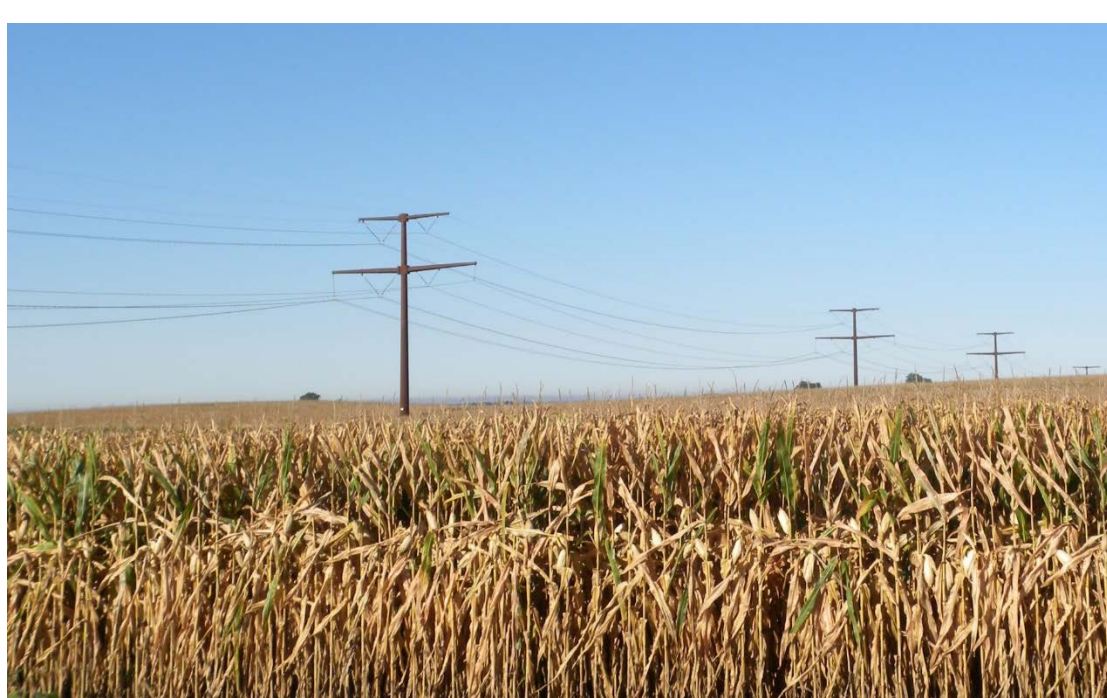
At this time, specific resource issues identified for the proposed project include:



- Crossing the Upper Mississippi River National Wildlife Refuge



- Diverse Land Uses



- Visual Resources



Committed to the future of rural communities.