

DEPARTMENT OF AGRICULTURE
Rural Development

SE Municipal Solar, LLC: Notice of Availability of an Environmental Assessment

AGENCY: Rural Utilities Service, USDA

ACTION: Notice of Availability of an Environmental Assessment

SUMMARY: Notice is hereby given that the Rural Utilities Service (RUS), as required by the National Environmental Policy Act, is issuing an environmental assessment (EA) in connection with possible impacts related to a project proposed by SE Municipal Solar, LLC (SE), of Omaha, Nebraska. The proposal is for the building of a solar energy project in Scotts Bluff County, Nebraska. SE Municipal Solar, LLC has submitted an application to the RUS for funding of the proposal.

FOR FURTHER INFORMATION CONTACT: Environmental and Historic Preservation Division, USDA Rural Development, Rural Utilities Service, 1400 Independence Ave. SW, Washington, DC 20250-1570. Questions and comments should be emailed to RUS at RUSPublicComments@usda.gov.

SUPPLEMENTARY INFORMATION: The Gering Solar will be on a 22.6-acre tract of land. It will be approximately 500 feet west of the intersection of U Street (County Road N) and Lockwood Road (County Road 23) in the City of Gering. The project will construct a solar energy generation facility which will connect to the City of Gering's electrical distribution system.

Terracon Consultants, Inc., an environmental consultant, prepared an environmental assessment for RUS that describes the project, assesses the proposed project's environmental impacts, and summarizes as applicable any mitigation measures used to minimize environmental effects. RUS has conducted an independent evaluation of the environmental assessment and believes that it accurately assesses the impacts of the proposed project. No significant impacts are expected as a result of the construction of the project.

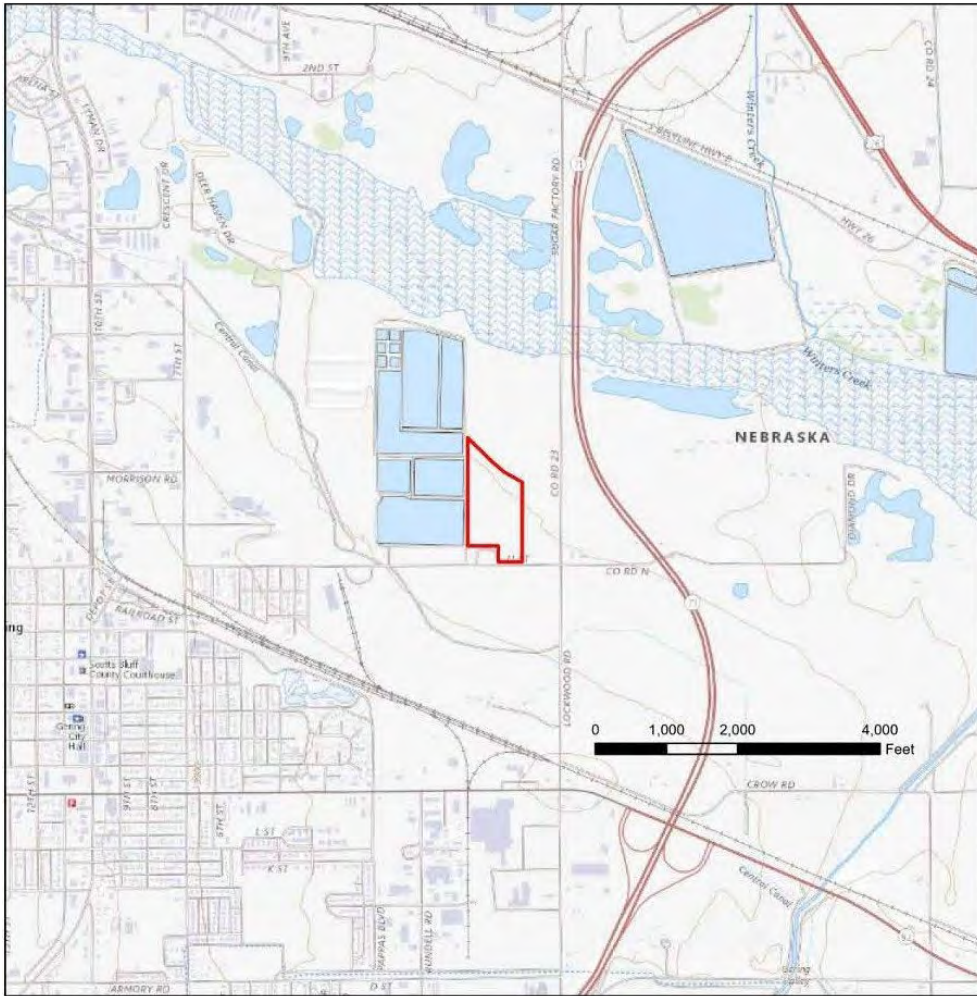
Written questions and comments should be emailed to RUS at the email address provided above. RUS will accept questions and comments on the environmental assessment for 14 days from the first date of publication of this notice. All comments must be provided electronically with no hard copy comments being accepted at this time.

Copies of the environmental assessment and supporting documentation will be available for public review at: <https://www.rd.usda.gov/resources/environmental-studies/assessment/gering-solar-project>

Any final action by RUS related to the proposed project will be subject to, and contingent upon, compliance with all relevant Federal environmental laws and regulations and completion of environmental review procedures as prescribed by 7 CFR Part 1970, Environmental Policies and Procedures.

A general location map of the proposal is shown below.

Dated: June 27, 2024



Legend



DATA SOURCES:
 ESRI WMS - World Aerial Imagery, OpenStreetMap