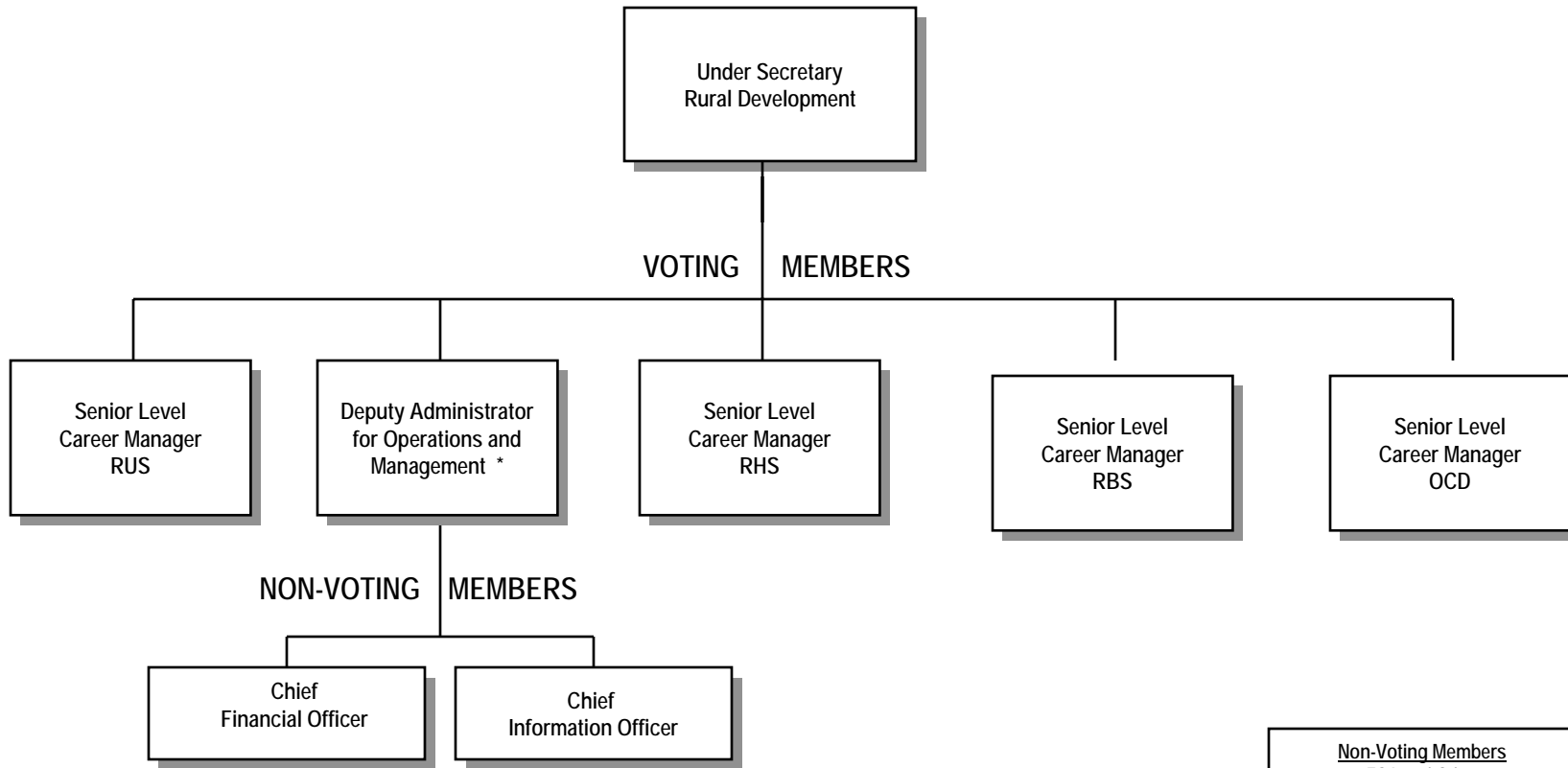


RURAL DEVELOPMENT AUTOMATION REVIEW COUNCIL (ARC)

RD Instruction 2006-FF, Exhibit B



Non-Voting Members
FSA and Other
Agency Representation

Note: The ARC Chairperson and Vice Chairperson are appointed on an annual rotating basis by the Under Secretary
*ARC - Executive Secretary